

URBAN DISTRIBUTION

DRAWING NUMBER	SHT.	DRAWING TITLE	DWG REV.	BOM REV.
A-14-00	1 – 3	GENERAL INFORMATION	G/E/F	
A-14-00	4	TRIPLEX AND QUADRUPLIX STANDARD IDENTIFICATION	A	
A-14-00	5 – 8	TYPICAL CONFIGURATIONS URBAN DISTRIBUTION	C/A/A/A	
A-14-00	9 – 12	TYPICAL CONFIGURATIONS URBAN 60M DISTRIBUTION	-/-/-	
A-14-01	1 – 2	NEUTRAL WIRE TANGENT AND DEFLECTION FOR ANGLES OF 0° TO 4°	B	B
A-14-02	1 – 2	NEUTRAL WIRE DEFLECTION FOR ANGLES OF 5° TO 59°	0	A
A-14-03	1 – 2	NEUTRAL WIRE DEFLECTION AND CORNER FOR ANGLES OF 60° TO 90°	0	0
A-14-04	1 – 2	NEUTRAL WIRE DEADEND	A	A
A-14-05	1 – 2	DUPLEX SECONDARY TANGENT	A	A
A-14-06	1 – 2	DUPLEX DEFLECTION AND CORNER FOR ANGLES OF 60° TO 90°	0	0
A-14-07	1 – 2	DUPLEX SECONDARY DEADEND	0	0
A-14-08	1 – 2	TRIPLEX AND QUADRUPLIX SECONDARY TANGENT	A	A
A-14-09	1 – 2	DUPLEX, TRIPLEX, AND QUADRUPLIX DEFLECTION FOR ANGLES OF 10° TO 59°	A	A
A-14-10	1 – 2	TRIPLEX AND QUADRUPLIX DEFLECTION AND CORNER FOR ANGLES OF 60° TO 90°	0	0
A-14-11	1 – 2	TRIPLEX AND QUADRUPLIX SECONDARY DEADEND	0	0
A-14-12	1 – 2	TRIPLEX AND QUADRUPLIX SECONDARY CUT FOR NEW CONSTRUCTION	A	A
A-14-13	1 – 2	TRIPLEX AND QUADRUPLIX SLACKSPAN	A	B
A-14-150	1 – 2	3Ø TANGENT DEFLECTIONS UP TO 2 DEGREES TULIP AAC	-	0
A-14-151	1 – 2	3Ø LIGHT ANGLE DEFLECTIONS OF 3 TO 10 DEGREES TULIP AAC	-	0
A-14-152	1 – 2	3Ø MEDIUM ANGLE DEFLECTIONS OF 11 TO 30 DEGREES TULIP AAC	-	0
A-14-153	1 – 2	3Ø HEAVY ANGLE/CORNERS DEFLECTIONS OF 31 TO 90 DEGREES TULIP AAC	-	0
A-14-154	1 – 2	3Ø DEAD END TULIP AAC	-	0
A-14-155	1 – 2	3Ø TAP OFF TULIP AAC	-	0
A-14-160	1 – 2	DOUBLE CIRCUIT 3Ø TANGENT DEFLECTIONS UP TO 2 DEGREES TULIP AAC	-	0
A-14-161	1 – 2	DOUBLE CIRCUIT 3Ø LIGHT ANGLE DEFLECTIONS OF 3 TO 10 DEGREES TULIP AAC	-	0
A-14-162	1 – 2	DOUBLE CIRCUIT 3Ø MEDIUM ANGLE DEFLECTIONS OF 11 TO 30 DEGREES TULIP AAC	-	0
A-14-163	1 – 2	DOUBLE CIRCUIT 3Ø HEAVY ANGLE/CORNERS DEFLECTIONS OF 31 TO 90 DEGREES TULIP AAC	-	0
A-14-164	1 – 2	DOUBLE CIRCUIT 3Ø DEAD END TULIP AAC	-	0
A-14-165	1 – 2	DOUBLE CIRCUIT 3Ø TAP OFF TULIP AAC	-	0

SaskPower - DISTRIBUTION STANDARDS

APPROVAL	DESIGN CHK	DRN. LM	INDEX
L MOEN	P PATEL	CHKD. PP	
		2021-08-13	
DATE OF ISSUE: 2022-01-10		DRAWING NO: A-14-INDEX	SHEET 1 OF 1
			REV. T

URBAN DISTRIBUTION

1. STRUCTURES FOR URBAN PRIMARY ARE THE SAME AS THOSE USED FOR RURAL PRIMARY (A-12 SECTION) WITH THE FOLLOWING CHANGES:

1.1 THREE PHASE TANGENT AND ANGLE STRUCTURES CAN BE USED FOR URBAN CONDUCTOR SIZES AS PER A-14-00 SHEET 3, UNDER THE FOLLOWING CONDITIONS:

DRAWING NUMBER	DEFLECTION LIMITS	CONDUCTOR	RULING SPAN
A-12-51	0 – 2°	UP TO 266.8 KCMIL AL (DAISY)	60m OR LESS
A-12-51	0 – 2°	477 KCMIL AL (COSMOS)	38m OR LESS
A-12-52	0 – 2°	266.8 KCMIL AL (DAISY) AND 477 KCMIL AL (COSMOS)	60m OR LESS
A-12-55	2 – 10°	266.8 KCMIL AL (DAISY) AND 477 KCMIL AL (COSMOS)	60m OR LESS

1.2 VERIFY SUITABILITY OF STRUCTURE FOR ALL CONDUCTORS NOT LISTED IN A-14-00 SHT 3.

2. MINIMUM POLE SIZE FOR URBAN CONSTRUCTION WILL BE A 13.7m (45') CLASS 4 FOR SINGLE PHASE AND SERVICE POLES. STRUCTURES MAY REQUIRE A BETTER CLASS POLE, DEPENDING ON TYPE OF STRUCTURE, CONDUCTOR AND TRANSFORMER WEIGHT. SEE STRUCTURE PAGE, SECTION A-08 AND SECTION A-32.
3. STANDARD RULING SPANS FOR URBAN CONSTRUCTION WILL BE 38 METRE AND 60 METRE. 38 METRE RULING SPANS WILL GENERALLY APPLY IN RESIDENTIAL AREAS WITH OVERHEAD SECONDARY, AND 60 METRE RULING SPANS WILL GENERALLY APPLY IN INDUSTRIAL AREAS WITHOUT OVERHEAD SECONDARY.
4. CROSSARMS IN URBAN CONSTRUCTION DO NOT ALTERNATE FROM SIDE TO SIDE OF POLE. THE CENTRE PHASE WIRE IS NOT STAGGERED.
5. ALL DEADEND, ANGLE, OR CORNER STRUCTURES ARE TO BE RAKED 300mm AT THE TOP (UNLESS STATED OTHERWISE).
6. JAM NUTS ARE TO BE USED WITH EYENUTS IF THE EYENUT CANNOT BE INSTALLED TIGHT AGAINST THE POLE.
7. THROUGH BOLTS ARE TO BE INSTALLED WITH THE NUT ON THE POLE SIDE.
8. FLAT CROSSARM BRACES ARE TO BE INSTALLED ON THE INSIDE OF THE CROSSARM.
9. AUTOMATIC SPLICING SLEEVES ARE NOT TO BE USED ON SLACKSPAN CONDUCTORS OR SMOOTH BODY CONDUCTORS.

BACK TO INDEX PAGE

SaskPower - DISTRIBUTION STANDARDS

APPROVAL L MOEN	DESIGN CHK P PATEL	DRN. PP CHKD. LM 2021-05-12	GENERAL INFORMATION
DATE OF ISSUE: 2021-08-16		DRAWING NO: A-14-00	SHEET 1 of 12 REV. G

10. DOUBLE COIL LOCKWASHERS ARE USED TO HELP KEEP HARDWARE TIGHT. THEY ARE USED ON ALL POLE TOP BOLTS, OTHER THAN THOSE UNDER TENSION (EG: THOSE HOLDING DEADEND INSULATORS). TIGHTEN NUT NORMALLY THEN 'BACK OFF' 1/4 TURN. IF WASHERS ARE COMPLETELY FLAT THEY CANNOT DO THEIR JOB. THEY ARE ALSO USED TO MOUNT APPARTUS AND INSULATOR PINS.

11. USE OF POLYMER DEADEND INSULATORS:
THESE INSULATORS ARE RUGGED AND LESS PRONE TO DAMAGE THAN PORCELAIN UNITS. THEY SHOULD STILL BE TREATED CAREFULLY LIKE ANY OTHER HIGH VOLTAGE APPARATUS.

ALTHOUGH THEY HAVE HIGH TENSILE STRENGTH, THEY DO NOT HAVE GOOD TORSIONAL STRENGTH (ONE END FIXED AND THE OTHER END TWISTED). NOR DO THEY HAVE GOOD CANTILEVER STRENGTH (ONE END FIXED AND THE OTHER BENT). THIS SHOULD BE KEPT IN MIND DURING INSTALLATION.

ON DEADEND AND DEFLECTION STRUCTURES KEEP THE EYES OF BOLTS AND NUTS VERTICAL. THIS ALLOWS MOVEMENT OF THE INSULATOR WITHOUT CAUSING A CANTILEVER LOAD.

THESE INSULATORS PERFORM VERY WELL IN CONTAMINATED ENVIRONMENTS. DO NOT APPLY ANY SILCON GREASES TO THEM SINCE THE CHEMICAL COMPATABILITIES ARE NOT KNOWN. PRESSURIZED WATER WASHING CAN BE USED IF REQUIRED.

12. SYSTEM NEUTRALS TO BE 1/0 ACSR. A SEPARATE NEUTRAL IS NOT NECESSARY IF THE NEUTRAL OF THE SECONDARY IS 1/0 OR LARGER. IN TOWNS WHERE A MAXIMUM LINE TO GROUND FAULT OF 6200 AMPS WOULD BE CLEARED IN 0.8 SECONDS, A #2 ACSR NEUTRAL MAY BE USED (SEPARATE OR PART OF SECONDARY). FOR FAULTS UP TO 10,000 AMPS CLEARED IN 0.8 SECONDS (13,000 AMPS CLEARED IN 0.5 SECONDS), USE 1/0 ACSR NEUTRAL. FOR GROUNDING OF THE NEUTRAL SEE GROUNDING SECTION A-33. ALL NEUTRALS AND GROUNDS TO BE BONDED.

13. ALL NEW CONSTRUCTION FOR 4.16/2.4 kV SYSTEMS AND 14.4 kV 3Ø SYSTEMS ARE TO BE FRAMED TO THE STANDARDS IN THIS SECTION AND SECTION A-08, A-12, A-26, AND A-32. THIS WILL ALLOW A MINIMUM OF FUTURE COST IF THE VOLTAGE IS UPGRADED TO A 25/14.4 kV SYSTEM.

14. THE STANDARD PRIMARY CONDUCTOR FOR NEW URBAN CONSTRUCTION IS TULIP.

15. WHERE THERE ARE DIFFERENT SIZED CONDUCTORS ON THE SAME STRUCTURE, THE CONDUCTORS SHALL BE SAGGED INDIVIDUALLY AS PER THE APPROPRIATE TABLE IN SECTION C-24-05.

16. ALL PRIMARY, RURAL, VEHICULAR ROAD CROSSINGS (ROAD ALLOWANCE) SHALL BE OVERHEAD CONSTRUCTION WHERE POSSIBLE, WITH EXCEPTIONS NOTED BELOW:

- A) DESIGNATED HIGH LOAD CORRIDORS.
- B) TO PREVENT CREATING A DOCUMENTED SAFETY HAZARD TO SASKPOWER AND CUSTOMER OPERATIONS.
- C) OTHERWISE TECHNICALLY UNFEASIBLE TO CONSTRUCT OVERHEAD.

17. REFER TO DISTRIBUTION ENGINEERING DESIGN AIDS (SEP'S, DISTRIBUTION PLANNING GUIDELINES) FOR GUIDANCE ON DESIGNING OVERHEAD AND CROSSING FACILITIES.

SaskPower - DISTRIBUTION STANDARDS

APPROVAL L MOEN	DESIGN CHK P PATEL	DRN. PP CHKD. LM 2021-08-13	GENERAL INFORMATION
DATE OF ISSUE: 2022-01-10		DRAWING NO: A-14-00	SHEET 2 of 12 REV. E

CONDUCTOR	INSULATOR TIE (PRIMARY)	DEADEND (FULL TENSION)	DEADEND (PREFORMED SLACKSPAN)	RUNNING CORNER CLAMP	BAIL CLAMP WITH EYE NUTS
1/0 ACSR 2 78 10	UNI-TIE 2 97 50 SUPER TOP 2 97 66 DOUBLE SPT 2 97 92	2 01 75	5 13 10	2 02 32	2 02 82 OR 2 02 83
3/0 ACSR 2 78 30	UNI-TIE 2 97 50 SUPER TOP 2 97 68 DOUBLE SPT 2 97 94	2 01 78	5 13 20	2 02 29 AND 1 32 01	2 02 83
266.8 KCMIL ALUMINUM 2 74 51	UNI-TIE 2 97 50 SUPER TOP 2 97 72 DOUBLE SPT 2 97 98	2 02 17	5 13 50	2 02 31 AND 1 32 01	2 02 83
336.4 KCMIL ALUMINUM 2 74 70	UNI-TIE 2 97 50	2 02 18	5 13 70	2 02 31 AND 1 32 01	2 02 83
477 KCMIL ALUMINUM 2 74 80	UNI-TIE 2 97 50	2 02 18	5 13 80	2 02 34 AND 1 32 01	2 02 83

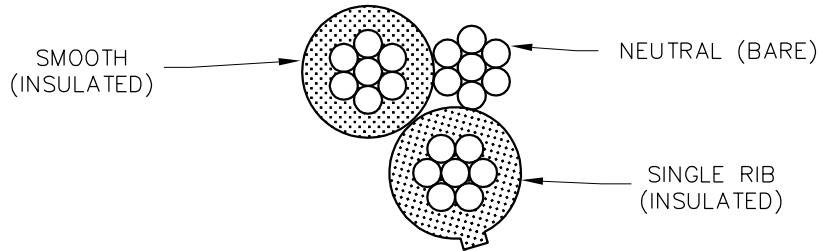
INSULATOR TIE FOR 1/0 ACSR NEUTRAL 2 97 04 ALUMINUM TIE WIRE

CONDUCTOR	DEADEND
3 X 1/0 TRIPLEX 5 38 17	5 12 82
4 X 1/0 QUADRUPLX 5 40 17	5 12 82
3 X 3/0 TRIPLEX 5 38 20	5 12 75
4 X 3/0 QUADRUPLX 300V: 5 40 18 600V: 5 40 19	5 12 75

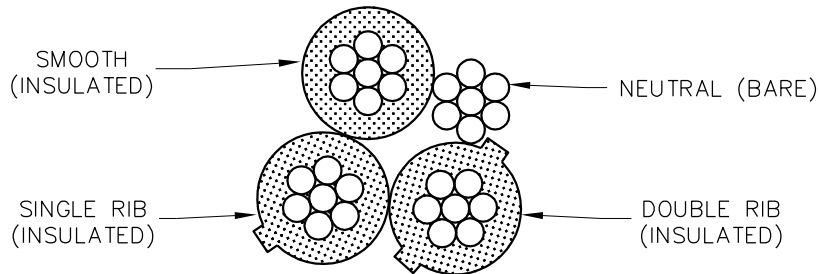
NOTE:
REFER TO SECTION A-36 FOR ADDITIONAL SPLICES AND CONNECTORS.

SaskPower - DISTRIBUTION STANDARDS				
APPROVAL	DESIGN CHK	DRN. PP	GENERAL INFORMATION	
L MOEN	P PATEL	CHKD. LM		
		2021-05-12		
DATE OF ISSUE: 2021-08-16		DRAWING NO: A-14-00		SHEET 3 of 12
				REV. F

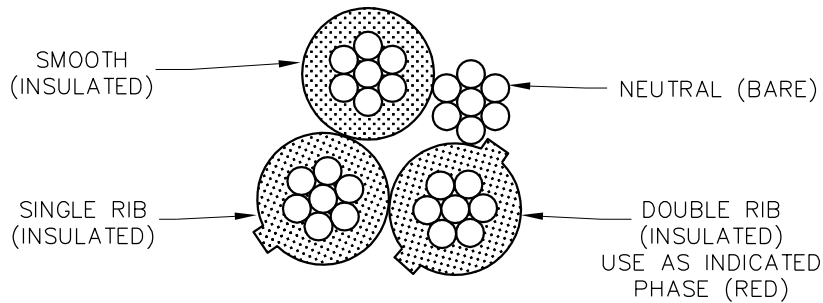
STANDARD IDENTIFICATION OF TRIPLEX
AND QUADRUPLEX SECONDARY



TRIPLEX
(CODE 5-38-XX)



QUADRUPLEX
(CODE 5-40-XX)



QUADRUPLEX USED
FOR 240 VOLT THREE
PHASE 4 WIRE SERVICES

NOTES:

FOR COLOR CODED SECONDARY QUADRUPLEX (CODE 5-40-19), THE FOLLOWING CORRELATION SHALL EXIST:

- SMOOTH JACKET ----- BLACK COLOR
- SINGLE RIB JACKET ----- BLUE COLOR
- DOUBLE RIB JACKET ----- RED COLOR --(RED PHASE)
- BARE - NEUTRAL ----- BARE - NEUTRAL

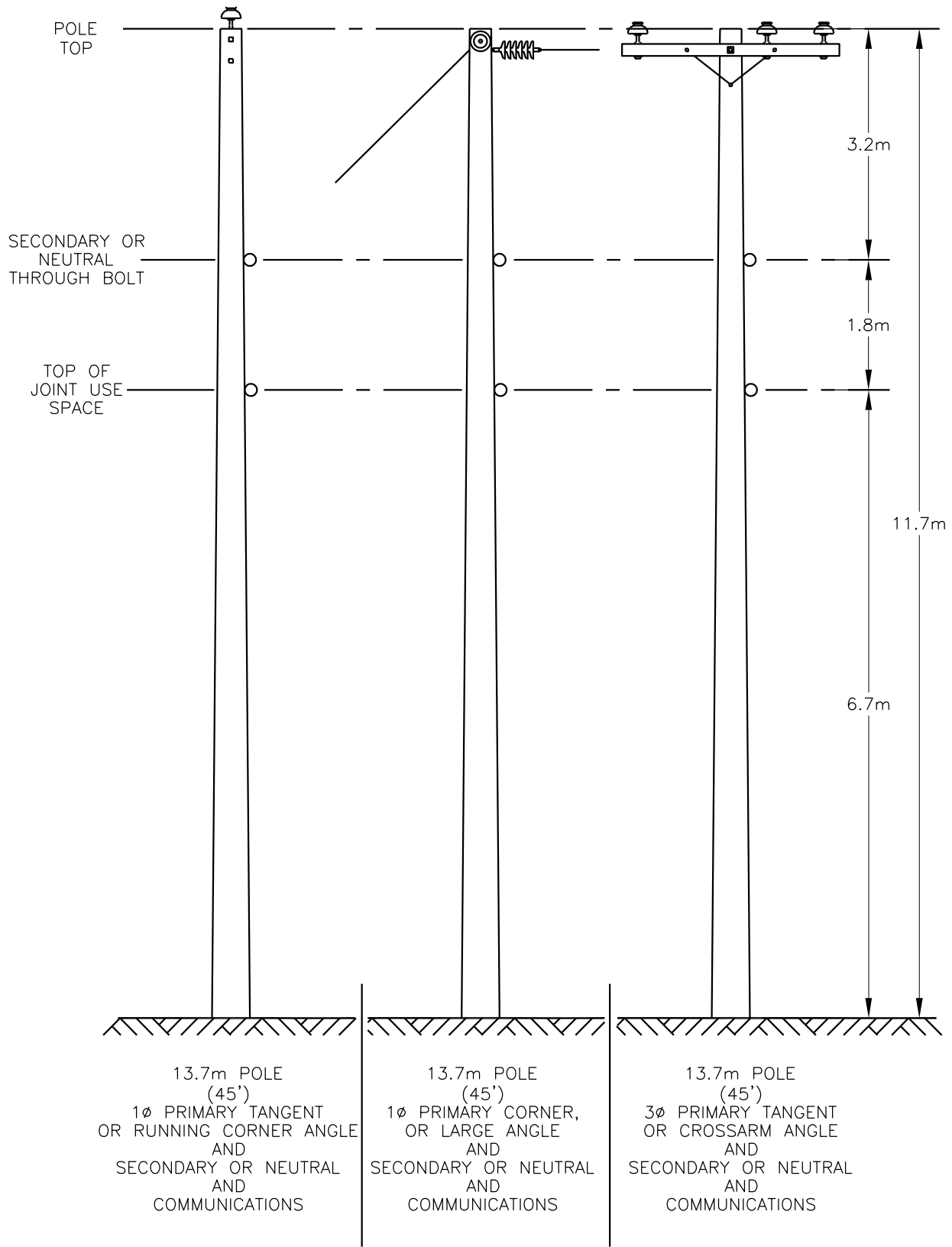
CAUTION: SINCE EXISTING TRIPLEX AND QUADRUPLEX IDENTIFICATION MAY NOT BE CONSISTENT THROUGHOUT THE SYSTEM, VOLTMETER READINGS SHOULD ALWAYS BE TAKEN TO ENSURE CORRECT SERVICE VOLTAGES.

SCALE: N.T.S.

SaskPower – DISTRIBUTION STANDARDS

APPROVAL L.MOEN	DESIGN CHK. B.GEBHART	DRN.D.REDEKOPP CHKD. 2020-10-15	TRIPLEX AND QUADRUPLEX STANDARD IDENTIFICATION
DATE OF ISSUE 2021-08-16		DRAWING NO. A-14-00	
		SHEET 4 of 12	REV. A

BACK TO INDEX PAGE

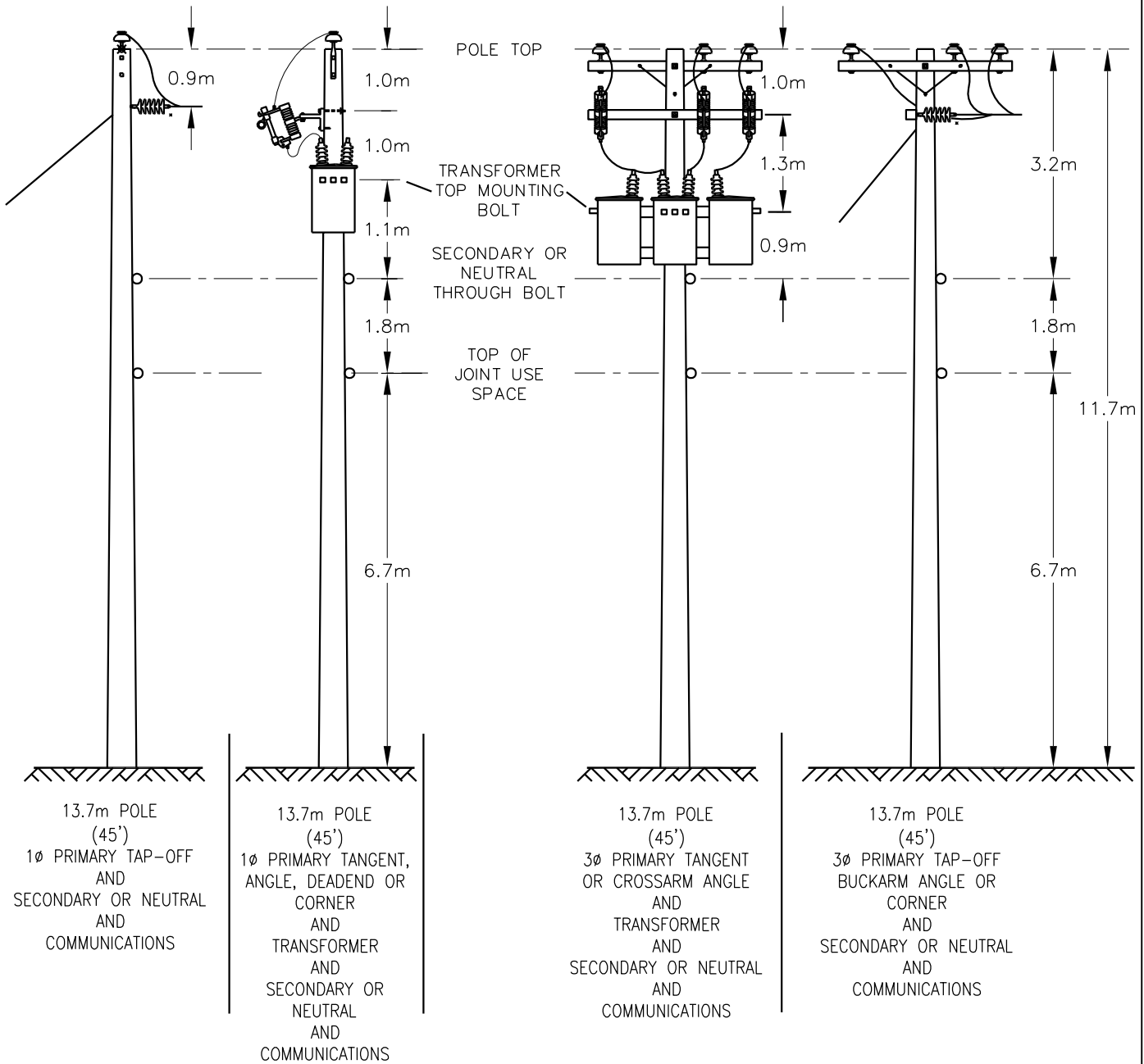


NOTES:

1. MAXIMUM SPAN LENGTH = 46 METRES.
2. POLE LENGTHS APPLIES TO NEW CONSTRUCTION ONLY. SHORTER POLES MAY BE USED FOR MAINTENANCE.
3. ALL DIMENSIONS ARE IN MILLIMETERS UNLESS OTHERWISE INDICATED.

SCALE: N.T.S.

SaskPower – DISTRIBUTION STANDARDS				
APPROVAL L.MOEN	DESIGN CHK. L.MOEN	DRN.D.REDEKOPP CHKD.	TYPICAL CONFIGURATIONS URBAN DISTRIBUTION	
		2021-03-25		
DATE OF ISSUE	2021-08-16	DRAWING NO. A-14-00	SHEET 5 of 12	REV. C



NOTES:

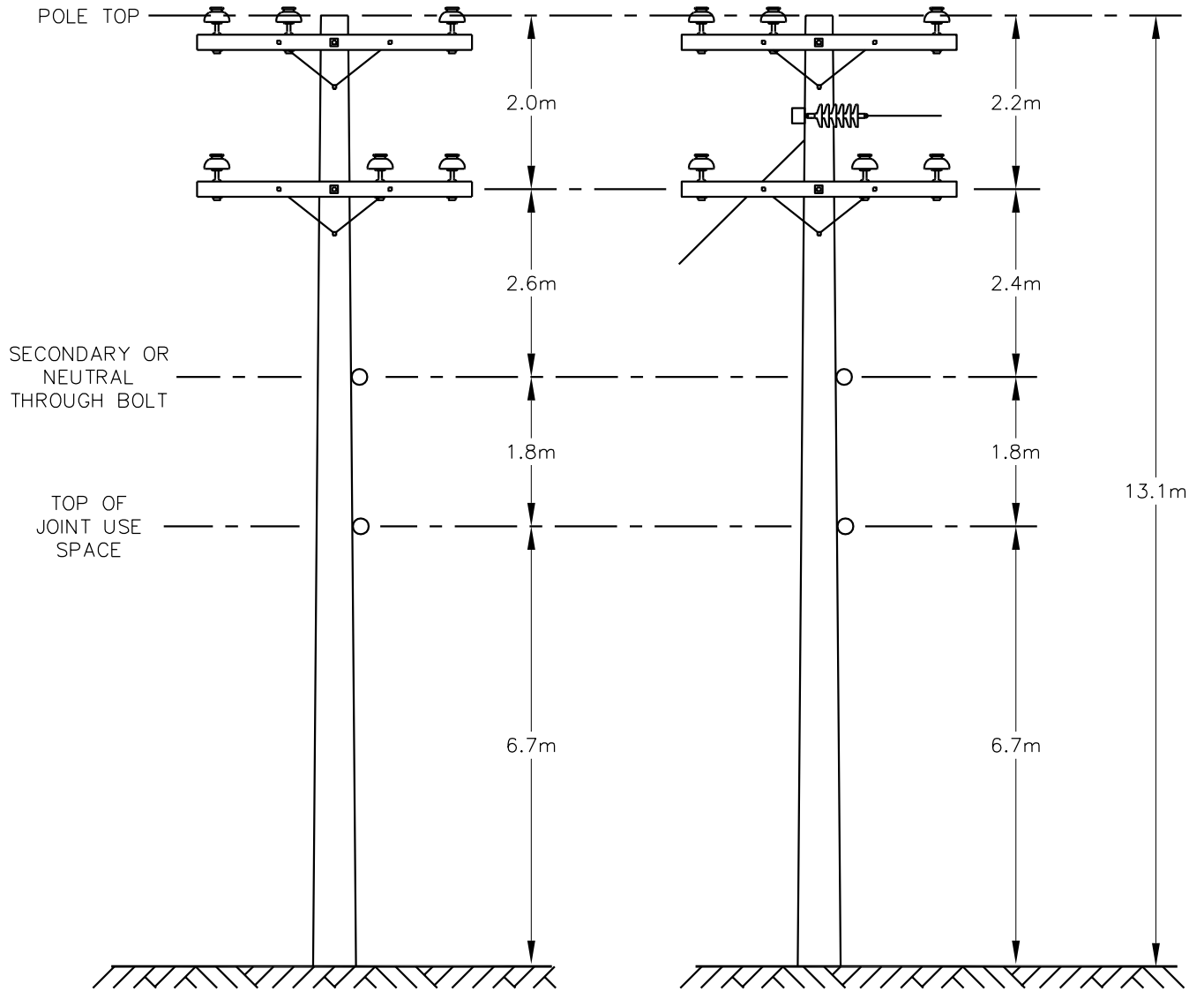
1. MAXIMUM SPAN LENGTH = 46 METERS.
2. ALL DIMENSIONS ARE IN MILLIMETERS UNLESS OTHERWISE INDICATED.

SCALE: N.T.S.

SaskPower – DISTRIBUTION STANDARDS

APPROVAL L.MOEN	DESIGN CHK. B.GEBHART	DRN.D.REDEKOPP CHKD. 2020-10-15	TYPICAL CONFIGURATIONS URBAN DISTRIBUTION	
DATE OF ISSUE	2021-08-16	DRAWING NO. A-14-00		
			SHEET 6 of 12	REV. A

BACK TO INDEX PAGE



15.2m POLE
(50')
3Ø PRIMARY CIRCUIT TANGENT
OR CROSSARM ANGLE
AND
SECONDARY OR NEUTRAL
AND
COMMUNICATIONS

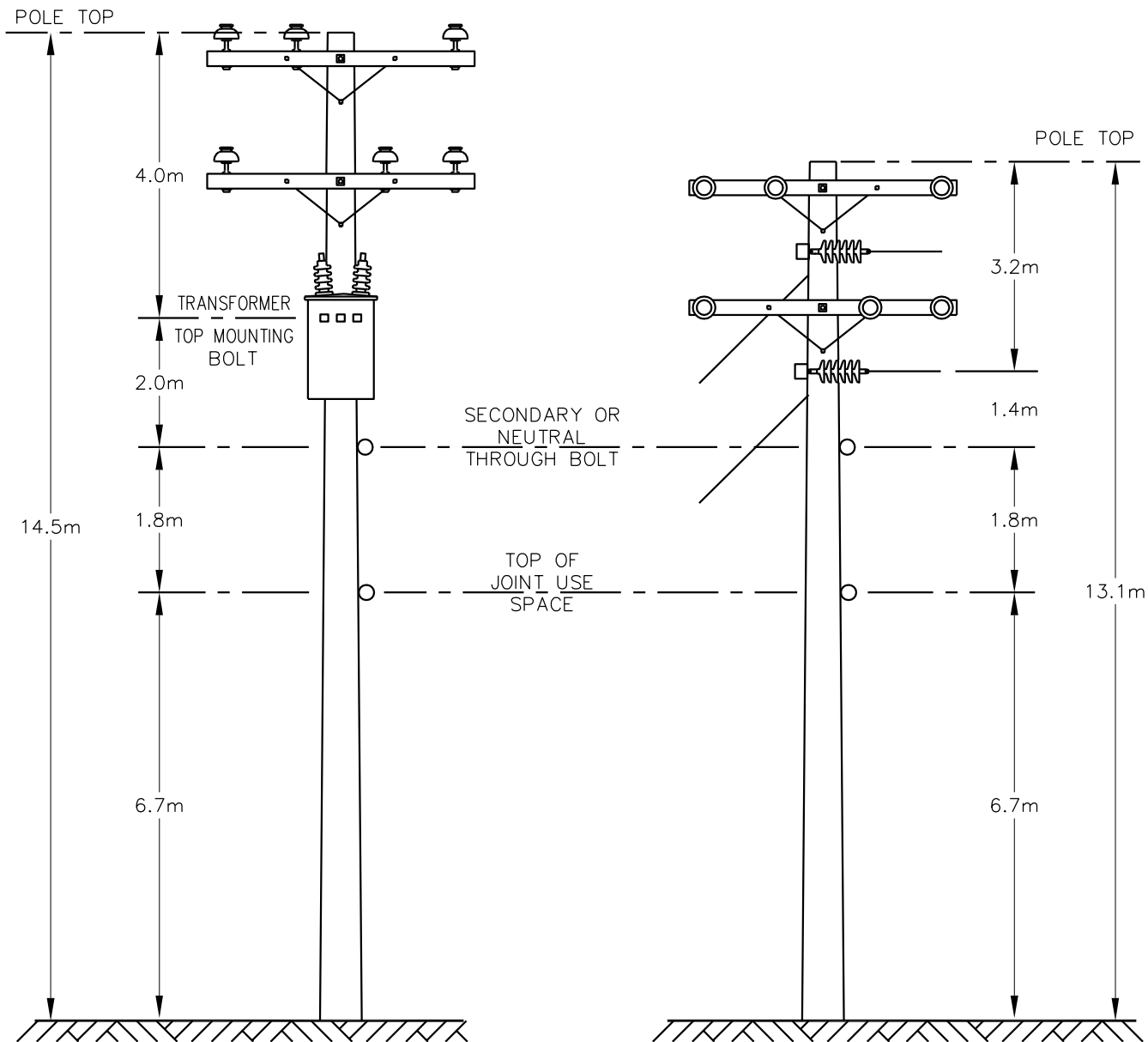
15.2m POLE
(50')
3Ø TAP-OFF FROM
DOUBLE CIRCUIT
AND
SECONDARY OR NEUTRAL
AND
COMMUNICATIONS

NOTES:

1. MAXIMUM SPAN LENGTH = 46 METERS.
2. ALL DIMENSIONS ARE IN MILLIMETERS UNLESS OTHERWISE INDICATED.

SCALE: N.T.S.

SaskPower – DISTRIBUTION STANDARDS					
APPROVAL	DESIGN CHK.	DRN.D.REDEKOPP	TYPICAL CONFIGURATIONS URBAN DISTRIBUTION		
L.MOEN	B.GEBHART	CHKD.			
		2020-10-15			
DATE OF ISSUE	2021-08-16	DRAWING NO.	A-14-00	SHEET 7 of 12	REV. A



16.8m POLE
(55')
3Ø DOUBLE CIRCUIT TANGENT
OR CROSSARM ANGLE
AND
TRANSFORMER
AND
SECONDARY OR NEUTRAL
AND
COMMUNICATIONS

15.2m POLE
(50')
3Ø DOUBLE CIRCUIT
BUCKARM ANGLE OR CORNER
AND
SECONDARY OR NEUTRAL
AND
COMMUNICATIONS

NOTES:

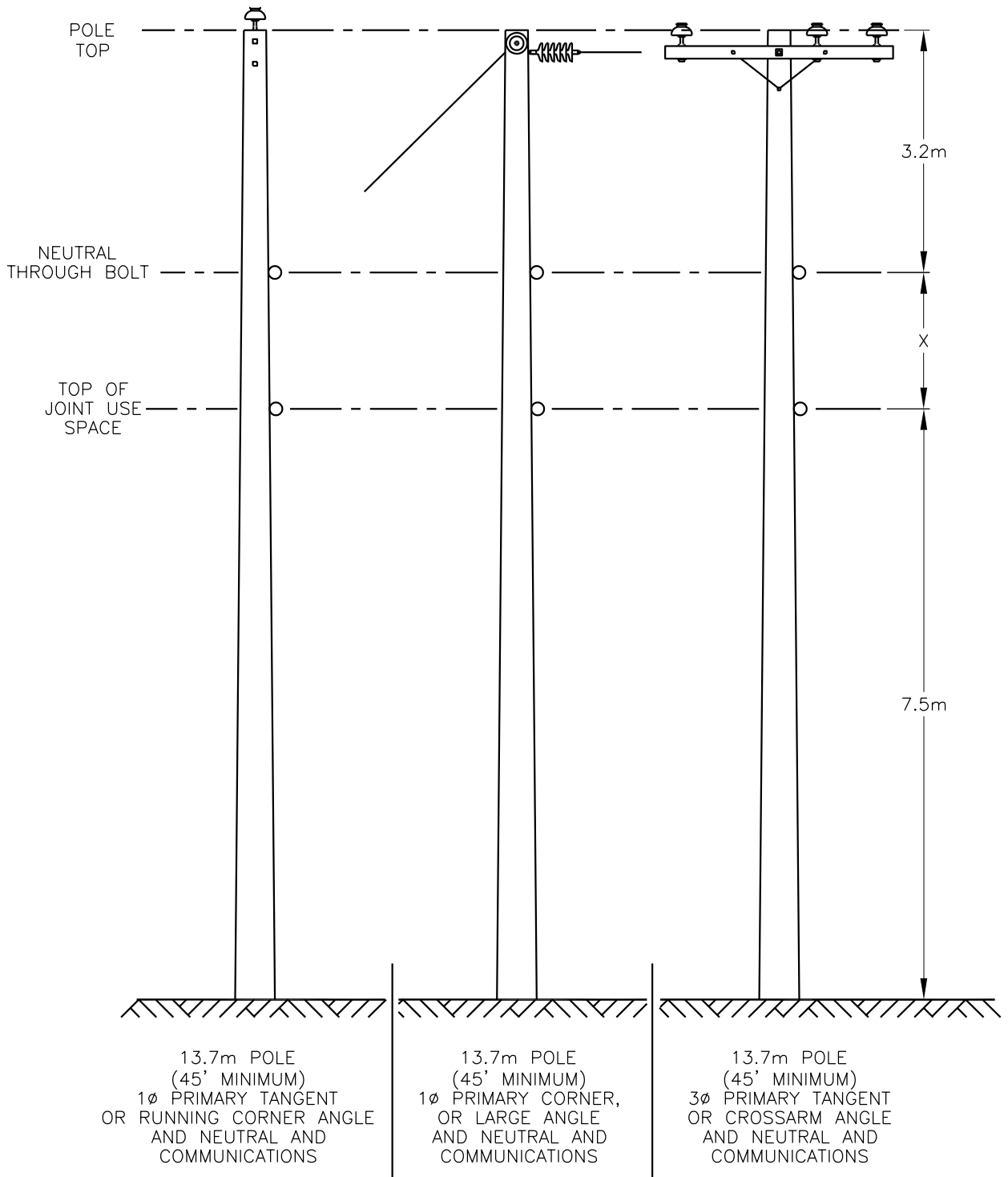
1. MAXIMUM SPAN LENGTH = 46 METERS.
2. ALL DIMENSIONS ARE IN MILLIMETERS UNLESS OTHERWISE INDICATED.

SCALE: N.T.S.

SaskPower – DISTRIBUTION STANDARDS

APPROVAL L.MOEN	DESIGN CHK. B.GEBHART	DRN.D.REDEKOPP CHKD. 2020-10-15	TYPICAL CONFIGURATIONS URBAN DISTRIBUTION
DATE OF ISSUE	2021-08-16	DRAWING NO. A-14-00	
		SHEET 8 of 12	REV. A

BACK TO INDEX PAGE



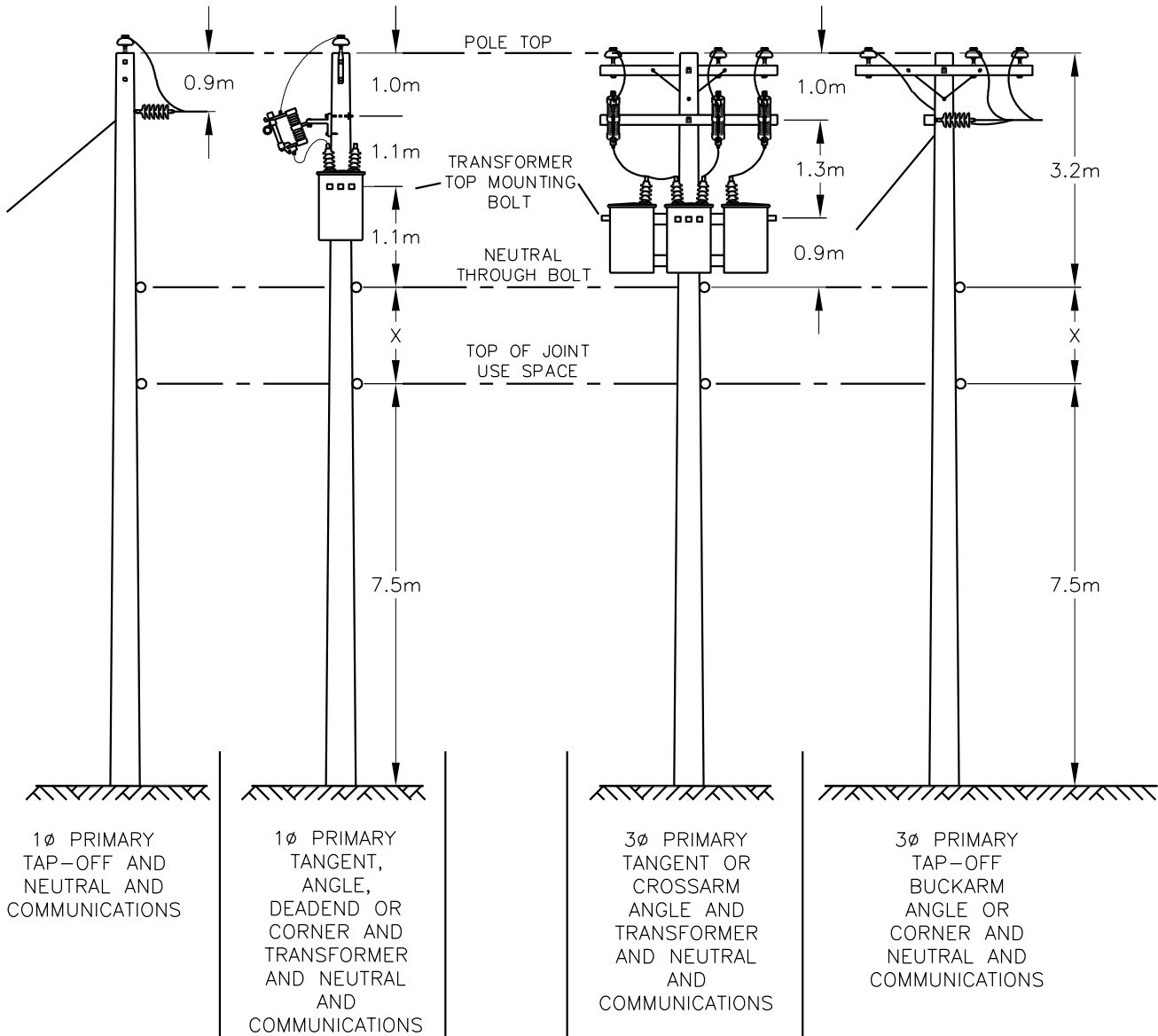
SPAN (m)	UNDER 57	57 TO 60	61 TO 64	65 TO 68	69 TO 72
X (m)	1.8	1.95	2.2	2.4	2.7
POLE LENGTH	13.7m (45')	13.7M (45')	13.7M (45')	15.2m (50')	15.2m (50')

NOTES:

1. MAXIMUM SPAN LENGTH = 72 METRES.
2. SECONDARY CONDUCTORS NOT TO BE USED ON 60M RULING SPANS.
3. ALL DIMENSIONS ARE IN MILLIMETERS UNLESS OTHERWISE INDICATED.

SCALE: N.T.S.

SaskPower – DISTRIBUTION STANDARDS				
APPROVAL L.MOEN	DESIGN CHK. L.MOEN	DRN.D.REDEKOPP CHKD. 2021-07-06	TYPICAL CONFIGURATIONS URBAN 60M DISTRIBUTION	
DATE OF ISSUE	2021-08-16	DRAWING NO. A-14-00	SHEET 9 of 12	REV. -



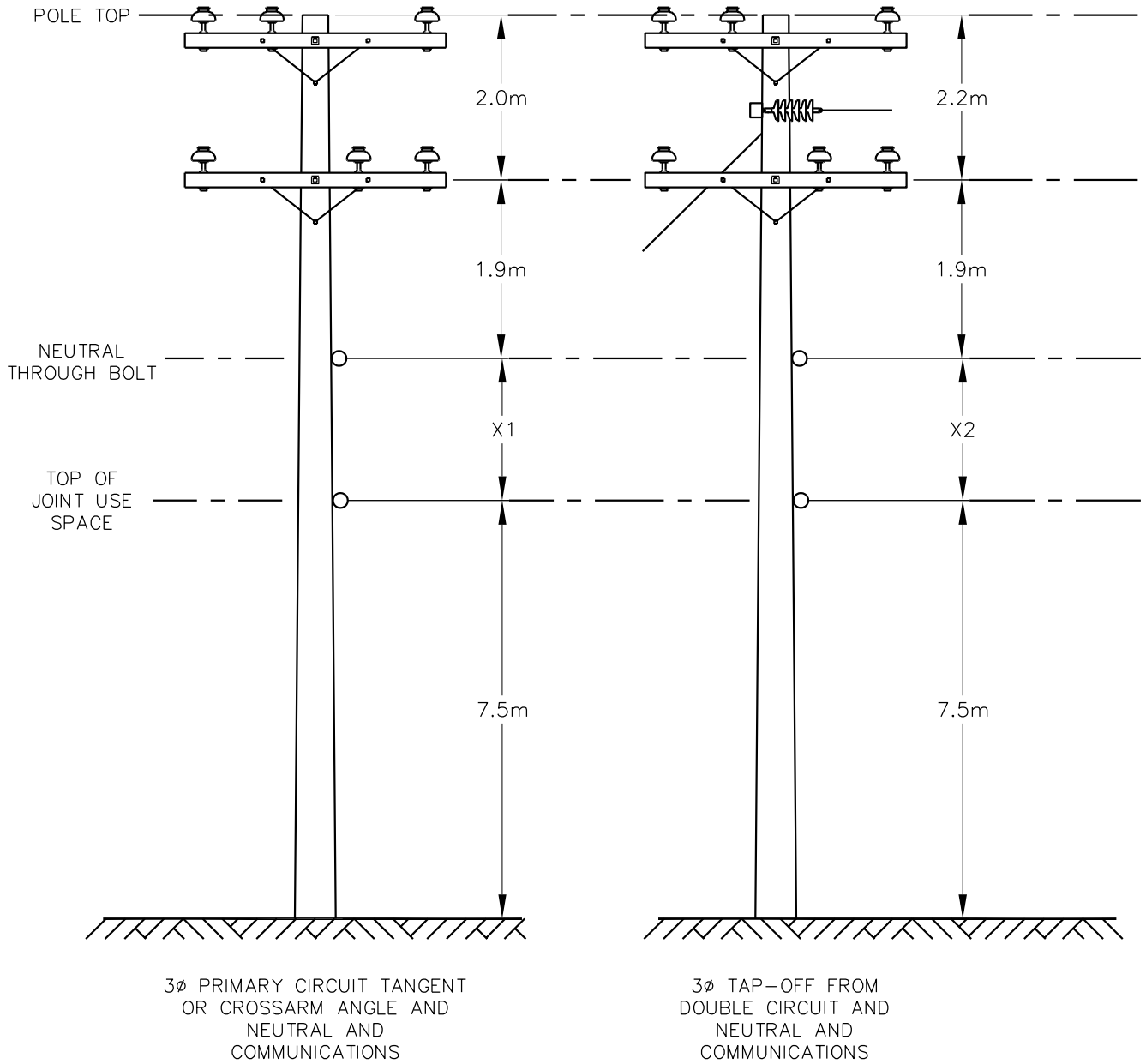
SPAN (m)	68 & UNDER	69 TO 72
X (m)	2.1	3.5
POLE LENGTH	15.2m (50')	16.8m (55')

NOTES:

1. MAXIMUM SPAN LENGTH = 72 METERS
2. SECONDARY CONDUCTORS NOT TO BE USED ON 60M RULING SPANS.
3. ALL DIMENSIONS ARE IN MILLIMETERS UNLESS OTHERWISE INDICATED.

SCALE: N.T.S.

SaskPower – DISTRIBUTION STANDARDS				
APPROVAL L.MOEN	DESIGN CHK. L.MOEN	DRN.D.REDEKOPP CHKD.	TYPICAL CONFIGURATIONS URBAN 60M DISTRIBUTION	
		2021-07-06		
DATE OF ISSUE	2021-08-16	DRAWING NO. A-14-00	SHEET 10 of 12	REV. -



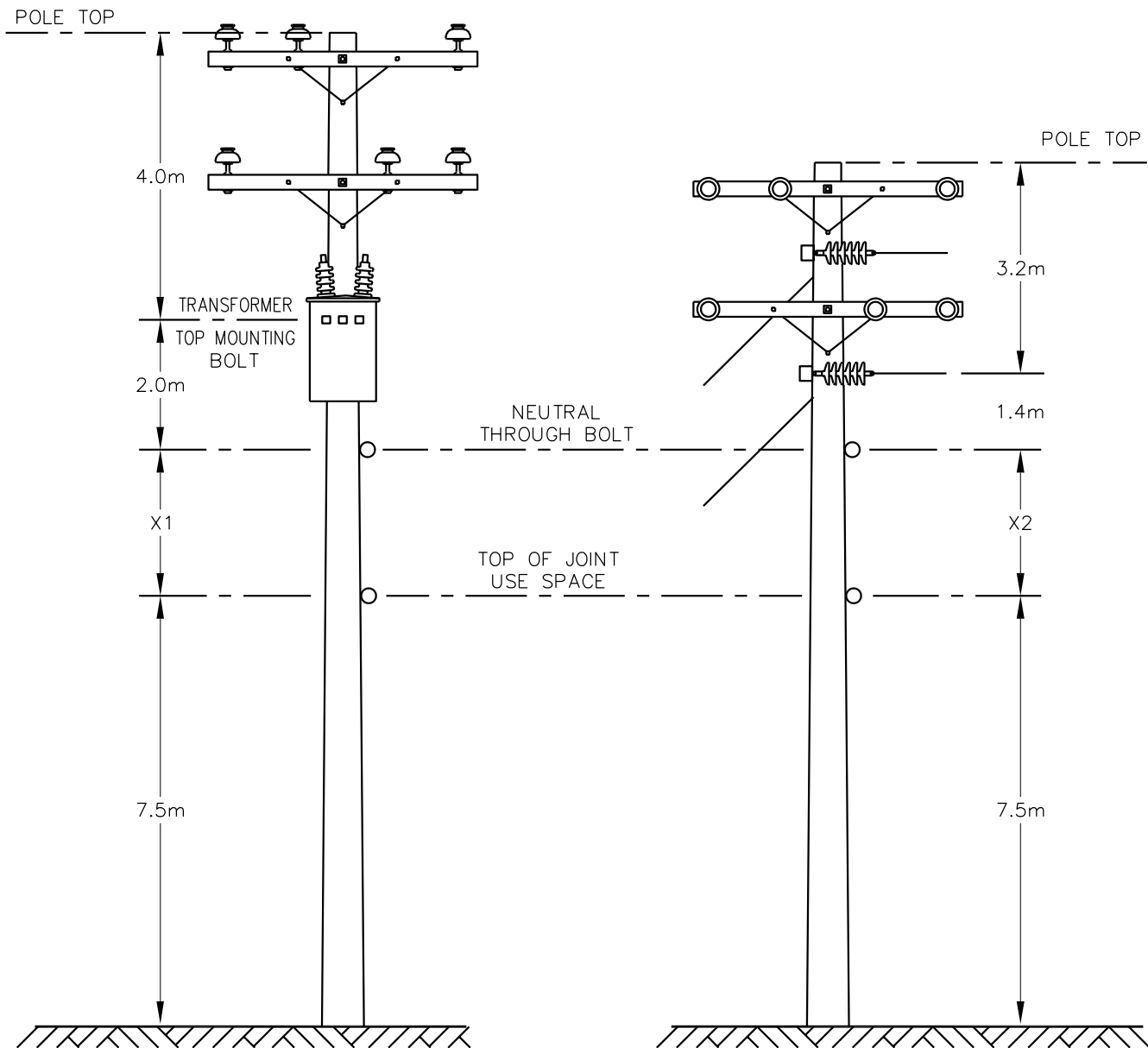
SPAN (m)	72 & UNDER
X1 (m)	2.8
X2 (m)	2.6
POLE LENGTH	16.8m (55')

NOTES:

1. MAXIMUM SPAN LENGTH = 72 METERS
2. SECONDARY CONDUCTORS NOT TO BE USED ON 60M RULING SPANS.
3. ALL DIMENSIONS ARE IN MILLIMETERS UNLESS OTHERWISE INDICATED.

SCALE: N.T.S.

SaskPower – DISTRIBUTION STANDARDS				
APPROVAL L.MOEN	DESIGN CHK. L.MOEN	DRN.D.REDEKOPP CHKD. 2021-07-06	TYPICAL CONFIGURATIONS URBAN 60M DISTRIBUTION	
DATE OF ISSUE	2021-08-16	DRAWING NO. A-14-00	SHEET 11 of 12	REV. -



3Ø DOUBLE CIRCUIT TANGENT OR CROSSARM ANGLE AND TRANSFORMER AND NEUTRAL AND COMMUNICATIONS

3Ø DOUBLE CIRCUIT BUCKARM ANGLE OR CORNER AND NEUTRAL AND COMMUNICATIONS

SPAN (m)	68 & UNDER	69 TO 72
X1 (m)	2.1	3.4
X1 POLE LENGTH	18.3m (60')	19.8m (65')
X2 (m)	2.1	3.5
X2 POLE LENGTH	16.8m (55')	18.3m (60')

NOTES:

1. MAXIMUM SPAN LENGTH = 72 METERS
2. SECONDARY CONDUCTORS NOT TO BE USED ON 60M RULING SPANS.
3. ALL DIMENSIONS ARE IN MILLIMETERS UNLESS OTHERWISE INDICATED.

SCALE: N.T.S.

BACK TO INDEX PAGE

SaskPower – DISTRIBUTION STANDARDS

APPROVAL L.MOEN	DESIGN CHK. L.MOEN	DRN.D.REDEKOPP CHKD. 2021-07-06	TYPICAL CONFIGURATIONS URBAN 60M DISTRIBUTION
DATE OF ISSUE	2021-08-16	DRAWING NO. A-14-00	
		SHEET 12 of 12	REV. -

BILL OF MATERIAL

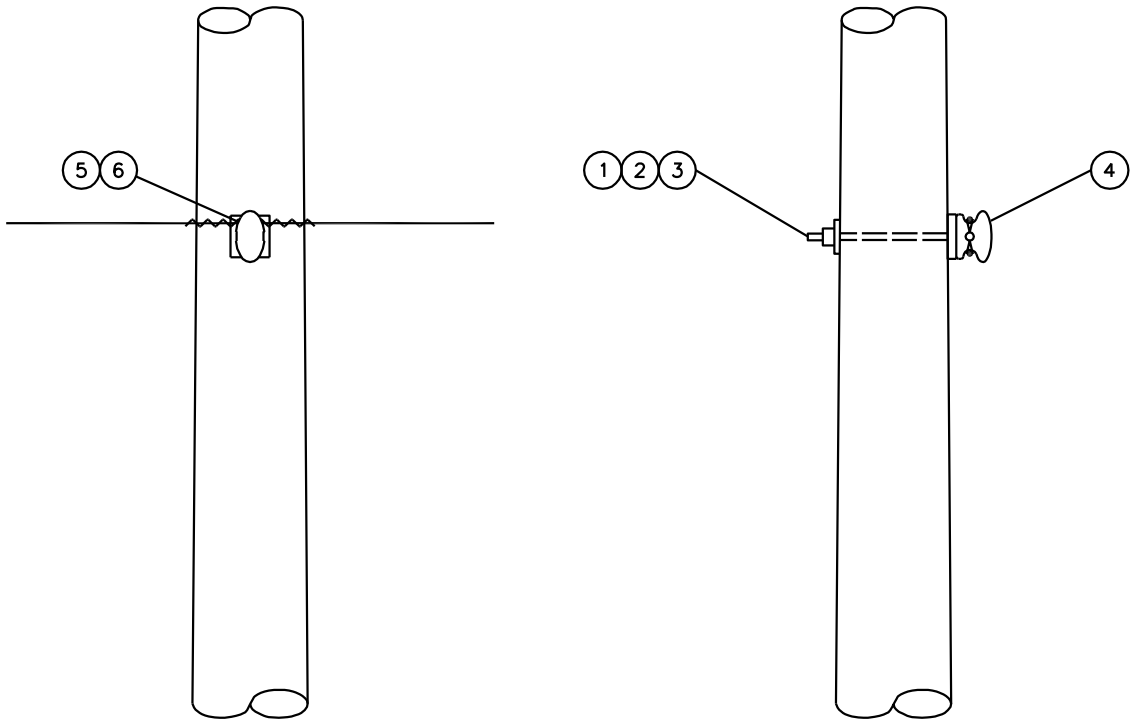
ITEM NO.	CODE NO.	QUANTITY	DESCRIPTION
1	1 13 12	1	BOLT – MACHINE – 5/8" X 12"
2	1 93 27	1	WASHER – LOCK – DOUBLE COIL SPRING – 5/8"
3	1 93 42	1	WASHER – SQUARE – 2-1/4" X 2-1/4" X 13/16" HOLE
4	2 32 02	1	BRACKET – SECONDARY/NEUTRAL
5	2 58 10	1 SET	ARMOUR ROD – STEEL – 1/0 – 47"
6	2 97 04	0.5m	TIE WIRE – ALUMINUM – #4

BACK TO INDEX PAGE

SaskPower - DISTRIBUTION STANDARDS

APPROVAL	DESIGN CHK	DRN. BG	NEUTRAL WIRE TANGENT AND DEFLECTION FOR ANGLES OF 0° TO 4°
L. MOEN	B. GEBHART	CHKD.	
		07/30/2020	
DATE OF ISSUE: 2020-12-18	DRAWING NO: A-14-01	SHEET 1 OF 2	REV. B

BACK TO INDEX PAGE



SCALE: N.T.S

ALL DIMENSIONS ARE IN MILLIMETRES UNLESS OTHERWISE INDICATED

SaskPower – DISTRIBUTION STANDARDS				
APPROVAL L.MOEN	DESIGN CHK. A.UHREN	DRN. N.KIM CHKD.	NEUTRAL WIRE TANGENT AND DEFLECTION FOR ANGLES OF 0° TO 4°	
		2016-04-19		
DATE OF ISSUE	2016/05/04	DRAWING NO. A-14-01	SHEET 2 of 2	REV. B

BILL OF MATERIAL

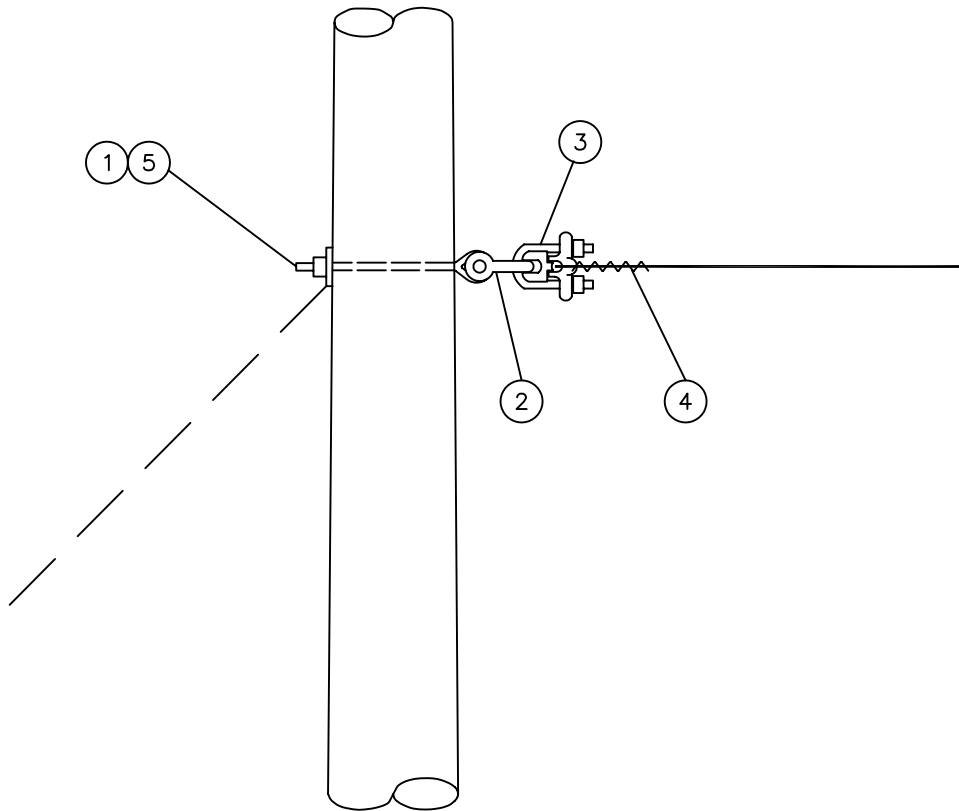
ITEM NO.	CODE NO.	QUANTITY	DESCRIPTION
1	1-11-12	1	BOLT-EYE - 5/8" x 12"
2	1-25-03	1	CLEVIS-20,000# - 1/2" x 3"
3	2-02-32	1	CLAMP-SEMI STRAIN
4	2-58-10	1 SET	ROD-PREFORMED ARMOUR
5	1-93-27	1	WASHER-LOCK-DOUBLE COIL SPRING - 5/8"
6	05-640-000	1	SIGN-DANGER

BACK TO INDEX PAGE

SaskPower - DISTRIBUTION STANDARDS

DRN.	DESIGN CHK.	APPROVAL	NEUTRAL WIRE DEFLECTION FOR ANGLES OF 5° TO 59°	
CHKD.				
DATE	DATE	DATE		
DATE OF ISSUE 87-12-01		DRAWING NO: A-14-02	SHEET 1 of 2	REV. A

BACK TO INDEX PAGE



NOTE:

1. GUY MATERIAL NOT INCLUDED IN BILL OF MATERIAL. REFER TO SECTION A-32 FOR GUY INSTALLATION AND MATERIAL.
2. DANGER SIGN (ITEM 6) TO BE MOUNTED 1.5m ABOVE GRADE. REFER TO SECTION A-30 FOR INSTALLATION DETAILS.

SCALE: N.T.S. ALL DIMENSIONS ARE IN MILLIMETRES UNLESS OTHERWISE INDICATED

SASKATCHEWAN POWER CORP. – DISTRIBUTION ENGINEERING STANDARDS

DRN. <i>DK</i>	DESIGN CHK.	SAFETY APP.	APPROVAL	NEUTRAL WIRE DEFLECTION FOR ANGLES OF 5° TO 59°
CHKD. <i>FTK</i>				
DATE 87-03-16	DATE	DATE	DATE	
DATE OF ISSUE 87-06-01	DRAWING NO. A-14-02		SHEET 2 of 2	REV. 0

BILL OF MATERIAL

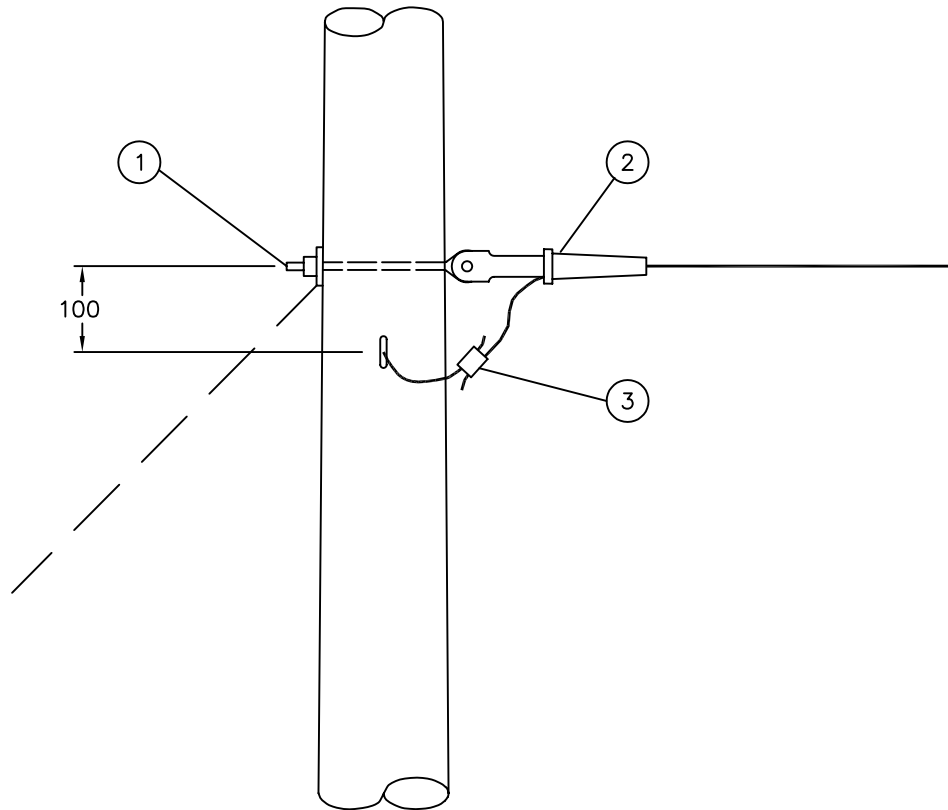
ITEM NO.	CODE NO.	QUANTITY	DESCRIPTION
1	1-11-12	2	BOLT-EYE - 5/8" x 12"
2	2-XX-XX	2	CLAMP-DEADEND (SIZE TO SUIT - SEE NOTE 1)
3	2-06-XX	1	CONNECTOR-AMPACT (SIZE TO SUIT - SEE NOTE 2)
3	5-09-XX	1	CONNECTOR-COMPRESSION (SIZE TO SUIT - SEE NOTE 2)
4	05-640-000	1	SIGN-DANGER
			<p>NOTE:</p> <p>1. REFER TO DWG. A-14-00 FOR SPECIFIC MATERIAL ITEM REQUIRED.</p> <p>2. REFER TO SECTION A-36 FOR TYPE AND SIZE OF CONNECTOR REQUIRED.</p>

BACK TO INDEX PAGE

SaskPower - DISTRIBUTION STANDARDS

DRN.	DESIGN CHK.	APPROVAL	NEUTRAL WIRE DEFLECTION AND CORNER FOR ANGLES OF 60° TO 90°	
CHKD.				
DATE	DATE	DATE		
DATE OF ISSUE 87-06-01		DRAWING NO: A-14-03	SHEET 1 of 2	REV. 0

BACK TO INDEX PAGE



NOTE:

1. GUY MATERIAL NOT INCLUDED IN BILL OF MATERIAL. REFER TO SECTION A-32 FOR GUY INSTALLATION AND MATERIAL.
2. DANGER SIGN (ITEM 4) TO BE MOUNTED 1.5m ABOVE GRADE. REFER TO SECTION A-30 FOR INSTALLATION DETAILS.

SCALE: N.T.S. ALL DIMENSIONS ARE IN MILLIMETRES UNLESS OTHERWISE INDICATED

SASKATCHEWAN POWER CORP. – DISTRIBUTION ENGINEERING STANDARDS

DRN. <i>DK</i>	DESIGN CHK.	SAFETY APP.	APPROVAL	NEUTRAL WIRE DEFLECTION AND CORNER FOR ANGLES OF 60° TO 90°
CHKD. <i>FTK</i>	DATE	DATE	DATE	
DATE 87-03-16	DATE	DATE	DATE	
DATE OF ISSUE 87-06-01	DRAWING NO. A-14-03		SHEET 2 of 2	REV. 0

BILL OF MATERIAL

ITEM NO.	CODE NO.	QUANTITY	DESCRIPTION
1	1-11-12	1	BOLT – EYE – 5/8” x 12”
2	2-XX-XX	1	CLAMP – DEADEND (SIZE TO SUIT – SEE NOTE 1)
3	05-640-000	1	SIGN – DANGER
4	1-85-01	0.5 LB	STAPLE – FENCE
5	1-85-02	12	STAPLE – MOULDING
6	2-27-00	20 FT	MOULDING – GROUND WIRE
7	5-09-XX	1	CONNECTOR- COMPRESSION (SIZE TO SUIT – SEE NOTE 2)
8	2-83-04	10 m	WIRE – CU #4/7 STR

NOTE:

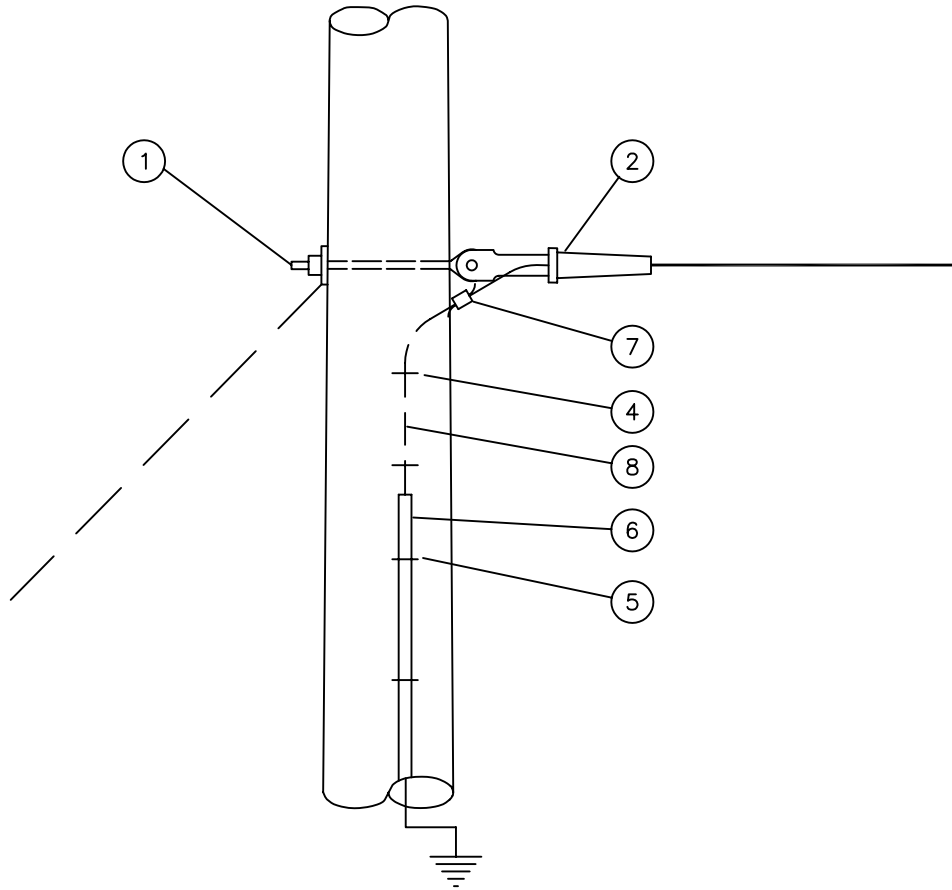
1. REFER TO DWG. A-14-00 FOR SPECIFIC MATERIAL ITEM REQUIRED.
2. REFER TO SECTION A-36 FOR TYPE AND SIZE OF CRIMPIT.

BACK TO INDEX PAGE

SaskPower - DISTRIBUTION STANDARDS

DRN.	DESIGN CHK.	APPROVAL	NEUTRAL WIRE DEADEND
CHKD.			
DATE		DATE	
DATE OF ISSUE 87-12-01		DRAWING NO: A-14-04	SHEET 1 of 2 REV. A

BACK TO INDEX PAGE



GROUND GRID
TYPE "A"

NOTE:

1. GUY MATERIAL NOT INCLUDED IN BILL OF MATERIAL. REFER TO SECTION A-32 FOR GUY INSTALLATION AND MATERIAL.
2. DANGER SIGN (ITEM 3) TO BE MOUNTED 1.5m ABOVE GRADE. REFER TO SECTION A-30 FOR INSTALLATION DETAILS.

SCALE: N.T.S. ALL DIMENSIONS ARE IN MILLIMETRES UNLESS OTHERWISE INDICATED

SaskPower - DISTRIBUTION STANDARDS

DRN. DK	DESIGN CHK.	SAFETY APP.	APPROVAL	NEUTRAL WIRE DEADEND
CHKD. FTK	DATE	DATE	DATE	
DATE 87-03-16	DATE	DATE	DATE	
DATE OF ISSUE 87-12-01	DRAWING NO. A-14-04		SHEET 2 of 2	REV. A

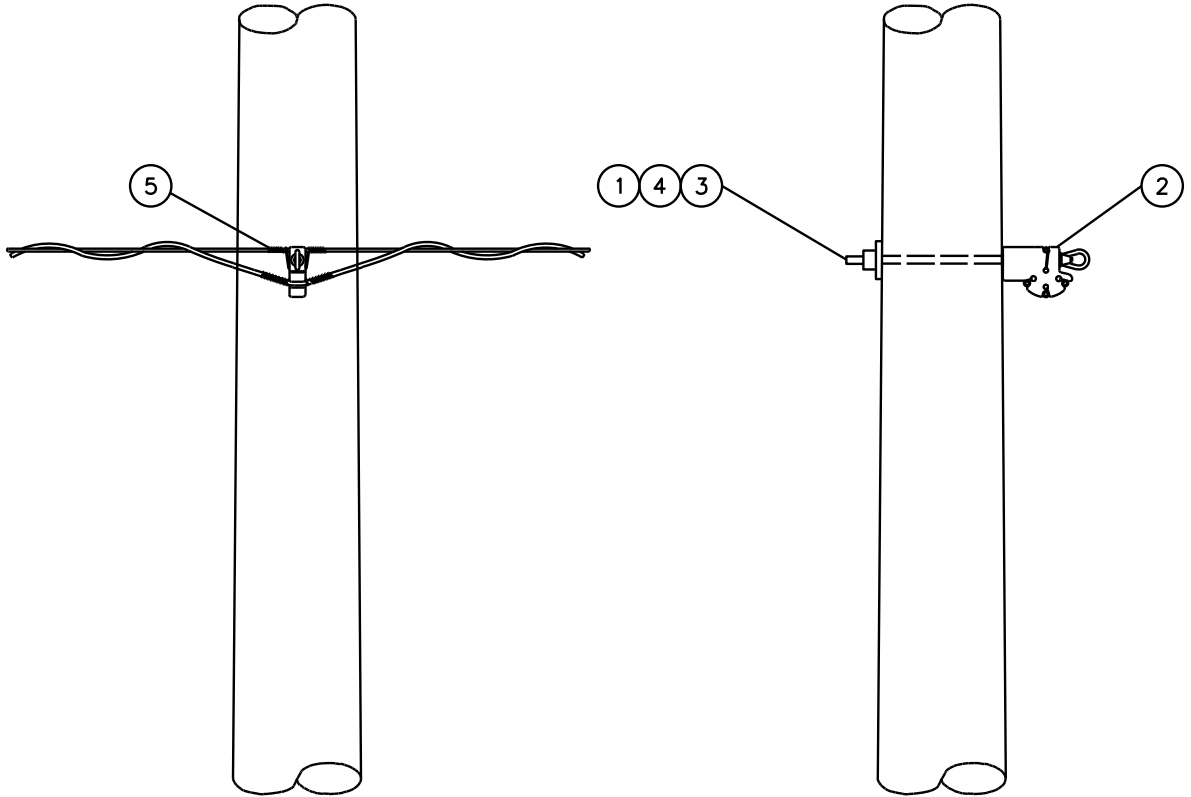
BILL OF MATERIAL

ITEM NO.	CODE NO.	QUANTITY	DESCRIPTION
1	1 13 12	1	BOLT MACHINE - 5/8" X 12"
2	1 21 04	1	BRACKET - SPREADER - 12"
3	1 93 27	1	WASHER-LOCK-DOUBLE COIL SPRING - 5/8"
4	1 93 42	1	WASHER-SQUARE - 2 1/4" x 2 1/4" x 13/16" HOLE
5	2 97 04	0.5 m	ALUMINUM TIE WIRE # 4

[BACK TO INDEX PAGE](#)

SaskPower - DISTRIBUTION STANDARDS

APPROVAL	DESIGN CHK	DRN.	DUPLEX SECONDARY TANGENT
M. ERETH	L. BAILEY	CHKD.	
		2014-06-19	
DATE OF ISSUE:	2014/11/17	DRAWING NO: A-14-05	SHEET 1 OF 2 REV. A



SCALE: N.T.S. ALL DIMENSIONS ARE IN MILLIMETRES UNLESS OTHERWISE INDICATED

SaskPower – DISTRIBUTION STANDARDS			
APPROVAL M.ERETH	DESIGN CHK. L.BAILEY	DRN. A.GATZKE CHKD. 2014-06-06	DUPLEX SECONDARY TANGENT
DATE OF ISSUE	2014/11/17	DRAWING NO. A-14-05	
		SHEET 2 of 2	REV. A

BILL OF MATERIAL

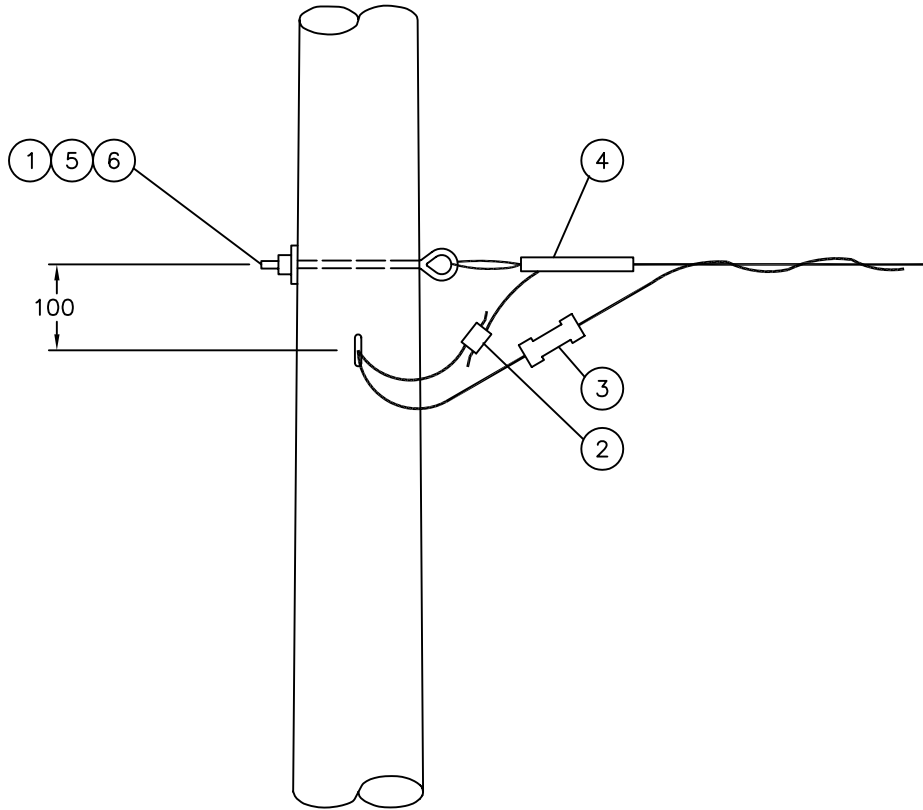
ITEM NO.	CODE NO.	QUANTITY	DESCRIPTION
1	1-11-12	2	BOLT-EYE - 5/8" x 12"
2	5-09-26	1	CONNECTOR-COMPRESSION
3	5-11-12	1	CONNECTOR-INSULINK
4	5-12-70	2	WEDGE CLAMP
5	1-93-27	2	WASHER-LOCK-DOUBLE COIL SPRING - 5/8"
6	1-93-42	2	WASHER-SQUARE - 2 1/4" x 2 1/4" x 13/16" HOLE

BACK TO INDEX PAGE

SaskPower - DISTRIBUTION STANDARDS

DRN.	DESIGN CHK.	APPROVAL	DUPLEX DEFLECTION AND CORNER FOR ANGLES OF 60° TO 90°	
CHKD.		DATE		
DATE	DATE	DATE		
DATE OF ISSUE	87-06-01	DRAWING NO: A-14-06	SHEET 1 of 2	REV. 0

BACK TO INDEX PAGE



NOTE:

1. GUY AND ANCHOR NOT REQUIRED. USE POLE KEYS. SEE ANCHOR SECTION A-32.

SCALE: N.T.S. ALL DIMENSIONS ARE IN MILLIMETRES UNLESS OTHERWISE INDICATED

SASKATCHEWAN POWER CORP. – DISTRIBUTION ENGINEERING STANDARDS

DRN. <i>DK</i>	DESIGN CHK.	SAFETY APP.	APPROVAL	DUPLEX DEFLECTION AND CORNER FOR ANGLES OF 60° TO 90°
CHKD. <i>FTK</i>				
DATE 87-03-16	DATE	DATE	DATE	
DATE OF ISSUE 87-06-01	DRAWING NO. A-14-06		SHEET 2 of 2	REV. 0

BILL OF MATERIAL

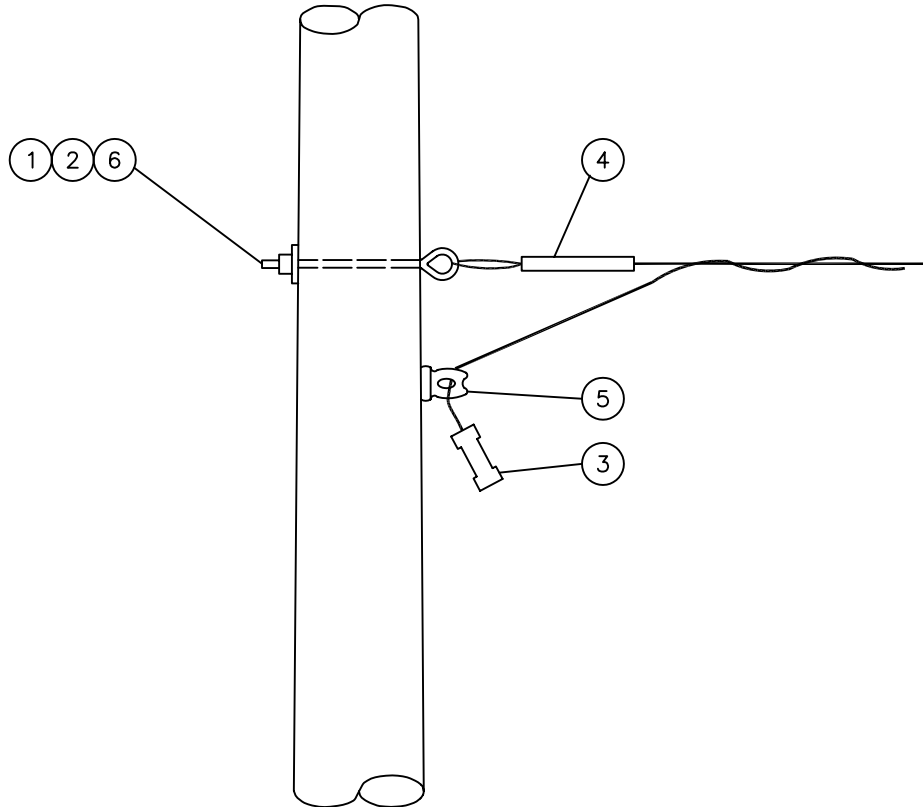
ITEM NO.	CODE NO.	QUANTITY	DESCRIPTION
1	1-11-12	1	BOLT-EYE - 5/8" x 12"
2	1-93-42	1	WASHER-SQUARE - 2 1/4" x 2 1/4" x 13/16" HOLE
3	5-11-12	1	CONNECTOR-INSULINK
4	5-12-70	1	WEDGE CLAMP
5	5-18-21	1	INSULATOR-SECONDARY (WIRE HOLDER)
6	1-93-27	1	WASHER-LOCK-DOUBLE COIL SPRING - 5/8"

BACK TO INDEX PAGE

SaskPower - DISTRIBUTION STANDARDS

DRN.	DESIGN CHK.	APPROVAL	DUPLEX SECONDARY DEADEND	
CHKD.				
DATE	DATE	DATE		
DATE OF ISSUE 87-06-01		DRAWING NO: A-14-07	SHEET 1 of 2	REV. 0

BACK TO INDEX PAGE



NOTE:

1. GUY AND ANCHOR NOT REQUIRED. USE POLE KEYS. SEE ANCHOR SECTION A-32.

SCALE: N.T.S. ALL DIMENSIONS ARE IN MILLIMETRES UNLESS OTHERWISE INDICATED

SASKATCHEWAN POWER CORP. – DISTRIBUTION ENGINEERING STANDARDS

DRN. <i>DK</i>	DESIGN CHK.	SAFETY APP.	APPROVAL	DUPLEX SECONDARY DEADEND
CHKD. <i>FTK</i>				
DATE 87-03-16	DATE	DATE	DATE	
DATE OF ISSUE 87-06-01	DRAWING NO. A-14-07		SHEET 2 of 2	REV. 0

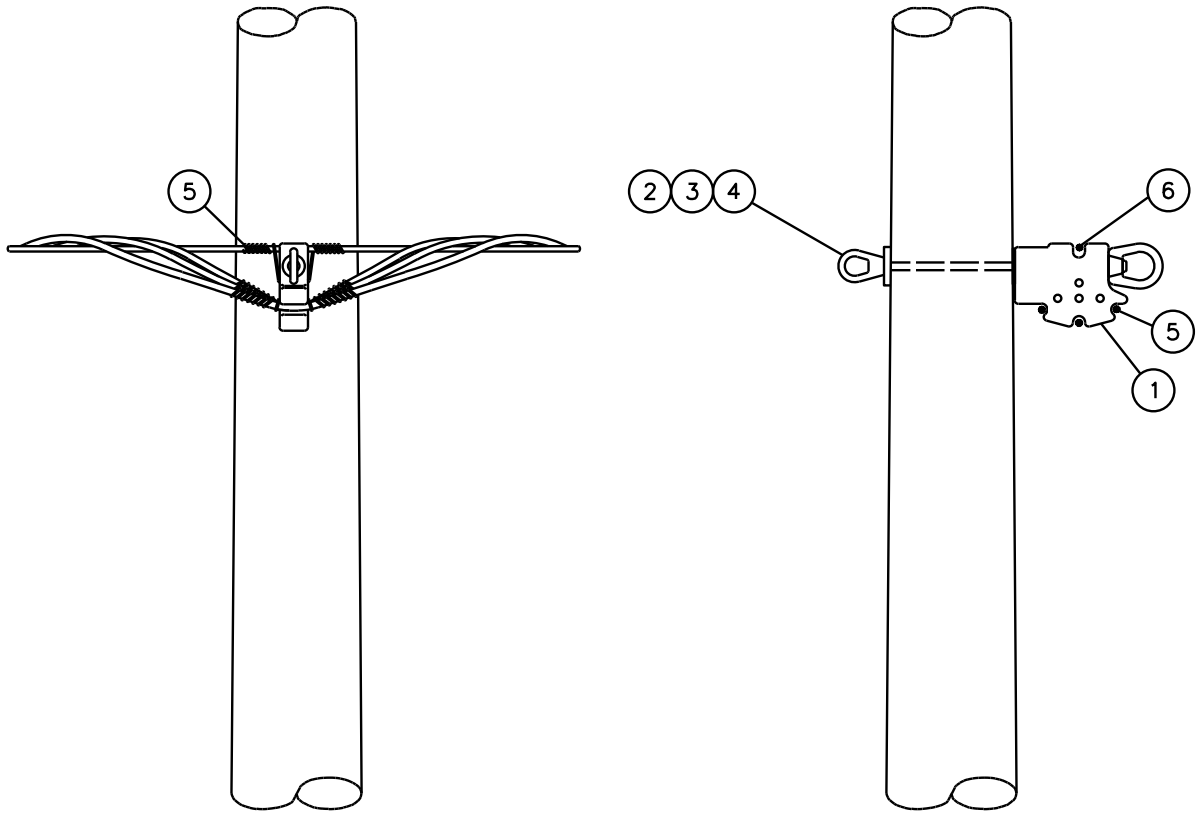
BILL OF MATERIAL

ITEM NO.	CODE NO.	QUANTITY		DESCRIPTION
		TX	QX	
1	1 21 04	1	1	BRACKET-SPREADER - 12"
2	1 50 00	1	1	NUT- EYE - 5/8"
3	1 93 27	1	1	WASHER-LOCK-DOUBLE COIL SPRING - 5/8"
4	1 93 42	1	1	WASHER-SQUARE - 2 1/4" x 2 1/4" x 13/16" HOLE
5	2 84 08	0.9m	1.4m	WIRE- #8 PWP COPPER
6	2 97 04	0.5m	0.5m	WIRE- #4 ALUMINUM TIE

BACK TO INDEX PAGE

SaskPower - DISTRIBUTION STANDARDS

APPROVAL	DESIGN CHK	DRN.	TRIPLEX AND QUADRUPL SECONDARY TANGENT	
M. ERETH	L. BAILEY	CHKD.		
		2014-06-18		
DATE OF ISSUE: 2014/11/17		DRAWING NO. A-14-08	SHEET 1 OF 2	REV. A



SCALE: N.T.S. ALL DIMENSIONS ARE IN MILLIMETRES UNLESS OTHERWISE INDICATED

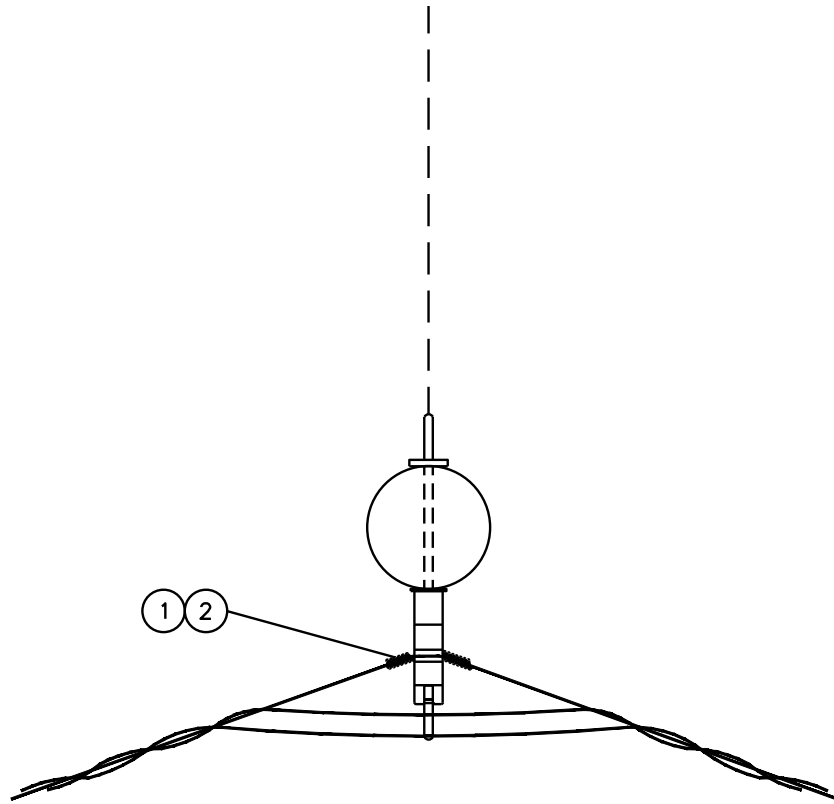
SaskPower – DISTRIBUTION STANDARDS			
APPROVAL M.ERETH	DESIGN CHK. L.BAILEY	DRN. A.GATZKE CHKD. 2014-06-06	TRIPLEX AND QUADRUPLEX SECONDARY TANGENT
DATE OF ISSUE	2014/11/17	DRAWING NO. A-14-08	
		SHEET 2 of 2	REV. A

BILL OF MATERIAL

ITEM NO.	CODE NO.	QUANTITY	DESCRIPTION
1	1 21 04	1	PLASTIC SPREADER BRACKET c/w NUTS, BOLT & WASHERS
2	2 97 04	1	WIRE - # 4 ALUMINUM TIE
3	05 640 000	1	SIGN-DANGER

[BACK TO INDEX PAGE](#)

SaskPower - DISTRIBUTION STANDARDS			
APPROVAL M. ERETH	DESIGN CHK L. BAILEY	DRN. LB CHKD.	DUPLEX, TRIPLEX, AND QUADRUPLEX DEFLECTION FOR ANGLES OF 10° to 59°
		2014-12-11	
DATE OF ISSUE:	2015/04/28	DRAWING NO: A-14-09	SHEET 1 OF 2
		REV. A	



NOTE:

1. GUY MATERIAL NOT INCLUDED IN BILL OF MATERIAL. REFER TO SECTION A-32 FOR GUY INSTALLATION AND MATERIAL.
2. DANGER SIGN (ITEM 3) TO BE MOUNTED 1.5m ABOVE GRADE. REFER TO SECTION A-30 FOR INSTALLATION DETAILS.
3. ENSURE THAT "HOT LEGS" DO NOT RUB ON SEMI-STRAIN CLAMP.

SCALE: N.T.S. ALL DIMENSIONS ARE IN MILLIMETRES UNLESS OTHERWISE INDICATED

SaskPower – DISTRIBUTION STANDARDS				
APPROVAL	DESIGN CHK.	DRN. A.GATZKE	DUPLEX, TRIPLEX, AND QUADRUPLIX DEFLECTION FOR ANGLES OF 10° TO 59°	
M.ERETH	L.BAILEY	CHKD.		
		2014-12-15		
DATE OF ISSUE	2015/04/28	DRAWING NO. A-14-09	SHEET 2 of 2	REV. A

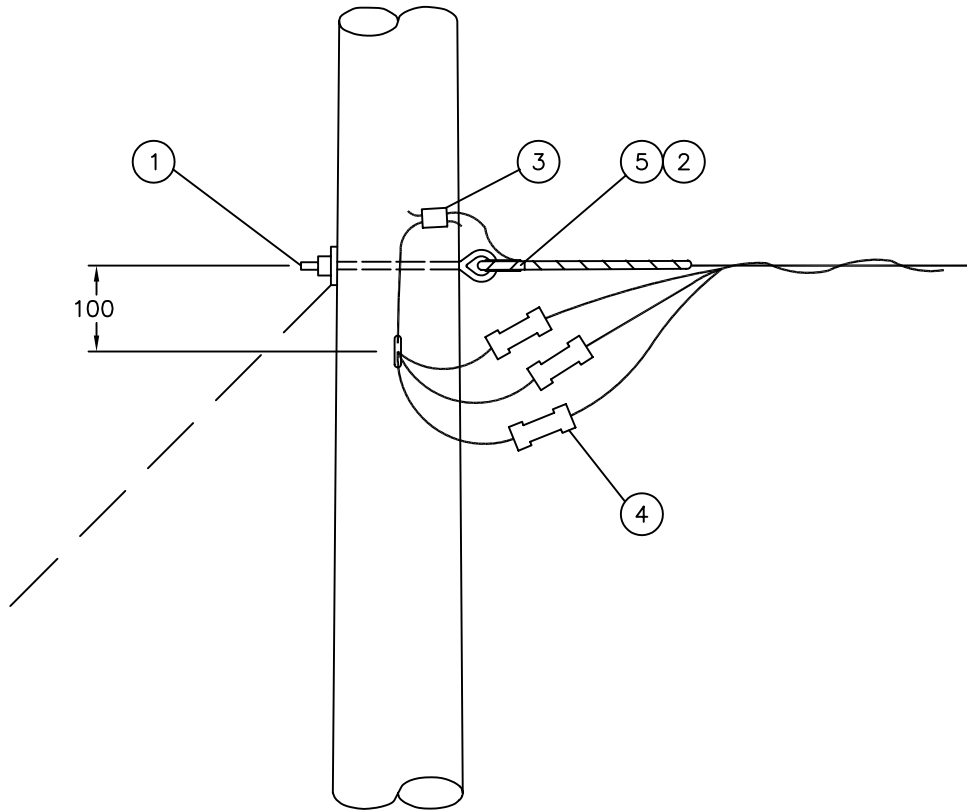
BILL OF MATERIAL

ITEM NO.	CODE NO.	QUANTITY		DESCRIPTION
		TX	QX	
1	1-11-12	2	2	BOLT-EYE - 5/8" x 12"
2	1-91-12	2	2	THIMBLE-GUY - 1/2"
3	5-09-10	1	1	CONNECTOR-COMPRESSION
4	5-11-XX	2	3	CONNECTOR-INSULINK (SIZE TO SUIT - SEE NOTE 1)
5	5-12-XX	2	2	DEADEND-PREFORMED (SIZE TO SUIT - SEE NOTE 2)
6	05-640-000	1	1	SIGN-DANGER
<p>NOTE:</p> <p>1. REFER TO SECTION A-36 FOR SIZE OF INSULINK REQUIRED.</p> <p>2. REFER TO DWG. A-14-00 FOR SPECIFIC MATERIAL ITEM REQUIRED.</p>				

BACK TO INDEX PAGE

SaskPower - DISTRIBUTION STANDARDS

DRN.	DESIGN CHK.	APPROVAL	TRIPLEX AND QUADRUPL DEFLECTION AND CORNER FOR ANGLES OF 60° to 90	
CHKD.				
DATE		DATE		
DATE OF ISSUE 87-06-01		DRAWING NO: A-14-10	SHEET 1 of 2	REV. 0



NOTE:

1. GUY MATERIAL NOT INCLUDED IN BILL OF MATERIAL. REFER TO SECTION A-32 FOR GUY INSTALLATION AND MATERIAL.
2. DANGER SIGN (ITEM 6) TO BE MOUNTED 1.5m ABOVE GRADE. REFER TO SECTION A-30 FOR INSTALLATION DETAILS.

SCALE: N.T.S. ALL DIMENSIONS ARE IN MILLIMETRES UNLESS OTHERWISE INDICATED

SASKATCHEWAN POWER CORP. – DISTRIBUTION ENGINEERING STANDARDS

DRN. DK	DESIGN CHK.	SAFETY APP.	APPROVAL	TRIPLEX AND QUADRUPLEX DEFLECTION AND CORNER FOR ANGLES OF 60° TO 90°
CHKD. FTK				
DATE 87-03-16	DATE	DATE	DATE	
DATE OF ISSUE 87-06-01	DRAWING NO. A-14-10		SHEET 2 of 2	REV. 0

BILL OF MATERIAL

ITEM NO.	CODE NO.	QUANTITY		DESCRIPTION
		TX	QX	
1	1-11-12	1	1	BOLT-EYE - 5/8" x 12"
2	1-85-01	1/2 LB	1/2 LB	STAPLES-FENCE
3	1-85-02	20	20	STAPLE-MOULDING
4	1-91-12	1	1	THIMBLE-GUY - 1/2"
5	2-27-00	30 FT	30 FT	MOULDING-GROUND WIRE
6	2-83-04	10m	10m	WIRE-CU #4/7 STR
7	5-09-27	1	1	CONNECTOR-COMPRESSION
8	5-11-XX	2	3	CONNECTOR-INSULINK (SIZE TO SUIT - SEE NOTE 1)
9	5-12-XX	1	1	DEADEND-PREFORMED (SIZE TO SUIT - SEE NOTE 2)
10	5-18-21	2	3	INSULATOR-SECONDARY (WIRE HOLDER)
11	05-640-000	1	1	SIGN-DANGER

NOTE:

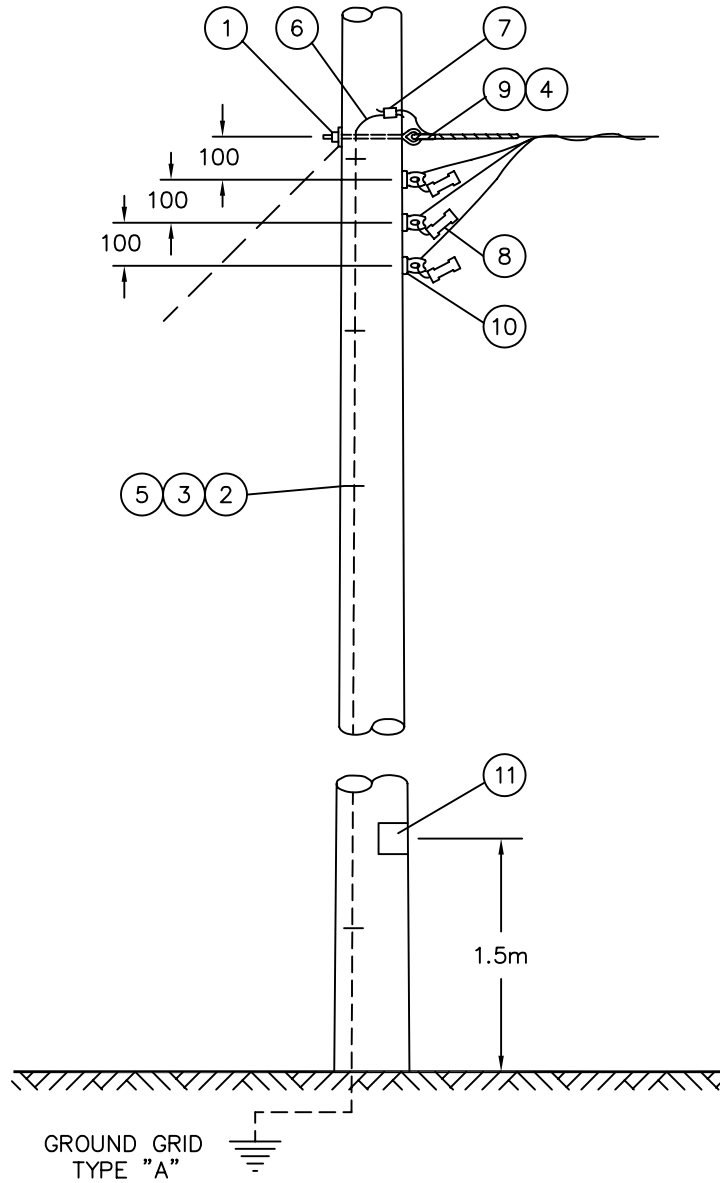
1. REFER TO SECTION A-36 FOR SIZE OF INSULINK REQUIRED.
2. REFER TO DWG. A-14-00 FOR SPECIFIC MATERIAL ITEM REQUIRED.

BACK TO INDEX PAGE

SaskPower - DISTRIBUTION STANDARDS

DRN.	DESIGN CHK.	APPROVAL	TRIPLEX AND QUADRUPLIX SECONDARY DEADEND
CHKD.			
DATE	DATE	DATE	

BACK TO INDEX PAGE



NOTE:

1. GUY MATERIAL NOT INCLUDED IN BILL OF MATERIAL. REFER TO SECTION A-32 FOR GUY INSTALLATION AND MATERIAL.
2. REFER TO SECTION A-30 FOR DANGER SIGN INSTALLATION DETAIL.

SCALE: N.T.S. ALL DIMENSIONS ARE IN MILLIMETRES UNLESS OTHERWISE INDICATED

SASKATCHEWAN POWER CORP. - DISTRIBUTION ENGINEERING STANDARDS

DRN. DK	DESIGN CHK.	SAFETY APP.	APPROVAL	TRIPLEX AND QUADRUPLIX SECONDARY DEADEND
CHKD. FTK				
DATE 87-03-17	DATE	DATE	DATE	
DATE OF ISSUE 87-06-01	DRAWING NO. A-14-11		SHEET 2 of 2	REV. 0

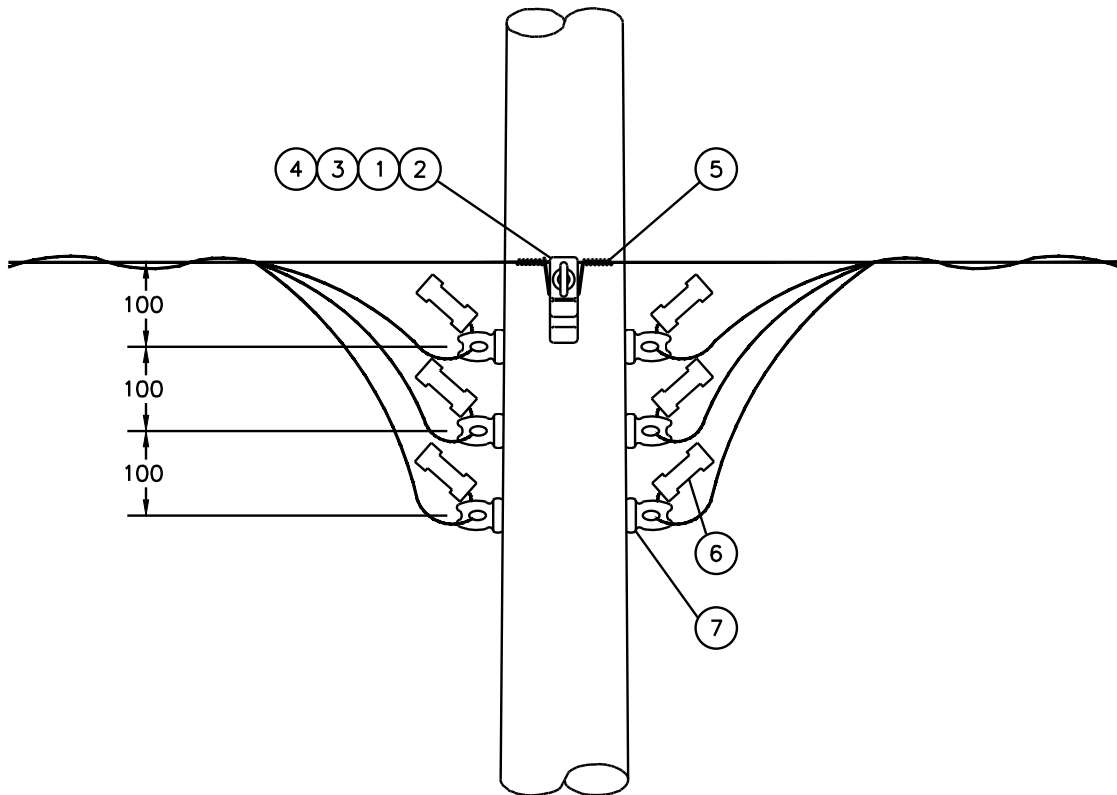
BILL OF MATERIAL

ITEM NO.	CODE NO.	QUANTITY		DESCRIPTION
		TX	QX	
1	1 21 04	1	1	SPREADER BRACKET - 12"
2	1 50 00	1	1	NUT- EYE - 5/8"
3	1 93 27	1	1	WASHER-LOCK-DOUBLE COIL SPRING - 5/8"
4	1 93 42	1	1	WASHER-SQUARE - 2 1/4" x 2 1/4" x 13/16" HOLE
5	2 97 04	0.5m	0.5m	WIRE- #4 ALUMINUM TIE
6	5 11 XX	4	6	CONNECTOR-INSULINK (SIZE TO SUIT - SEE NOTE 1)
7	5 18 21	4	6	INSULATOR-SECONDARY (WIRE HOLDER)
<p>NOTE:</p> <p>1. REFER TO DRAWING A-36-05 FOR SIZE OF INSULINK REQUIRED.</p>				

BACK TO INDEX PAGE

SaskPower - DISTRIBUTION STANDARDS

APPROVAL	DESIGN CHK	DRN.	TRIPLEX AND QUADRUPLEX SECONDARY CUT FOR NEW CONSTRUCTION
M. ERETH	L. BAILEY	CHKD.	
		2014-06-19	
DATE OF ISSUE:	2014/11/17	DRAWING NO. A-14-12	SHEET 1 OF 2
			REV. A



SCALE: N.T.S. ALL DIMENSIONS ARE IN MILLIMETRES UNLESS OTHERWISE INDICATED

SaskPower – DISTRIBUTION STANDARDS			
APPROVAL M.ERETH	DESIGN CHK. L.BAILEY	DRN. A.GATZKE CHKD. 2014-06-06	TRIPLEX AND QUADRUPLEX SECONDARY CUT FOR NEW CONSTRUCTION
DATE OF ISSUE	2014/11/17	DRAWING NO. A-14-12	
		SHEET 2 of 2	REV. A

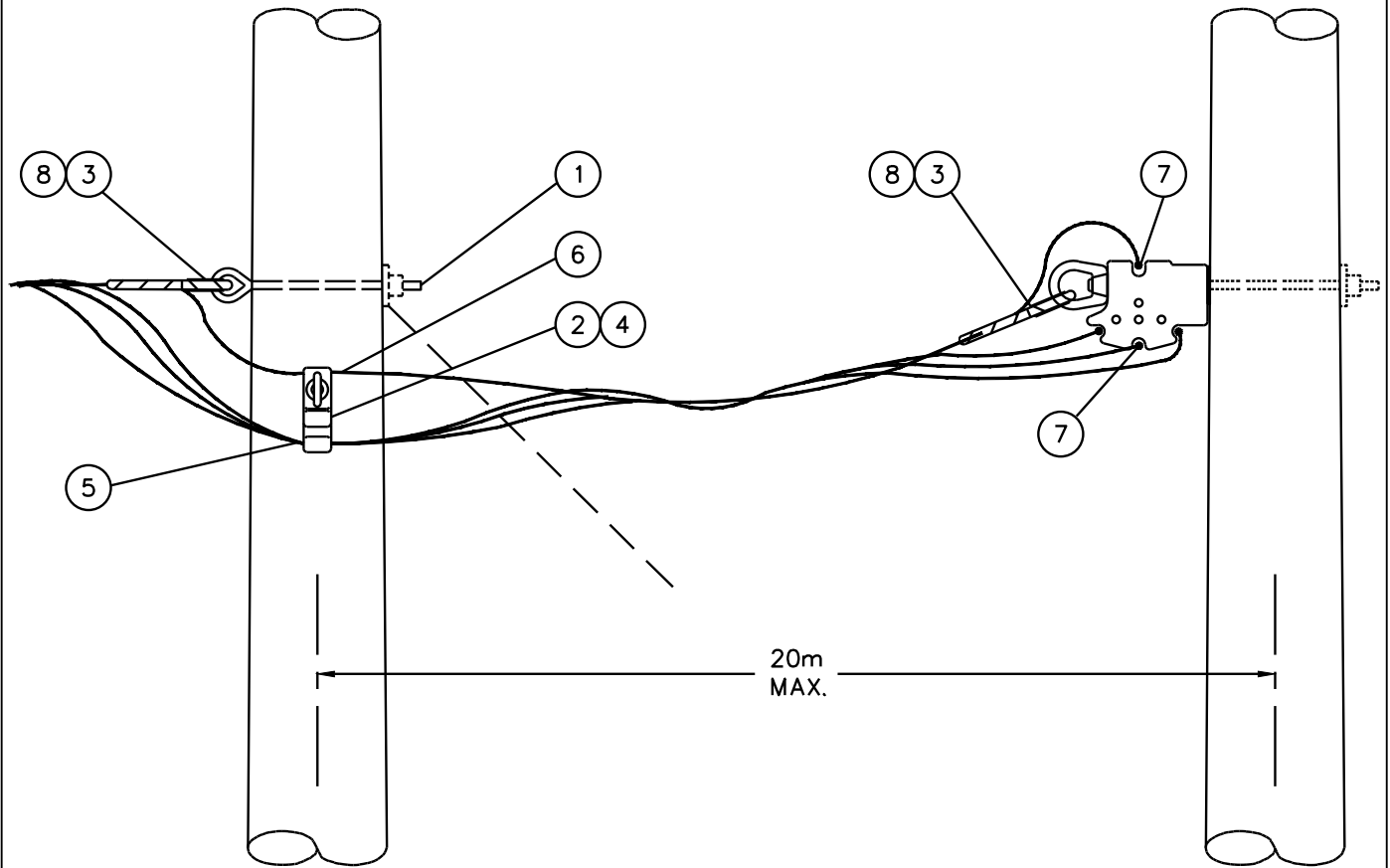
BILL OF MATERIAL

ITEM NO.	CODE NO.	QUANTITY		DESCRIPTION
		TX	QX	
1	1 11 12	1	1	BOLT- EYE - 5/8" x 12"
2	1 21 04	1	1	BRACKET -SPREADER - 12"
3	1 91 12	2	2	THIMBLE-GUY-GALVANIZED-1/2"
4	1 93 42	1	1	WASHER-SQUARE-2 1/4" X 2 1/4"-13/16" HOLE
5	2 84 08	0.9 m	0.9 m	WIRE-COPPER-#8 SOLID-M.H.D. P.E. COVER
6	2 97 04	0.5 m	0.5 m	WIRE-TIE-#4 ALUMINUM SOLID - BARE SOFT
7	5 09 XX	3	4	CONNECTOR-COMPRESSION (SIZE TO SUIT- SEE NOTE 1)
8	5 13 XX	2	2	DEADEND-PREFORMED (SIZE TO SUIT - SEE NOTE 2)
9	05 640 000	1	1	SIGN-DANGER
<p>NOTE:</p> <p>1. REFER TO SECTION A-36 FOR CRIMPIT SIZE AND CODE.</p> <p>2. SEE DWG. A-14-00 FOR SPECIFIC MATERIAL ITEM REQUIRED.</p>				

BACK TO INDEX PAGE

SaskPower - DISTRIBUTION STANDARDS

APPROVAL	DESIGN CHK	DRN.	TRIPLEX AND QUADRUPLEX SLACKSPAN
M. ERETH	L. BAILEY	CHKD.	
		2014-06-19	
DATE OF ISSUE: 2014/11/17		DRAWING NO. A-14-13	SHEET 1 OF 2
			REV. B



NOTE:

1. GUY MATERIAL NOT INCLUDED IN BILL OF MATERIAL. REFER TO SECTION A-32 FOR GUY INSTALLATION AND MATERIAL.
2. DANGER SIGN (ITEM 10) TO BE MOUNTED 1.5m ABOVE GRADE. REFER TO SECTION A-30 FOR INSTALLATION DETAILS.

SCALE: N.T.S. ALL DIMENSIONS ARE IN MILLIMETRES UNLESS OTHERWISE INDICATED

SaskPower – DISTRIBUTION STANDARDS				
APPROVAL M.ERETH	DESIGN CHK. L.BAILEY	DRN. A.GATZKE CHKD. 2014-06-06	TRIPLEX AND QUADRUPLIX SLACKSPAN	
DATE OF ISSUE	2014/11/17	DRAWING NO. A-14-13		
			REV. A	

BILL OF MATERIAL

ITEM NO.	CODE NO.	QUANTITY	DESCRIPTION
1	1 12 06	2	BOLT – MACHINE – 1/2" X 6"
2	1 13 12	1	BOLT – MACHINE – 5/8" X 12"
3	1 13 16	1	BOLT – MACHINE – 5/8" X 16"
4	1 18 72	1	BRACE – BOW – 72"
5	1 29 10	1	CROSSARM – WOOD – 4" X 5" X 10'-0"
6	1 93 26	2	WASHER – DOUBLE LOCK – 1/2"
7	1 93 27	2	WASHER – DOUBLE LOCK – 5/8"
8	1 93 28	3	WASHER – DOUBLE LOCK – 3/4"
9	1 93 30	2	WASHER – ROUND – 1-3/8" X 9/16" HOLE
10	1 93 42	3	WASHER – SQUARE – 2-1/4" X 2-1/4" X 13/16" HOLE
11	1 93 46	3	WASHER – SQUARE – 4" X 15/16" HOLE
12	2 19 92	3	STUD – LINE POST INSULATOR
13	2 20 00	3	INSULATOR – LINE POST
14	2 59 69	3	ARMOUR ROD – TULIP

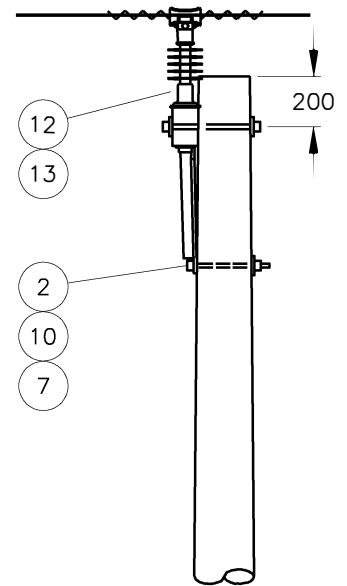
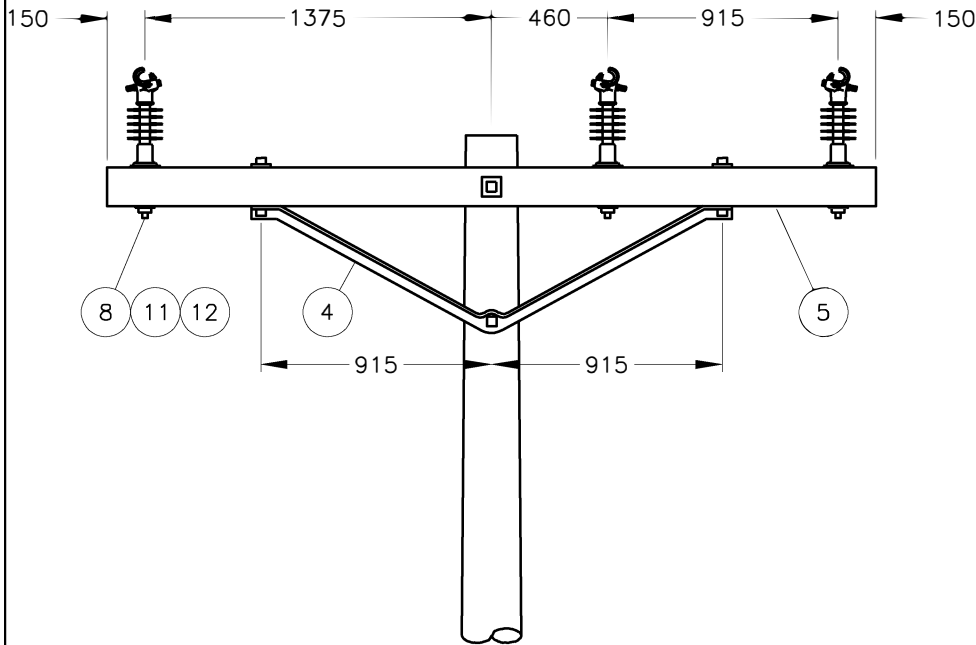
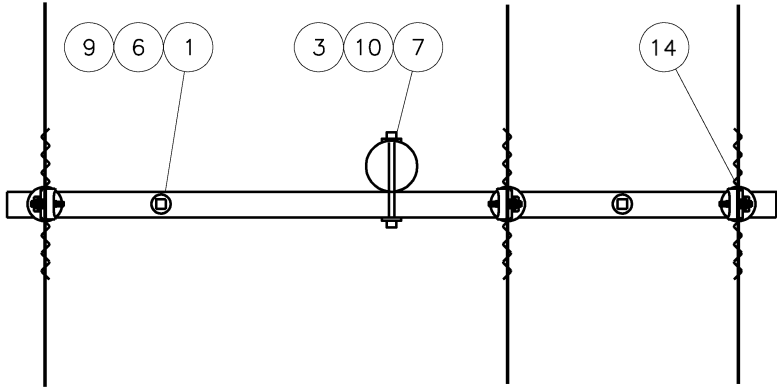
BACK TO INDEX PAGE

SaskPower - DISTRIBUTION STANDARDS

APPROVAL L MOEN	DESIGN CHK O FRANCIS	DRN. LM CHKD.	3Ø TANGENT DEFLECTIONS UP TO 2 DEGREES TULIP AAC
DATE OF ISSUE: 08/13/2020	DRAWING NO: A-14-150	SHEET 1 OF 2 REV. 0	

BACK TO INDEX PAGE

STRUCTURE USED HERE
○
●
○



NOTE:

1. DEFLECTIONS LIMITED TO 2 DEGREES.
2. REQUIRES 2/45' POLE RESIDENTIAL (38M RS, 46M MAX). REQUIRES 1/50' FOR INDUSTRIAL (60M RS, 60M MAX).
3. ALLOWS CLUSTER MOUNTED 600kg TRANSFORMERS OR SINGLE 910KG 3 PHASE TRANSFORMER/APPARATUS. LARGER OR HEAVIER APPARATUS REQUIRES UPCLASSED POLE.

SCALE: N.T.S. ALL DIMENSIONS ARE IN MILLIMETRES UNLESS OTHERWISE INDICATED

A14_150_02

SaskPower – DISTRIBUTION STANDARDS				
APPROVAL L.MOEN	DESIGN CHK. L.MOEN	DRN.E.GOTANA CHKD.	3Ø TANGENT DEFLECTIONS UP TO 2 DEGREES TULIP AAC	
		2020-03-10		
DATE OF ISSUE : 08/13/2020		DRAWING NO. A-14-150	SHEET 2 of 2	REV. -

BILL OF MATERIAL

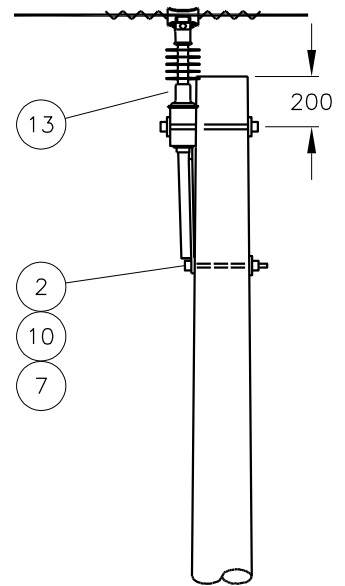
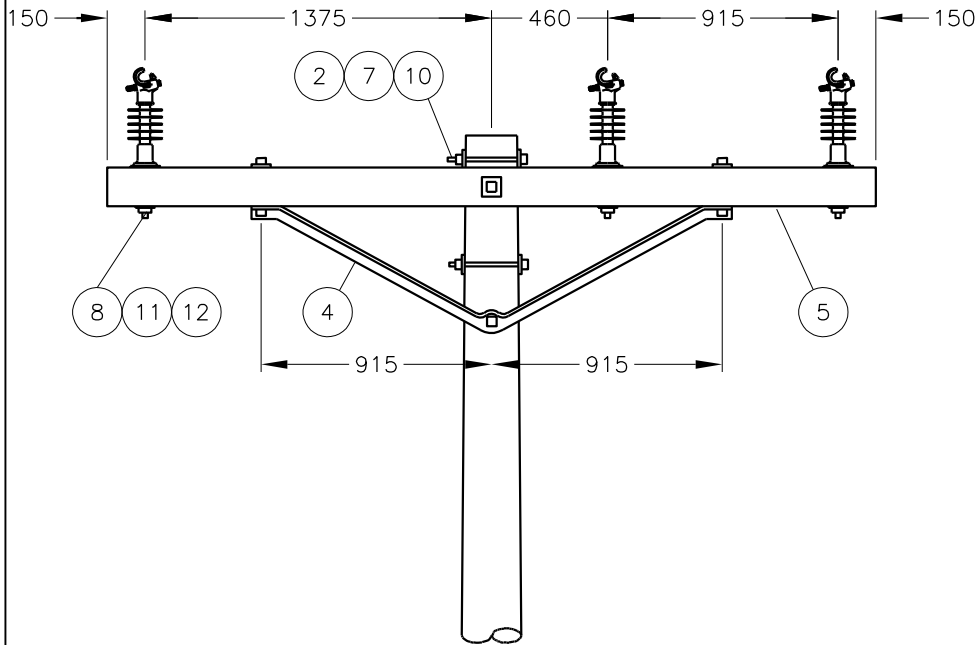
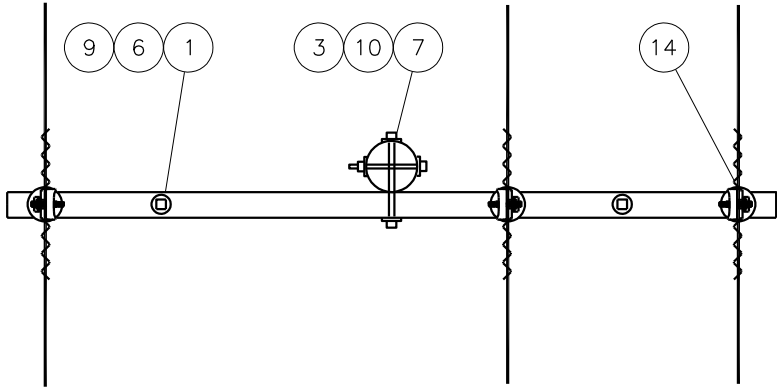
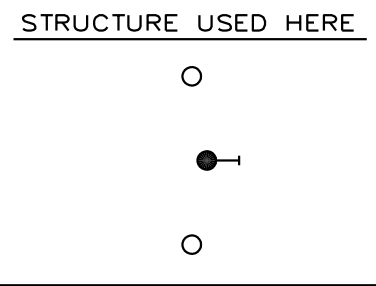
ITEM NO.	CODE NO.	QUANTITY	DESCRIPTION
1	1 12 06	2	BOLT – MACHINE – 1/2" X 6"
2	1 13 12	2	BOLT – MACHINE – 5/8" X 12"
3	1 13 16	1	BOLT – MACHINE – 5/8" X 16"
4	1 18 72	1	BRACE – ANGLE – 72"
5	1 29 10	1	CROSSARM – WOOD – 4" X 5" X 10'-0"
6	1 93 26	2	WASHER – DOUBLE LOCK – 1/2"
7	1 93 27	3	WASHER – DOUBLE LOCK – 5/8"
8	1 93 28	3	WASHER – DOUBLE LOCK – 3/4"
9	1 93 30	2	WASHER – ROUND – 1-3/8" X 9/16" HOLE
10	1 93 42	5	WASHER – SQUARE – 2-1/4" X 2-1/4" X 13/16" HOLE
11	1 93 46	3	WASHER – SQUARE – 4" X 15/16" HOLE
12	2 19 92	3	STUD – LINE POST INSULATOR
13	2 20 00	3	INSULATOR – LINE POST
14	2 59 69	3	ARMOUR ROD – TULIP

BACK TO INDEX PAGE

SaskPower - DISTRIBUTION STANDARDS

APPROVAL L MOEN	DESIGN CHK O FRANCIS	DRN. LM CHKD.	3Ø LIGHT ANGLE DEFLECTIONS OF 3 TO 10 DEGREES TULIP AAC
DATE OF ISSUE: 08/13/2020	DRAWING NO: A-14-151	SHEET 1 OF 2 REV. 0	

BACK TO INDEX PAGE



NOTES:

1. REQUIRES 4/45' POLE FOR RESIDENTIAL (38M RS, 46M MAX). REQUIRES 3/50' FOR INDUSTRIAL (60M RS, 68M MAX).
2. ALLOWS CLUSTER MOUNTED 600KG TRANSFORMERS OR SINGLE 910KG 3 PHASE TRANSFORMER/APPARATUS. LARGER OR HEAVIER APPARATUS REQUIRES UPCLASSED POLE.
3. DOWNGUY IS TYPE "A".
4. SIDEWALK GUYING IS NOT PERMISSIBLE. SHORT GUYING IS PERMISSIBLE (MINIMUM 5M).
5. GUYING MATERIAL IS NOT INCLUDED. REFER TO A-32.

SCALE: N.T.S. ALL DIMENSIONS ARE IN MILLIMETRES UNLESS OTHERWISE INDICATED

A14_151_02

SaskPower – DISTRIBUTION STANDARDS			
APPROVAL L.MOEN	DESIGN CHK. L.MOEN	DRN.E.GOTANA CHKD.	3Ø LIGHT ANGLE DEFLECTIONS OF 3 TO 10 DEGREES TULIP AAC
		2020-03-10	
DATE OF ISSUE : 08/13/2020		DRAWING NO. A-14-151	SHEET 2 of 2
			REV. -

BILL OF MATERIAL

ITEM NO.	CODE NO.	QUANTITY	DESCRIPTION
1	1 09 20	3	BOLT – DOUBLE ARMING – 5/8" X 20"
2	1 12 06	4	BOLT – MACHINE – 1/2" X 6"
3	1 13 12	1	BOLT – MACHINE – 5/8" X 12"
4	1 13 16	1	BOLT – MACHINE – 5/8" X 16"
5	1 18 72	2	BRACE – ANGLE – 72"
6	1 29 10	2	CROSSARM – WOOD – 4" X 5" X 10'-0"
7	1 93 26	4	WASHER – DOUBLE LOCK – 1/2"
8	1 93 27	8	WASHER – DOUBLE LOCK – 5/8"
9	1 93 28	6	WASHER – DOUBLE LOCK – 3/4"
10	1 93 30	4	WASHER – ROUND – 1 3/8" X 9/16" HOLE
11	1 93 42	12	WASHER – SQUARE – 2 1/4" X 2 1/4" X 13/16" HOLE
12	1 93 46	6	WASHER – SQUARE – 4" X 15/16" HOLE
13	2 19 92	6	STUD – LINE POST INSULATOR
14	2 20 00	6	INSULATOR – LINE POST
15	2 59 69	6	ARMOUR ROD – TULIP

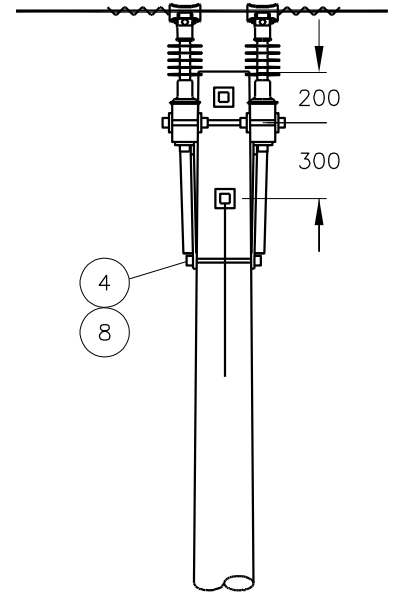
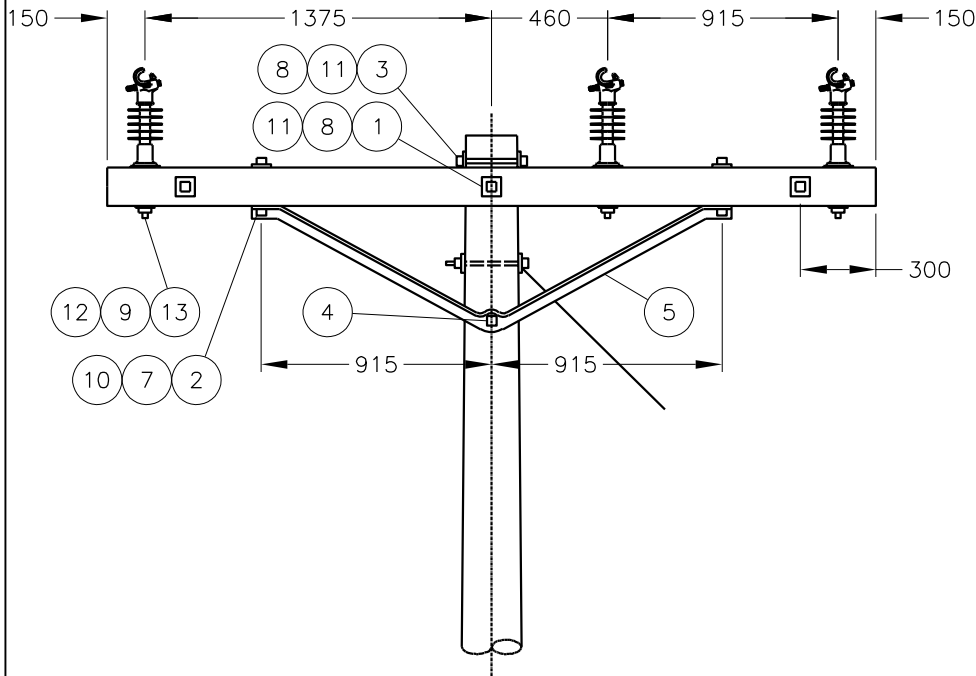
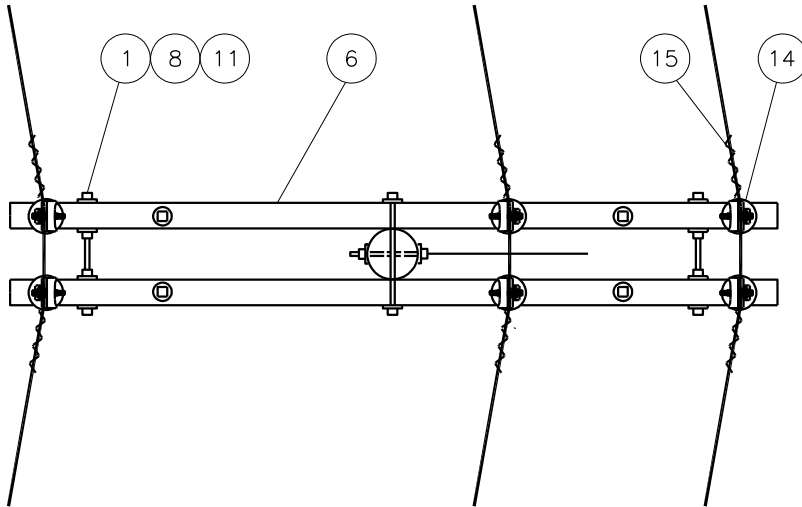
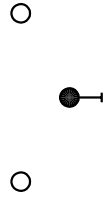
BACK TO INDEX PAGE

SaskPower - DISTRIBUTION STANDARDS

APPROVAL L MOEN	DESIGN CHK O FRANCIS	DRN. LM CHKD.	3Ø MEDIUM ANGLE DEFLECTIONS OF 11 TO 30 DEGREES TULIP AAC
DATE OF ISSUE: 08/13/2020	DRAWING NO: A-14-152	SHEET 1 OF 2 REV. 0	

BACK TO INDEX PAGE

STRUCTURE USED HERE



NOTES:

1. REQUIRES 4/45' FOR RESIDENTIAL (38M RS, 46 MAX). REQUIRES 3/50' FOR INDUSTRIAL (60M RS, 68 MAX).
2. ALLOWS CLUSTER MOUNTED 600KG TRANSFORMERS OR 910KG 3 PHASE TRANSFORMER/APPARATUS. LARGER OR HEAVIER APPARATUS REQUIRES UPCLASSED POLE.
3. DOWNGUY IS TYPE "B".
4. SIDE WALK AND SHORT GUYING ARE NOT PERMISSIBLE.
5. GUYING MATERIAL IS NOT INCLUDED. REFER TO A-32.

SCALE: N.T.S. ALL DIMENSIONS ARE IN MILLIMETRES UNLESS OTHERWISE INDICATED

A14_152_02

SaskPower – DISTRIBUTION STANDARDS

APPROVAL L.MOEN	DESIGN CHK. L.MOEN	DRN.E.GOTANA CHKD. 2020-03-10
--------------------	-----------------------	-------------------------------------

3Ø MEDIUM ANGLE
DEFLECTIONS OF 11 TO 30 DEGREES
TULIP AAC

DATE OF ISSUE : 08/13/2020	DRAWING NO. A-14-152	SHEET 2 of 2	REV. -
----------------------------	----------------------	--------------	--------

BILL OF MATERIAL

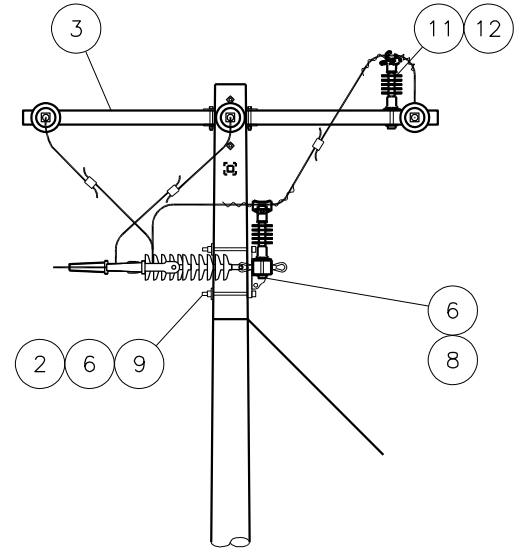
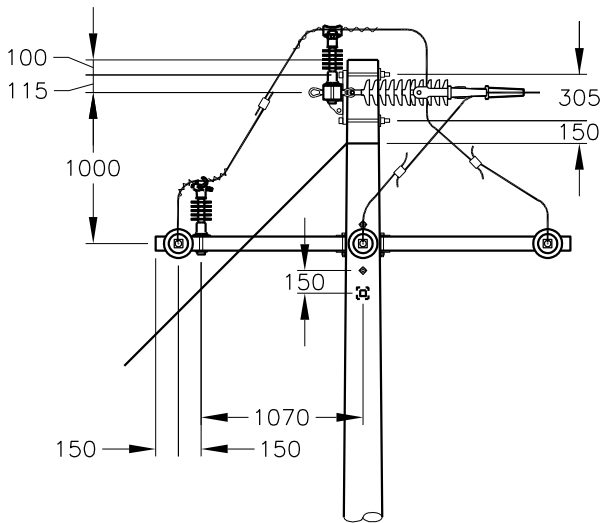
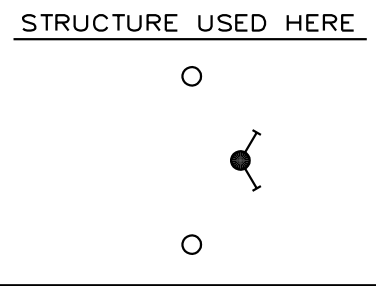
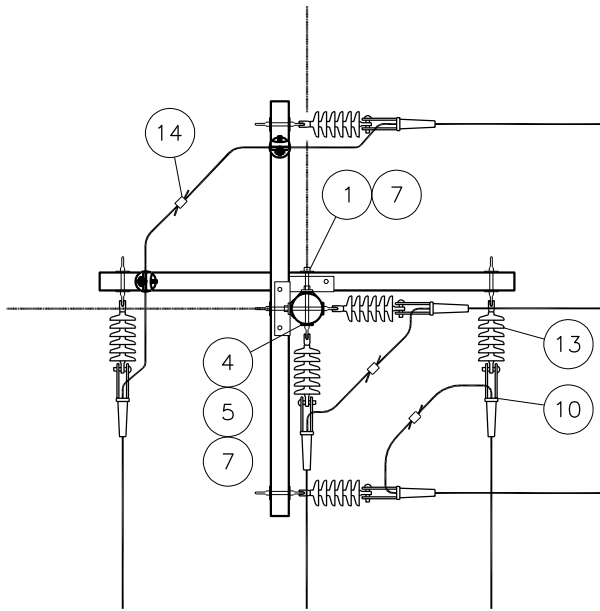
ITEM NO.	CODE NO.	QUANTITY	DESCRIPTION
1	1 09 20	2	BOLT – DOUBLE ARMING – 5/8" X 20"
2	1 14 12	4	BOLT – MACHINE – 3/4" X 12"
3	1 29 38	2	CROSSARM – COMPOSITE – 4-5/8" X 3-5/8" x 9'
4	1 50 00	2	NUT – EYE – 5/8"
5	1 93 27	2	WASHER – DOUBLE LOCK – 5/8"
6	1 93 28	6	WASHER – DOUBLE LOCK – 3/4"
7	1 93 45	4	WASHER – SQUARE – 4" X 4" X 11/16" HOLE
8	1 93 46	2	WASHER – SQUARE – 4" X 4" X 15/16" HOLE
9	1 93 96	4	WASHER – CURVED – 3" X 3" X 13/16" HOLE
10	2 02 18	6	DEADEND – BOLTED
11	2 19 92	2	STUD – LINE POST INSULATOR
12	2 20 00	2	INSULATOR – LINE POST
13	2 29 24	6	DEADEND – POLYMER – CLEVIS AND TONGUE ENDS
14	5 09 48	3	CONNECTOR – COMPRESSION

BACK TO INDEX PAGE

SaskPower - DISTRIBUTION STANDARDS

APPROVAL L MOEN	DESIGN CHK O FRANCIS	DRN. LM CHKD.	3Ø HEAVY ANGLE / CORNERS DEFLECTIONS OF 31 TO 90 DEGREES TULIP AAC
DATE OF ISSUE: 08/13/2020	DRAWING NO: A-14-153	SHEET 1 OF 2 REV. 0	

BACK TO INDEX PAGE



NOTES:

1. REQUIRES 4/50' FOR RESIDENTIAL (38M RS, 46M MAX). REQUIRES 3/55' FOR INDUSTRIAL (60M RS, 68M MAX).
2. TRANSFORMERS AND APPARATUS ARE NOT PERMITTED ON THE POLE.
3. DOWNGUY IS TYPE "B". SIDEWALK AND SHORT GUYING IS NOT PERMITTED.
4. GUYING MATERIAL IS NOT INCLUDED. REFER TO A-32.

SCALE: N.T.S. ALL DIMENSIONS ARE IN MILLIMETRES UNLESS OTHERWISE INDICATED

A14_153_02

SaskPower – DISTRIBUTION STANDARDS				
APPROVAL L.MOEN	DESIGN CHK. L.MOEN	DRN.E.GOTANA CHKD.	3Ø HEAVY ANGLE / CORNERS DEFLECTIONS OF 31 TO 90 DEGREES TULIP AAC	
		2020-03-10		
DATE OF ISSUE : 08/13/2020		DRAWING NO. A-14-153	SHEET 2 of 2	REV. -

BILL OF MATERIAL

ITEM NO.	CODE NO.	QUANTITY	DESCRIPTION
1	1 09 20	1	BOLT – DOUBLE ARMING – 5/8” X 20”
2	1 14 12	2	BOLT – MACHINE – 3/4” X 12”
3	1 29 38	1	CROSSARM – COMPOSITE – 4-5/8” X 3-5/8” X 9’
4	1 50 00	1	NUT – EYE – 5/8”
5	1 93 27	1	WASHER – DOUBLE LOCK – 5/8”
6	1 93 28	2	WASHER – DOUBLE LOCK – 3/4”
7	1 93 42	1	WASHER – SQUARE – 2 1/4” X 2 1/4” X 13/16” HOLE
8	1 93 45	1	WASHER – SQUARE – 4” X 4” X 11/16” HOLE
9	1 93 96	2	WASHER – CURVED – 3” X 3” X 13/16” HOLE
10	2 02 18	3	DEADEND – BOLTED
11	2 29 24	3	DEADEND – POLYMER – CLEVIS AND TONGUE ENDS

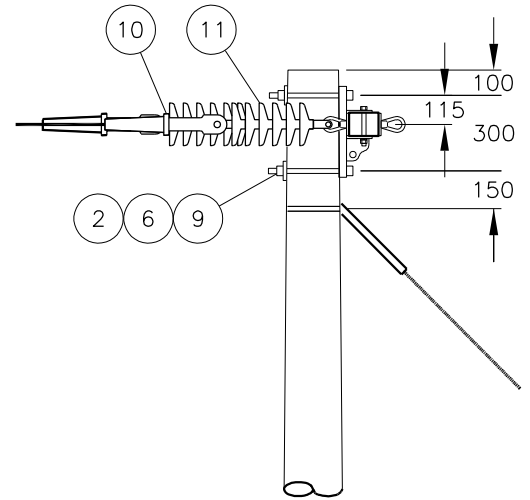
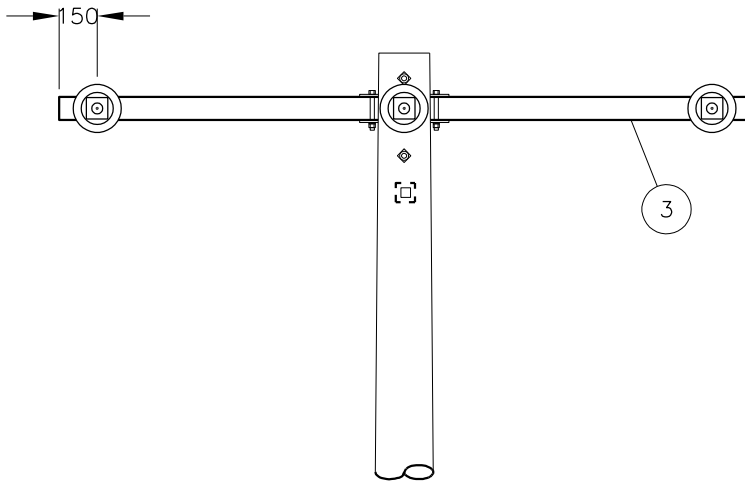
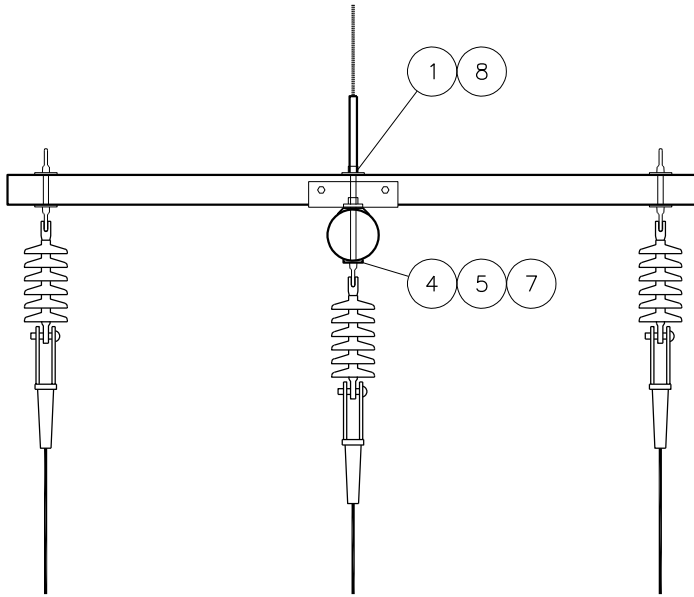
BACK TO INDEX PAGE

SaskPower - DISTRIBUTION STANDARDS

APPROVAL L MOEN	DESIGN CHK O FRANCIS	DRN. LM CHKD.	3Ø DEAD END TULIP AAC
DATE OF ISSUE: 08/13/2020	DRAWING NO: A-14-154	SHEET 1 OF 2 REV. 0	

BACK TO INDEX PAGE

STRUCTURE USED HERE



NOTES:

1. REQUIRES 2/45' FOR RESIDENTIAL (38M RS 46M MAX). REQUIRES 1/50' FOR INDUSTRIAL (60M RS, 60M MAX FOR THIS STRUCTURE).
2. ALLOWS CLUSTER MOUNTED 600KG TRANSFORMERS OR SINGLE 910KG 3 PHASE TRANSFORMER APPARATUS. LARGER OR HEAVIER APPARATUS REQUIRES UPCLASSED POLE.
3. DOWNGUY IS TYPE "B". SIDEWALK AND SHORT GUYING ARE NOT PERMITTED.
4. GUYING MATERIAL IS NOT INCLUDED. REFER TO A-32.

SCALE: N.T.S. ALL DIMENSIONS ARE IN MILLIMETRES UNLESS OTHERWISE INDICATED

A14_154_02

SaskPower – DISTRIBUTION STANDARDS

APPROVAL
L.MOEN

DESIGN CHK.
L.MOEN

DRN.E.GOTANA
CHKD.

2020-03-10

3Ø DEAD END
TULIP AAC

DATE OF ISSUE : 08/13/2020

DRAWING NO. A-14-154

SHEET 2 of 2

REV. -

BILL OF MATERIAL

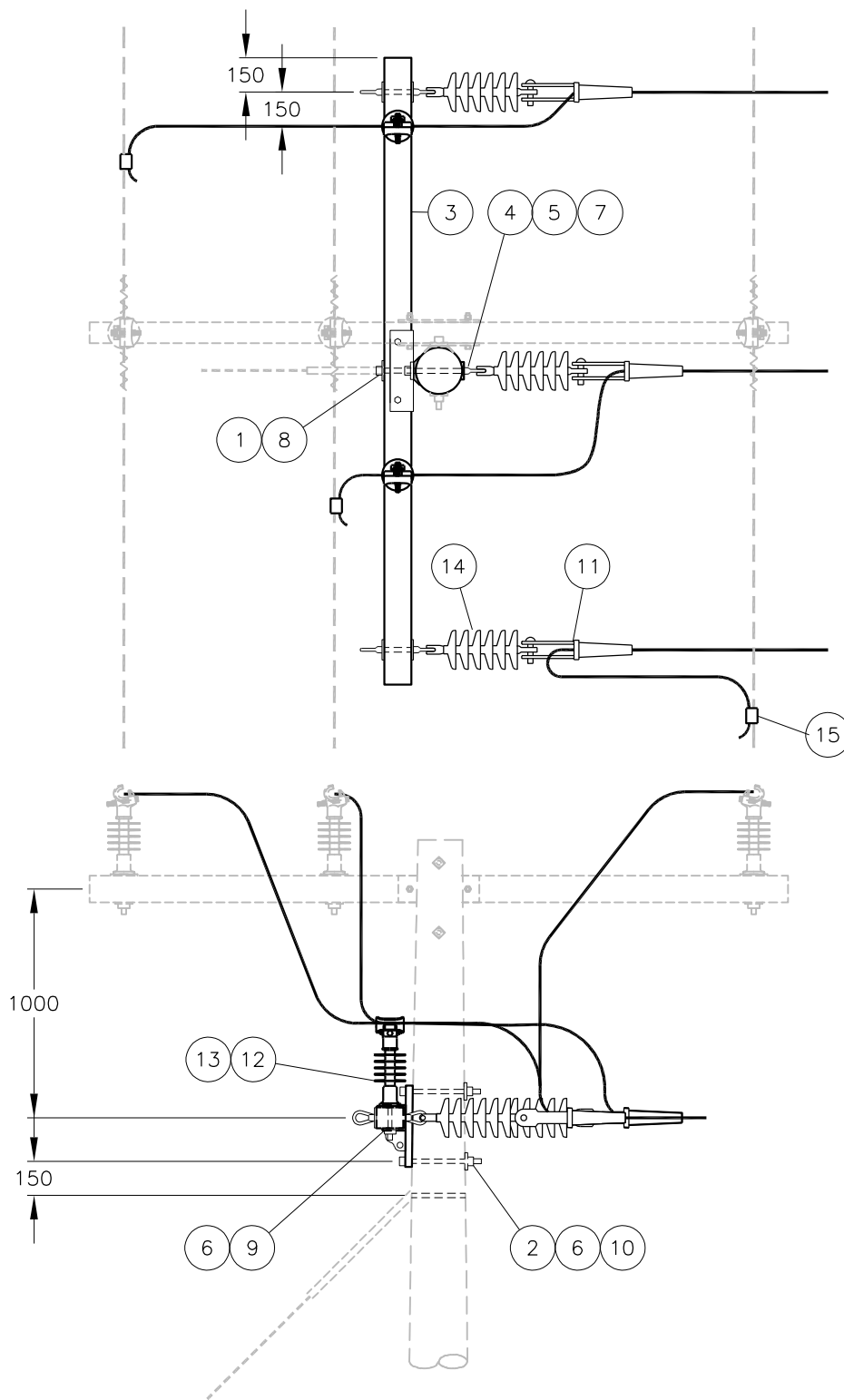
ITEM NO.	CODE NO.	QUANTITY	DESCRIPTION
1	1 09 20	1	BOLT – DOUBLE ARMING – 5/8” X 20”
2	1 14 12	2	BOLT – MACHINE – 3/4” X 12”
3	1 29 38	1	CROSSARM – COMPOSITE – 4-5/8” X 3-5/8” X 9’
4	1 50 00	1	NUT – EYE – 5/8”
5	1 93 27	1	WASHER – DOUBLE LOCK – 5/8”
6	1 93 28	4	WASHER – DOUBLE LOCK – 3/4”
7	1 93 42	1	WASHER – SQUARE – 2 1/4” X 2 1/4” X 13/16” HOLE
8	1 93 45	1	WASHER – SQUARE – 4” X 4” X 11/16” HOLE
9	1 93 46	2	WASHER – SQUARE – 4” X 4” X 15/16” HOLE
10	1 93 96	2	WASHER – CURVED – 3” X 3” X 13/16” HOLE
11	2 02 18	3	DEADEND – BOLTED
12	2 19 92	2	STUD – INSULATOR
13	2 20 00	2	INSULATOR – LINE POST
14	2 29 24	3	DEADEND – POLYMER – CLEVIS AND TONGUE ENDS
15	5 09 48	3	CONNECTOR – COMPRESSION

BACK TO INDEX PAGE

SaskPower - DISTRIBUTION STANDARDS

APPROVAL L MOEN	DESIGN CHK O FRANCIS	DRN. LM CHKD.	3Ø TAP OFF TULIP AAC
DATE OF ISSUE: 08/13/2020	DRAWING NO: A-14-155	SHEET 1 OF 2	

BACK TO INDEX PAGE



STRUCTURE USED HERE

○

—●○

○

NOTES:

1. REQUIRES A MINIMUM CLASS 3 FOR RESIDENTIAL (46M MAX TAP) OR CLASS 2 FOR INDUSTRIAL (60M MAX TAP).
2. TRANSFORMERS AND APPARATUS ARE NOT PERMITTED ON THE POLE.
3. DOWNGUY IS TYPE "B". SIDEWALK AND SHORT GUYING ARE NOT PERMITTED.
4. GUYING MATERIAL IS NOT INCLUDED. REFER TO A-32.

SCALE: N.T.S. ALL DIMENSIONS ARE IN MILLIMETRES UNLESS OTHERWISE INDICATED

A14_155_02

SaskPower – DISTRIBUTION STANDARDS			
APPROVAL L.MOEN	DESIGN CHK. L.MOEN	DRN.E.GOTANA CHKD.	3∅ TAP OFF TULIP AAC
		2020-03-10	
DATE OF ISSUE : 08/13/2020		DRAWING NO. A-14-155	SHEET 2 of 2
			REV. -

BILL OF MATERIAL

ITEM NO.	CODE NO.	QUANTITY	DESCRIPTION
1	1 12 06	4	BOLT – MACHINE – 1/2" X 6"
2	1 13 12	2	BOLT – MACHINE – 5/8" X 12"
3	1 13 16	2	BOLT – MACHINE – 5/8" X 16"
4	1 18 72	2	BRACE – ANGLE – 72"
5	1 29 10	2	CROSSARM – WOOD – 4" X 5" X 10'-0"
6	1 93 26	4	WASHER – DOUBLE LOCK – 1/2"
7	1 93 27	4	WASHER – DOUBLE LOCK – 5/8"
8	1 93 28	6	WASHER – DOUBLE LOCK – 3/4"
9	1 93 30	4	WASHER – ROUND – 1-3/8" X 9/16" HOLE
10	1 93 42	6	WASHER – SQUARE – 2-1/4" X 2-1/4" X 13/16" HOLE
11	1 93 46	6	WASHER – SQUARE – 4" X 15/16" HOLE
12	2 19 92	6	STUD – LINE POST INSULATOR
13	2 20 00	6	INSULATOR – LINE POST
14	2 59 69	6	ARMOUR ROD – TULIP

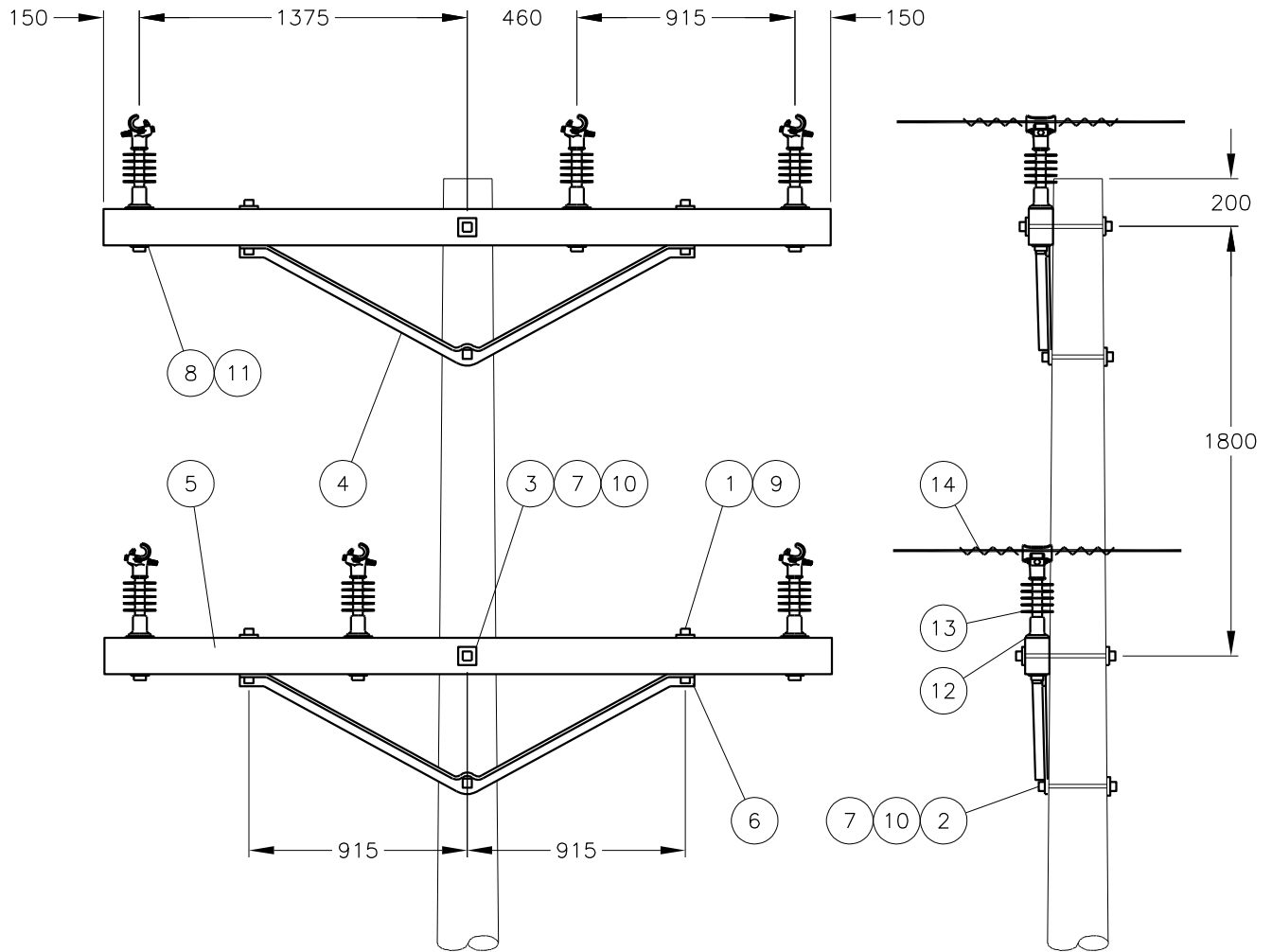
BACK TO INDEX PAGE

SaskPower - DISTRIBUTION STANDARDS

APPROVAL L MOEN	DESIGN CHK O FRANCIS	DRN. LM CHKD.	DOUBLE CIRCUIT 3Ø TANGENT DEFLECTIONS UP TO 2 DEGREES TULIP AAC
DATE OF ISSUE: 08/13/2020	DRAWING NO: A-14-160	SHEET 1 OF 2 REV. 0	

BACK TO INDEX PAGE

STRUCTURE USED HERE



NOTES:

1. DEFLECTIONS LIMITED TO 2 DEGREES.
2. REQUIRES 1/55' POLE RESIDENTIAL (38M RS, 46M MAX). REQUIRES 1/60' FOR INDUSTRIAL (60M RS, 60M MAX).
3. ALLOWS CLUSTER MOUNTED 600KG TRANSFORMERS OR SINGLE 910KG 3 PHASE TRANSFORMER/APPARATUS. LARGER OR HEAVIER APPARATUS REQUIRES UPCLASSED POLE.

SCALE: N.T.S. ALL DIMENSIONS ARE IN MILLIMETRES UNLESS OTHERWISE INDICATED

A14_160_02

SaskPower – DISTRIBUTION STANDARDS

APPROVAL L.MOEN	DESIGN CHK. L.MOEN	DRN.E.GOTANA CHKD. 2020-03-10	DOUBLE CIRCUIT 3Ø TANGENT DEFLECTIONS UP TO 2 DEGREES TULIP AAC
DATE OF ISSUE: 08/13/2020		DRAWING NO. A-14-160	
		SHEET 2 of 2	REV. -

BILL OF MATERIAL

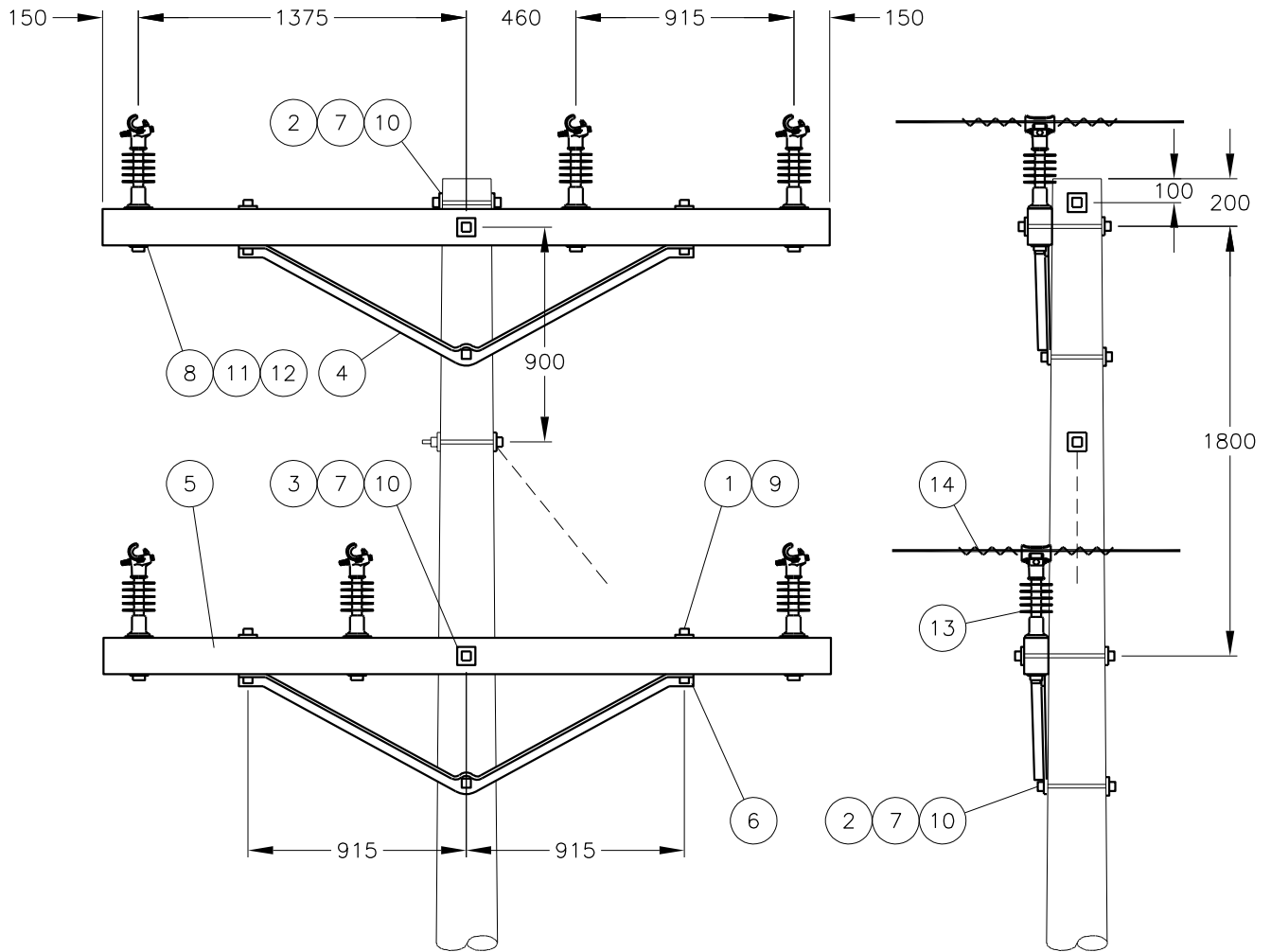
ITEM NO.	CODE NO.	QUANTITY	DESCRIPTION
1	1 12 06	4	BOLT – MACHINE – 1/2" X 6"
2	1 13 12	3	BOLT – MACHINE – 5/8" X 12"
3	1 13 16	2	BOLT – MACHINE – 5/8" X 16"
4	1 18 72	2	BRACE – ANGLE – 72"
5	1 29 10	2	CROSSARM – WOOD – 4" X 5" X 10'-0"
6	1 93 26	4	WASHER – DOUBLE LOCK – 1/2"
7	1 93 27	5	WASHER – DOUBLE LOCK – 5/8"
8	1 93 28	6	WASHER – DOUBLE LOCK – 3/4"
9	1 93 30	4	WASHER – ROUND – 1-3/8" X 9/16" HOLE
10	1 93 42	8	WASHER – SQUARE – 2-1/4" X 2-1/4" X 13/16" HOLE
11	1 93 46	6	WASHER – SQUARE – 4" X 15/16" HOLE
12	2 19 92	6	STUD – LINE POST INSULATOR
13	2 20 00	6	INSULATOR – LINE POST
14	2 59 69	6	ARMOUR ROD – TULIP

BACK TO INDEX PAGE

SaskPower - DISTRIBUTION STANDARDS

APPROVAL L MOEN	DESIGN CHK O FRANCIS	DRN. LM CHKD.	DOUBLE CIRCUIT 3Ø LIGHT ANGLE DEFLECTIONS OF 3 TO 10 DEGREES TULIP AAC
DATE OF ISSUE: 08/13/2020	DRAWING NO: A-14-161	SHEET 1 OF 2 REV. 0	

STRUCTURE USED HERE



NOTES:

1. DEFLECTIONS OF 3 TO 10 DEGREES.
2. REQUIRES 3/55' FOR RESIDENTIAL (38M RS, 46M MAX). REQUIRES 1/60' FOR INDUSTRIAL (60M RS, 68M MAX).
3. ALLOWS CLUSTER MOUNTED 600KG TRANSFORMERS OR SINGLE 910KG 3 PHASE TRANSFORMER/APPARATUS. LARGER OR HEAVIER APPARATUS REQUIRES UPCLASSED POLE.
4. DOWN GUY IS TYPE "B". SHORT GUYING IS NOT PERMISSIBLE.
5. GUYING MATERIAL IS NOT INCLUDED. REFER TO A-32.

SCALE: N.T.S. ALL DIMENSIONS ARE IN MILLIMETRES UNLESS OTHERWISE INDICATED

A14_161_02

SaskPower – DISTRIBUTION STANDARDS				
APPROVAL	DESIGN CHK.	DRN.E.GOTANA	DOUBLE CIRCUIT 3 ϕ LIGHT ANGLE DEFLECTIONS OF 3 TO 10 DEGREES TULIP AAC	
L.MOEN	L.MOEN	CHKD.		
		2020-03-10		
DATE OF ISSUE : 08/13/2020		DRAWING NO. A-14-161	SHEET 2 of 2	REV. -

BILL OF MATERIAL

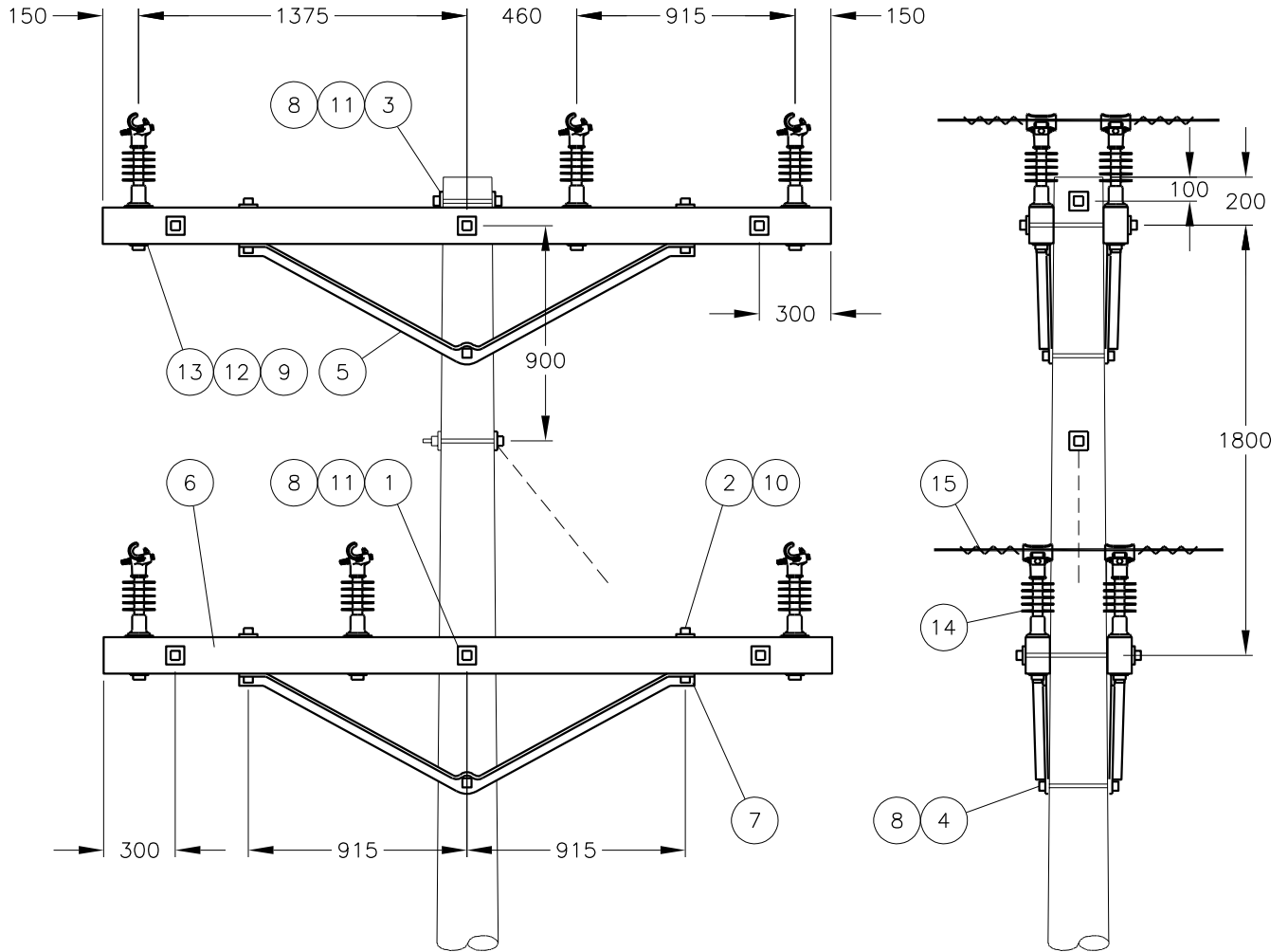
ITEM NO.	CODE NO.	QUANTITY	DESCRIPTION
1	1 09 20	6	BOLT – DOUBLE ARMING – 5/8" X 20"
2	1 12 06	8	BOLT – MACHINE – 1/2" X 6"
3	1 13 12	3	BOLT – MACHINE – 5/8" X 12"
4	1 13 16	2	BOLT – MACHINE – 5/8" X 16"
5	1 18 72	4	BRACE – ANGLE – 72"
6	1 29 10	4	CROSSARM – WOOD – 4" X 5" X 10'-0"
7	1 93 26	8	WASHER – DOUBLE LOCK – 1/2"
8	1 93 27	15	WASHER – DOUBLE LOCK – 5/8"
9	1 93 28	12	WASHER – DOUBLE LOCK – 3/4"
10	1 93 30	8	WASHER – ROUND – 1 3/8" X 9/16" HOLE
11	1 93 42	22	WASHER – SQUARE – 2 1/4" X 2 1/4" X 13/16" HOLE
12	1 93 46	12	WASHER – SQUARE – 4" X 15/16" HOLE
13	2 19 92	12	STUD – LINE POST INSULATOR
14	2 20 00	12	INSULATOR – LINE POST
15	2 59 69	6	ARMOUR ROD – TULIP

BACK TO INDEX PAGE

SaskPower - DISTRIBUTION STANDARDS

APPROVAL L MOEN	DESIGN CHK O FRANCIS	DRN. LM CHKD.	DOUBLE CIRCUIT 3Ø MEDIUM ANGLE DEFLECTIONS OF 11 TO 30 DEGREES TULIP AAC
DATE OF ISSUE: 08/13/2020	DRAWING NO: A-14-162	SHEET 1 OF 2	

STRUCTURE USED HERE



NOTES:

1. DEFLECTIONS OF 11 TO 30 DEGREES.
2. REQUIRES 3/55' FOR RESIDENTIAL (38M RS, 46M MAX). REQUIRES 2/60' FOR INDUSTRIAL (60M RS, 68M MAX).
3. ALLOWS CLUSTER MOUNTED 600KG TRANSFORMERS OR SINGLE 910KG 3 PHASE TRANSFORMER/APPARATUS. LARGER OR HEAVIER APPARATUS REQUIRES UPCLASSED POLE.
4. DOWN GUY IS TYPE "B". SIDEWALK AND SHORT GUYING ARE NOT PERMISSIBLE.
5. GUYING MATERIAL IS NOT INCLUDED. REFER TO A-32.

SCALE: N.T.S. ALL DIMENSIONS ARE IN MILLIMETRES UNLESS OTHERWISE INDICATED

A14_162_02

SaskPower – DISTRIBUTION STANDARDS				
APPROVAL	DESIGN CHK.	DRN.E.GOTANA	DOUBLE CIRCUIT 3 ϕ MEDIUM ANGLE DEFLECTIONS OF 11 TO 30 DEGREES TULIP AAC	
L.MOEN	L.MOEN	CHKD.		
		2020-03-10		
DATE OF ISSUE : 08/13/2020		DRAWING NO. A-14-162	SHEET 2 of 2	REV. -

BILL OF MATERIAL

ITEM NO.	CODE NO.	QUANTITY	DESCRIPTION
1	1 09 20	4	BOLT – DOUBLE ARMING – 5/8" X 20"
2	1 14 12	8	BOLT – MACHINE – 3/4" X 12"
3	1 29 38	4	CROSSARM – COMPOSITE – 4-5/8" X 3-5/8" x 9'
4	1 50 00	4	NUT – EYE – 5/8"
5	1 93 27	4	WASHER – DOUBLE LOCK – 5/8"
6	1 93 28	12	WASHER – DOUBLE LOCK – 3/4"
7	1 93 45	8	WASHER – SQUARE – 4" X 4" X 11/16" HOLE
8	1 93 46	4	WASHER – SQUARE – 4" X 4" X 15/16" HOLE
9	1 93 96	8	WASHER – CURVED – 3" X 3" X 13/16" HOLE
10	2 02 18	12	DEADEND – BOLTED
11	2 19 92	4	STUD – LINE POST INSULATOR
12	2 20 00	4	INSULATOR – LINE POST
13	2 29 24	12	DEADEND – POLYMER – CLEVIS AND TONGUE ENDS
14	5 09 48	6	CONNECTOR – COMPRESSION

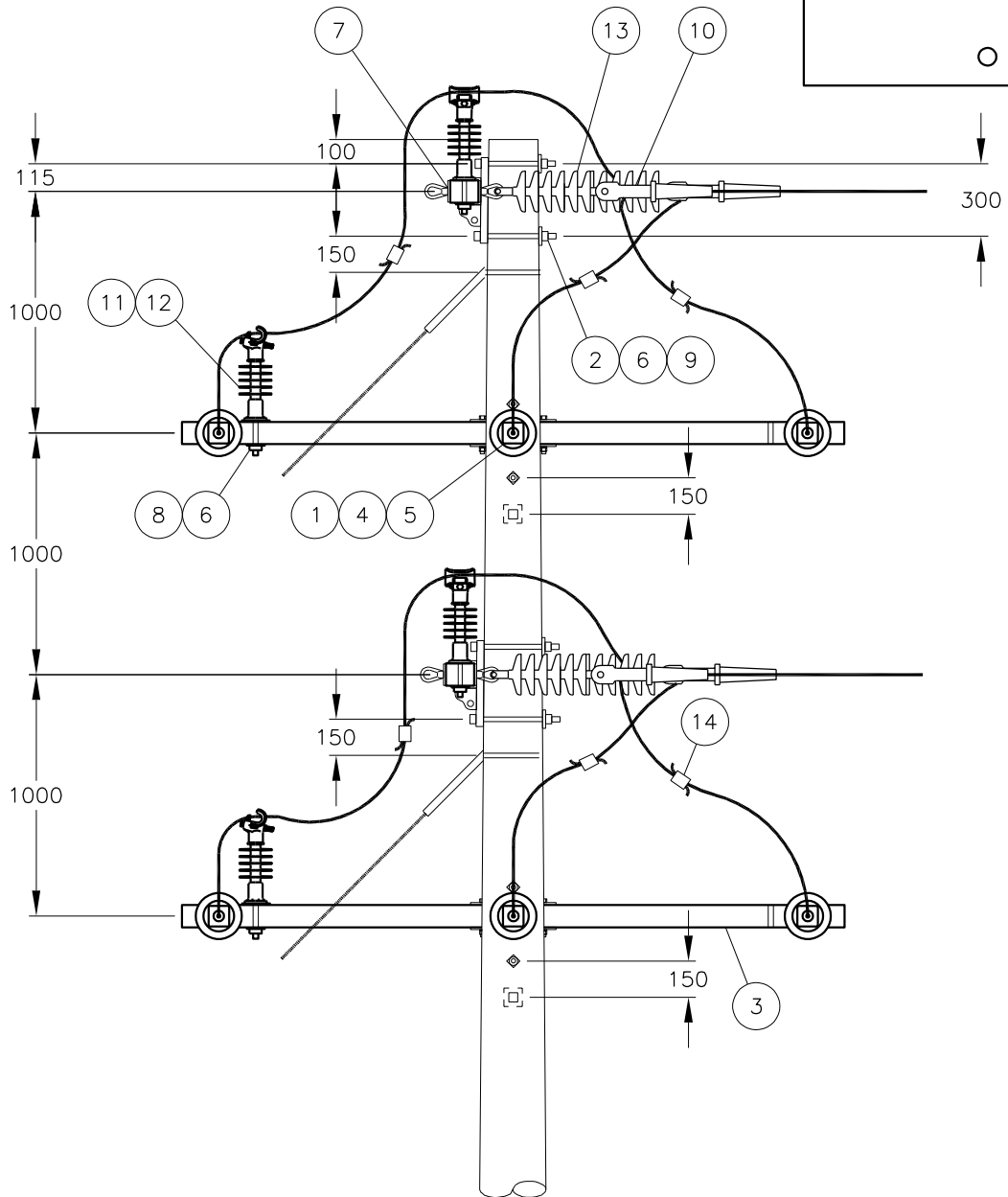
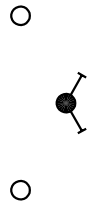
BACK TO INDEX PAGE

SaskPower - DISTRIBUTION STANDARDS

APPROVAL L MOEN	DESIGN CHK O FRANCIS	DRN. LM CHKD.	DOUBLE CIRCUIT 3Ø HEAVY ANGLE DEFLECTIONS OF 31 TO 90 DEGREES TULIP AAC
DATE OF ISSUE: 08/13/2020	DRAWING NO: A-14-163	SHEET 1 OF 2	

BACK TO INDEX PAGE

STRUCTURE USED HERE



NOTES:

1. REQUIRES 4/50' POLE FOR RESIDENTIAL (38M RULING SPAN). REQUIRES 4/55' FOR INDUSTRIAL (60M RULING SPAN).
2. RESIDENTIAL: MAX SPAN FOR ALL ANGLES IS 46M. INDUSTRIAL: MAX SPAN FOR 31-45 DEGREES IS 56M. MAX SPAN FOR 46-90 DEGREES IS 68M.
3. TRANSFORMERS AND APPARATUS ARE NOT PERMITTED ON THE POLE.
4. DOWN GUY IS TYPE "B". SIDEWALK AND SHORT GUYING ARE NOT PERMISSIBLE.
5. GUYING MATERIAL IS NOT INCLUDED. REFER TO A-32.

SCALE: N.T.S. ALL DIMENSIONS ARE IN MILLIMETRES UNLESS OTHERWISE INDICATED

A14_163_02

SaskPower – DISTRIBUTION STANDARDS

APPROVAL L.MOEN	DESIGN CHK. L.MOEN	DRN.E.GOTANA CHKD. 2020-03-10	DOUBLE CIRCUIT 3Ø HEAVY ANGLE DEFLECTIONS OF 31 TO 90 DEGREES TULIP AAC
DATE OF ISSUE : 08/13/2020		DRAWING NO. A-14-163	
		SHEET 2 of 2	REV. -

BILL OF MATERIAL

ITEM NO.	CODE NO.	QUANTITY	DESCRIPTION
1	1 09 20	2	BOLT – DOUBLE ARMING – 5/8” X 20”
2	1 14 12	4	BOLT – MACHINE – 3/4” X 12”
3	1 29 38	2	CROSSARM – COMPOSITE – 4-5/8” X 3-5/8” X 9’
4	1 50 00	2	NUT – EYE – 5/8”
5	1 93 27	2	WASHER – DOUBLE LOCK – 5/8”
6	1 93 28	4	WASHER – DOUBLE LOCK – 3/4”
7	1 93 42	2	WASHER – SQUARE – 2 1/4” X 2 1/4” X 13/16” HOLE
8	1 93 45	2	WASHER – SQUARE – 4” X 4” X 11/16” HOLE
9	1 93 96	4	WASHER – CURVED – 3” X 3” X 13/16” HOLE
10	2 02 18	6	DEADEND – BOLTED
11	2 29 24	6	DEADEND – POLYMER – CLEVIS AND TONGUE ENDS

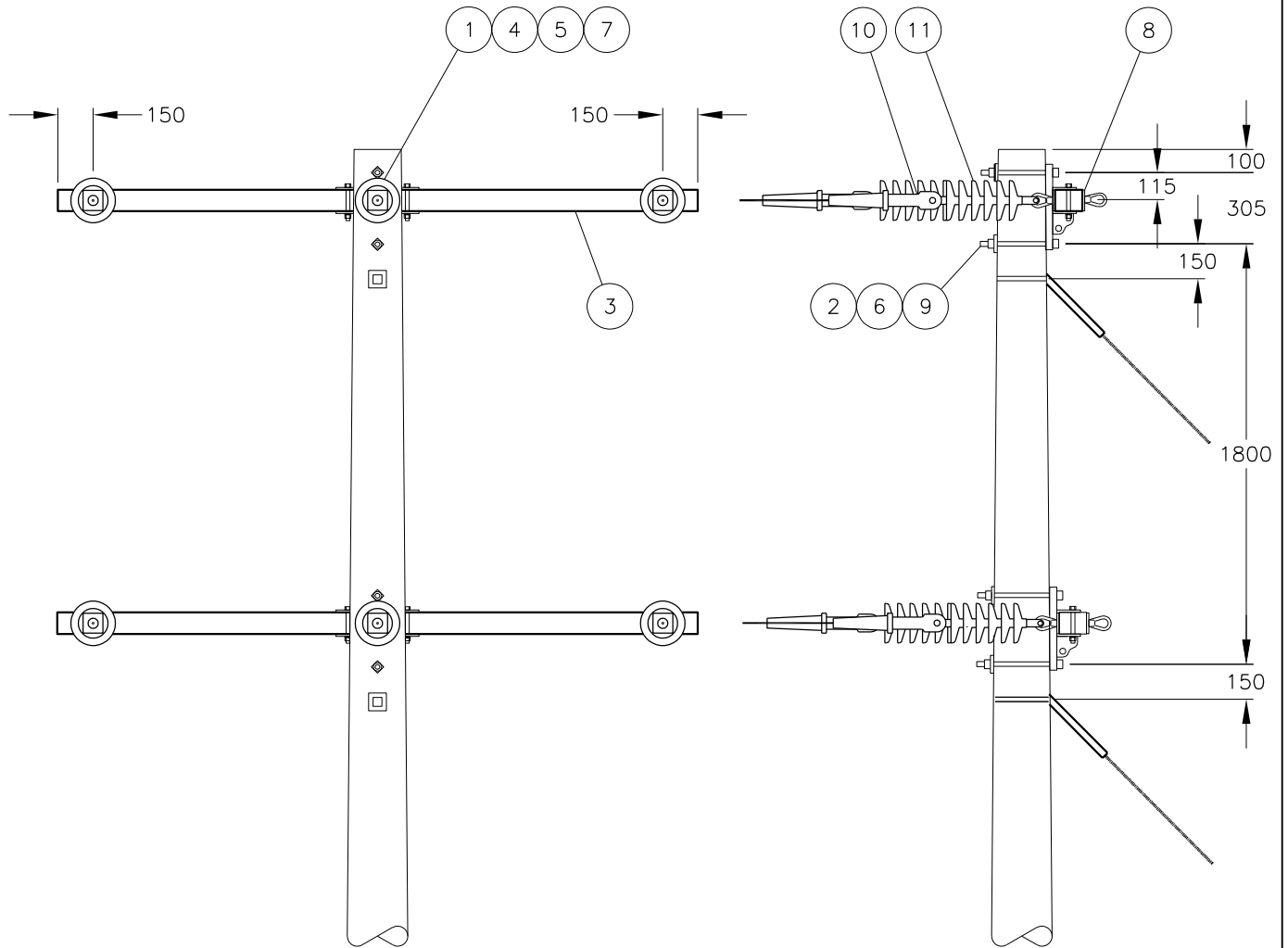
BACK TO INDEX PAGE

SaskPower - DISTRIBUTION STANDARDS

APPROVAL L MOEN	DESIGN CHK O FRANCIS	DRN. LM CHKD.	DOUBLE CIRCUIT 3Ø DEAD END TULIP AAC
DATE OF ISSUE: 08/13/2020		DRAWING NO: A-14-164	

BACK TO INDEX PAGE

STRUCTURE USED HERE



NOTES:

1. REQUIRES 1/55' POLE FOR RESIDENTIAL (38M RS, 46M MAX). REQUIRES 1/55' FOR INDUSTRIAL (60M RS, 60M MAX).
2. ALLOWS CLUSTER MOUNTED 600KG TRANSFORMERS OR SINGLE 910KG 3 PHASE TRANSFORMER/APPARATUS. LARGER OR HEAVIER APPARATUS REQUIRES UPCLASSED POLE.
3. DOWNGUY IS TYPE "B". SIDEWALK AND SHORT GUYING ARE NOT PERMISSIBLE.
4. GUYING MATERIAL IS NOT INCLUDED. REFER TO A-32.

SCALE: N.T.S. ALL DIMENSIONS ARE IN MILLIMETRES UNLESS OTHERWISE INDICATED

A14_164_02

SaskPower – DISTRIBUTION STANDARDS

APPROVAL L.MOEN	DESIGN CHK. L.MOEN	DRN.E.GOTANA CHKD. 2020-03-10	DOUBLE CIRCUIT 3 ϕ DEAD END TULIP AAC
DATE OF ISSUE : 08/13/2020		DRAWING NO. A-14-164	
		SHEET 2 of 2	REV. -

BILL OF MATERIAL

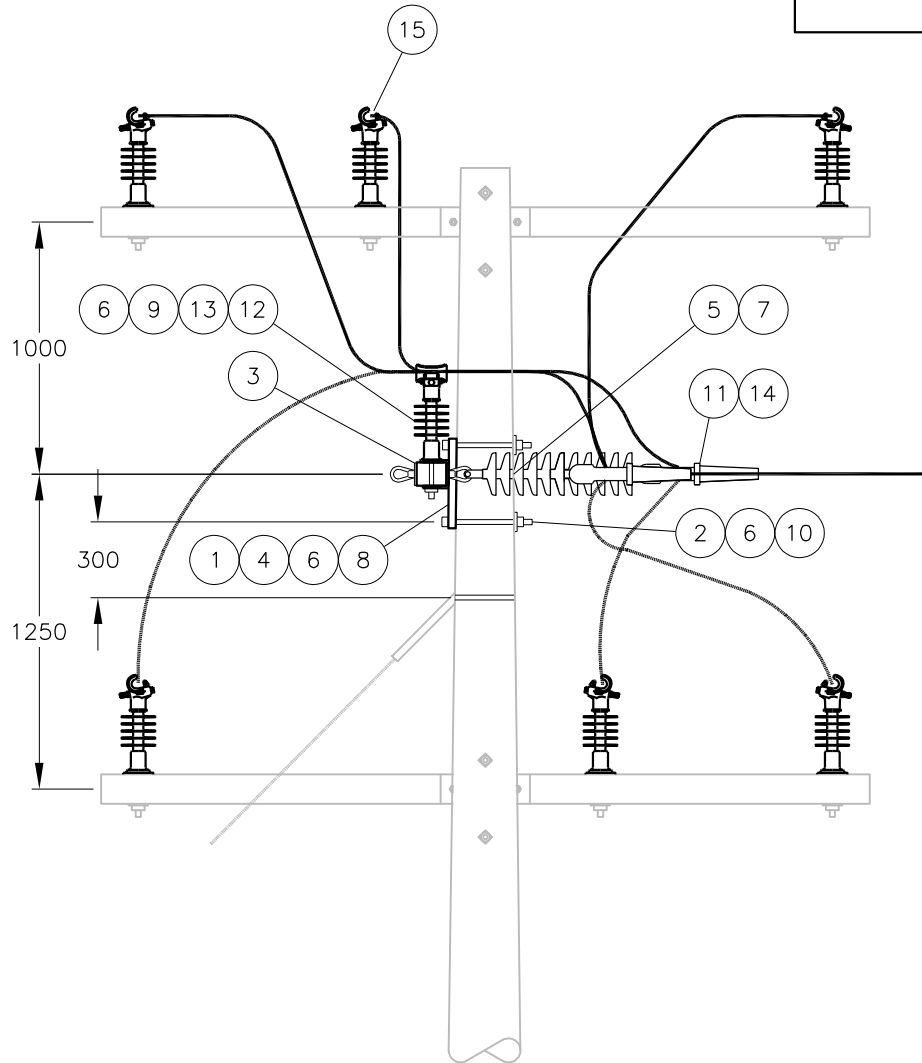
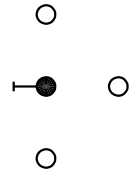
ITEM NO.	CODE NO.	QUANTITY	DESCRIPTION
1	1 09 20	1	BOLT – DOUBLE ARMING – 5/8” X 20”
2	1 14 12	2	BOLT – MACHINE – 3/4” X 12”
3	1 29 38	1	CROSSARM – COMPOSITE – 4-5/8” X 3-5/8” X 9’
4	1 50 00	1	NUT – EYE – 5/8”
5	1 93 27	1	WASHER – DOUBLE LOCK – 5/8”
6	1 93 28	4	WASHER – DOUBLE LOCK – 3/4”
7	1 93 42	1	WASHER – SQUARE – 2 1/4” X 2 1/4” X 13/16” HOLE
8	1 93 45	1	WASHER – SQUARE – 4” X 4” X 11/16” HOLE
9	1 93 46	2	WASHER – SQUARE – 4” X 4” X 15/16” HOLE
10	1 93 96	2	WASHER – CURVED – 3” X 3” X 13/16” HOLE
11	2 02 18	3	DEADEND – BOLTED
12	2 19 92	2	STUD – INSULATOR
13	2 20 00	2	INSULATOR – LINE POST
14	2 29 24	3	DEADEND – POLYMER – CLEVIS AND TONGUE ENDS
15	5 09 48	3	CONNECTOR – COMPRESSION

BACK TO INDEX PAGE

SaskPower - DISTRIBUTION STANDARDS

APPROVAL L MOEN	DESIGN CHK O FRANCIS	DRN. LM CHKD.	DOUBLE CIRCUIT 3Ø TAP OFF TULIP AAC
DATE OF ISSUE: 08/13/2020	DRAWING NO: A-14-165	SHEET 1 OF 2	

STRUCTURE USED HERE



NOTES:

1. REQUIRES A MINIMUM CLASS 1 FOR RESIDENTIAL (46M MAX TAP) OR CLASS H1 FOR INDUSTRIAL (60M MAX TAP).
2. TRANSFORMERS AND APPARATUS ARE NOT PERMITTED ON THE POLE.
3. DOWNGUY IS TYPE "B". SIDEWALK AND SHORT GUYING ARE NOT PERMISSIBLE.
4. GUYING MATERIAL IS NOT INCLUDED. REFER TO A-32.

SCALE: N.T.S. ALL DIMENSIONS ARE IN MILLIMETRES UNLESS OTHERWISE INDICATED

A14_165_02

SaskPower – DISTRIBUTION STANDARDS

APPROVAL L.MOEN	DESIGN CHK. L.MOEN	DRN.E.GOTANA CHKD. 2020-03-10	DOUBLE CIRCUIT 3Ø TAP OFF TULIP AAC
DATE OF ISSUE : 08/13/2020		DRAWING NO. A-14-165	
		SHEET 2 of 2	REV. -