

RURAL DISTRIBUTION

DRAWING NUMBER	SHT.	DRAWING TITLE	DWG REV.	BOM REV.
B-12-00	1 - 2	GENERAL INFORMATION	A / A	-
B-12-10	1 - 2	SINGLE-PHASE, TAKE-OFF STRUCTURE	E	F
B-12-11	1 - 2	SINGLE-PHASE, DOUBLE TAKE-OFF STRUCTURE	E	F
B-12-12	1 - 2	REVERSE FROM U/G TO O/H TAKE-OFF ON RADIAL	D	E
B-12-13	1 - 2	SINGLE-PHASE, OVERHEAD STRUCTURE TO FEED COMMUNITIES FROM A RUD LOOP	A	C
B-12-15	1 - 2	THREE-PHASE, TAKE-OFF STRUCTURE	E	F
B-12-20	1 - 2	SINGLE-PHASE, RADIAL FEED CABLE STRUCTURE WITH EXISTING POLE-MOUNTED TRANSFORMER	G	H
B-12-21	1 - 2	SINGLE-PHASE, LOOP FEED CABLE STRUCTURE WITH EXISTING POLE-MOUNTED TRANSFORMER	E	F
B-12-22	1 - 2	RUD SECONDARY TAKE-OFF STRUCTURE	E	E
B-12-23	1 - 2	RUD LOOP FEED OVERHEAD TRANSFORMER WITH CUTOUT	D	D
B-12-25	1 - 2	SINGLE-PHASE, TAKE-OFF STRUCTURE WITH EXISTING OVERHEAD TAP-OFF	D	F
B-12-36	1 - 2	RURAL 3 ϕ , SOLID BLADE DISCONNECT SINGLE-CIRCUIT REVERSE TAKE-OFF STRUCTURE WITH SPARE CONDUCTOR	0	0
B-12-37	1 - 2	RURAL 3 ϕ GOPT TAKE-OFF STRUCTURE WITH SPARE CONDUCTOR	0	0 / 0

SaskPower - DISTRIBUTION STANDARDS

APPROVAL	DESIGN CHK	DRN. ARU	INDEX	
L. MOEN	A. UHREN	CHKD.		
		2017-08-14		
DATE OF ISSUE: 2017/08/31		DRAWING NO: B-12-INDEX	SHEET 1 of 1	REV. K

RURAL UNDERGROUND DISTRIBUTION GENERAL DESIGN CRITERIA

1. NEW RURAL SERVICES

1.1. RADIAL FEED

THE MAJORITY OF NEW RURAL SERVICES WILL CONSIST OF A RADIAL UNDERGROUND TAP OFF AN EXISTING SINGLE-PHASE OR THREE-PHASE OVERHEAD LINE.

THE COMPONENTS REQUIRED FOR A RADIALLY FED NEW RURAL SERVICE ARE:

- TAKE-OFF STRUCTURE
- PRIMARY CABLE
- PADMOUNTED TRANSFORMER AND ASSOCIATED ACCESSORIES
- METERING PEDESTAL (FARMS ONLY)

THE STANDARD ENGINEERING PRACTICE IS TO INSTALL A MAXIMUM OF 3 RURAL CUSTOMERS ON A RADIAL. AFTER 3 CUSTOMERS, CONSIDERATION SHOULD BE GIVEN TO INSTALL A LOOP SYSTEM.

1.2. LOOP (ALTERNATE) FEED

NEW RURAL SERVICES WHICH OCCUR WITHIN THE BOUNDARIES OF AN EXISTING RUD PROJECT OR WHICH ARE IN CLOSE PROXIMITY TO AN EXISTING UNDERGROUND CABLE SHALL BE INSTALLED AS A LOOP (ALTERNATE) FEED SERVICE. BOTH THE INCOMING (LINE SIDE) AND OUTGOING (LOAD SIDE) CABLES SHALL BE SPLICED INTO THE EXISTING UNDERGROUND CABLE.

THE COMPONENTS REQUIRED FOR A LOOP (ALTERNATE) FEED NEW FARM SERVICES ARE:

- SPLICES AT TAKE-OFF LOCATION
- PRIMARY CABLE (TWO RUNS)
- PADMOUNTED TRANSFORMER AND ASSOCIATED ACCESSORIES
- METERING PEDESTAL (FARMS ONLY)

2. RURAL UNDERGROUND DISTRIBUTION (RUD) PROJECTS

ALL RUD PROJECTS WILL BE DESIGNED AS LOOP (ALTERNATE) FEED SYSTEMS. THEY WILL GENERALLY TAP OFF A THREE-PHASE OVERHEAD LINE AND WILL 'LOOP BACK' ONTO THE SAME THREE-PHASE OVERHEAD LINE.

EACH PROJECT WILL BE BASED ON THE FOLLOWING GENERAL GUIDELINES (FOR THE WHOLE LOOP):

- A MAXIMUM OF 40 CUSTOMERS
- A MAXIMUM TOTAL PEAK LOAD OF 400 KVA (27.8A @ 14.4KV)
- A MAXIMUM TOTAL CABLE LENGTH OF 40 MILES (64 KM) INCLUDING THE LENGTH OF ALL RADIAL TAPS WITHIN THE LOOP
- THE STANDARD ENGINEERING PRACTICE IS TO INSTALL A MAXIMUM OF 3 RURAL CUSTOMERS ON A RADIAL TAP WITHIN THE RUD LOOP. AFTER 3 CUSTOMERS, THE RADIAL TAP SHALL BE INTEGRATED INTO THE RUD LOOP.

THE COMPONENTS REQUIRED FOR A RURAL UNDERGROUND PROJECT ARE:

- TAKE-OFF STRUCTURES
- PRIMARY CABLE
- PADMOUNTED TRANSFORMERS AND ASSOCIATED ACCESSORIES
- SWITCHING CUBICLES (IF REQUIRED IN DESIGN)
- INDUCTIVE REACTORS
- METERING (EXISTING OR METERING PEDESTAL)

REFER TO THE RUD DESIGNERS HANDBOOK FOR FURTHER DESIGN DETAILS.

SaskPower - DISTRIBUTION STANDARDS				
APPROVAL L. MOEN	DESIGN CHK A. UHREN	DRN. ARU CHKD.	GENERAL INFORMATION	
		2017-01-12		
DATE OF ISSUE:	2017/05/03	DRAWING NO: B-12-00	SHEET 1 of 2	REV. A

3. DESIGN COMPONENTS

THE DESIGN COMPONENTS FOR THE RUD SYSTEM ARE AS FOLLOWS:

- O/H TO U/G TAKE-OFF STRUCTURES – SECTION B-12-XX
- UNDERGROUND PRIMARY CABLE – SECTION B-26-XX
- PADMOUNTED TRANSFORMERS – SECTION B-08-XX
- SWITCHING CUBICLES – SECTION B-26-XX
- INDUCTIVE REACTORS – SECTION B-26-XX
- METERING – SECTION B-24-XX

4. CABLE LOCATION

CABLE ROUTES SHALL BE SELECTED TO OPTIMIZE CABLE REQUIREMENTS AND TO REDUCE THE NUMBER OF CABLE CROSSINGS REQUIRED.

DEVIATIONS FROM THE GUIDELINES RECOMMENDED BELOW MAY BE CONSIDERED TO ACCOMMODATE PHYSICAL AND TOPOGRAPHICAL FEATURES IN THE AREA.

UNDERGROUND POWER CABLE SHALL GENERALLY BE LOCATED PARALLEL TO ROAD ALLOWANCE CENTER LINES, SECTION LINES, AND QUARTER MILE LINES (IE. ON THE SQUARE) WHEREVER POSSIBLE.

WHERE PARALLELING A ROAD ALLOWANCE AND WHEREVER PRACTICAL (IE. NO PHYSICAL OBSTRUCTIONS), MAINTAIN A MINIMUM DISTANCE FROM THE ROAD ALLOWANCE CENTER LINE OF 50m (164'). IF DEVIATIONS FROM THE 50m DISTANCE ARE REQUIRED, MAKE SUCH DEVIATION IN INCREMENTS OF 5m (16.4') TO ALLOW FOR GOOD AS-BUILT DRAWINGS AND FUTURE CABLE/FAULT LOCATING.

WHERE PARALLELING A BOUNDARY LINE OTHER THAN A ROAD ALLOWANCE (IE. SECTION LINES, QUARTER MILE LINES), MAINTAIN A MINIMUM DISTANCE FROM BOUNDARY LINE OF 5m (16.4').

IF DEVIATIONS FROM THE 5m DISTANCE ARE REQUIRED, MAKE SUCH DEVIATION IN 5m INCREMENTS.

5. DEPTH OF COVER

MINIMUM REQUIRED DEPTH OF COVER OVER THE CABLE SHALL BE ONE METRE.

SaskPower - DISTRIBUTION STANDARDS

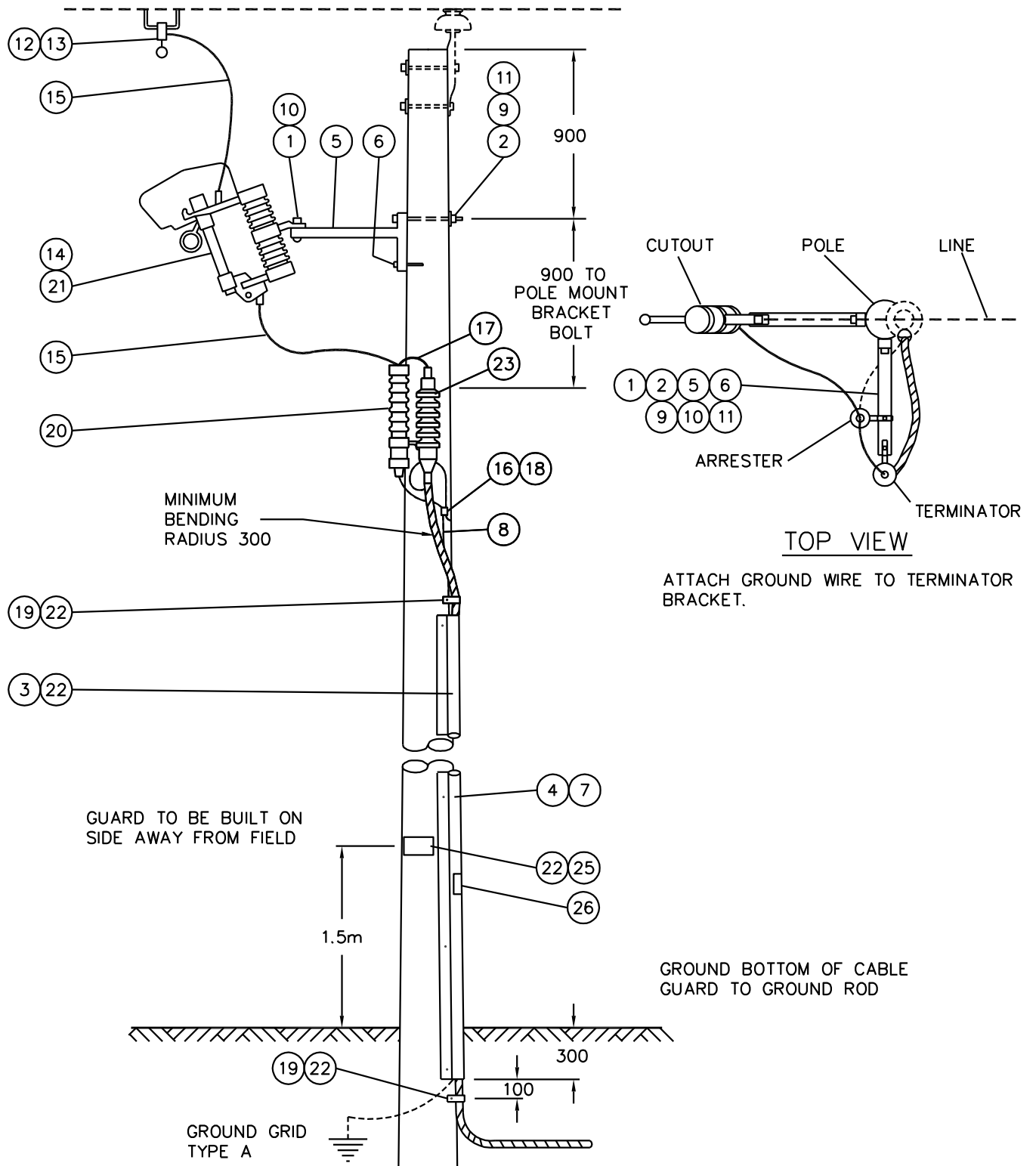
APPROVAL	DESIGN CHK	DRN. ARU	GENERAL INFORMATION
L. MOEN	A. UHREN	CHKD.	
		2017-01-12	
DATE OF ISSUE:	2017/05/03	DRAWING NO: B-12-00	SHEET 2 of 2 REV. A

BILL OF MATERIAL

ITEM NO.	CODE NO.	QUANTITY	DESCRIPTION
1	1 12 02	2	BOLT MACHINE - 1/2" x 2"
2	1 13 12	2	BOLT MACHINE - 5/8" X 12"
3	1 34 09	3	GUARD CABLE PLASTIC - 2 1/2" x 8'
4	1 34 11	1	GUARD CABLE STEEL - 2 1/2" x 8'
5	1 35 31	2	BRACKET – "T" FOR ARRESTORS & CUTOUTS
6	1 78 12	2	SCREW LAG - 1/2" x 4 1/2"
7	1 78 38	6	SCREW LAG - 3/8" x 4"
8	1 85 01	1/4 lb	STAPLE FENCE – 1 3/4"
9	1 93 27	2	WASHER – DOUBLE COIL – 5/8"
10	1 93 30	4	WASHER ROUND - 9/16"
11	1 93 42	2	WASHER SQUARE – 2 1/4" x 2 1/4" x 13/16" HOLE
12	2 02 70	1	CLAMP LIVELINE
13	2 02 82	1	CLAMP BAIL - #6 - 1/0 ASCR
14	2 12 62	1	CUTOUT LOADBREAK - 27 kV 100 AMP
15	2 83 02	3 m	WIRE CU - #2/7 STR
16	2 83 04	8 m	WIRE CU - #4/7 STR
17	5 09 27	1	CONNECTOR - COMPRESSION AL
18	5 12 06	1	CONNECTOR CU – 4C4
19	5 46 18	2	STRAP LEAD
20	6 02 21	1	ARRESTER SURGE - 21 kV SERIES GAPPED MOV
21	7 38 XX	1	FUSELINK - FITALL
22	7 69 64	0.26	SCREW WOOD - #14 x 2 1/2" (100/BOX)
23	8 35 36	1	TERMINATOR - #2 AL
24	71 35 00	1	KIT - CABLE PREPARATION
25	5 640 000	1	SIGN DANGER – “HIGH VOLTAGE”
26	5 646 582	1	DECAL – WATCH FOR WIRES

SaskPower - DISTRIBUTION STANDARDS

DRN.	DESIGN CHK.	APPROVAL	SINGLE-PHASE TAKE-OFF STRUCTURE
CHKD.			
DATE	DATE	DATE	
DATE OF ISSUE 2007/04/16		DRAWING NO: B-12-10	SHEET 1 OF 2 REV. F



NOTES:

- 1) STRUCTURE NOT TO BE PLACED ON POLE WITH TRANSFORMER.
- 2) TRENCH FOR CABLE TAKE-OFF TO BE IN LINE WITH OH CIRCUIT FOR AT LEAST FOUR (4) METERS TO HELP AVOID POLE LEAN DUE TO TRENCH BACKFILL.

SCALE: N.T.S. ALL DIMENSIONS ARE IN MILLIMETRES UNLESS OTHERWISE INDICATED

SaskPower - DISTRIBUTION ENGINEERING STANDARDS

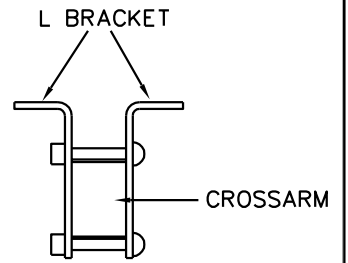
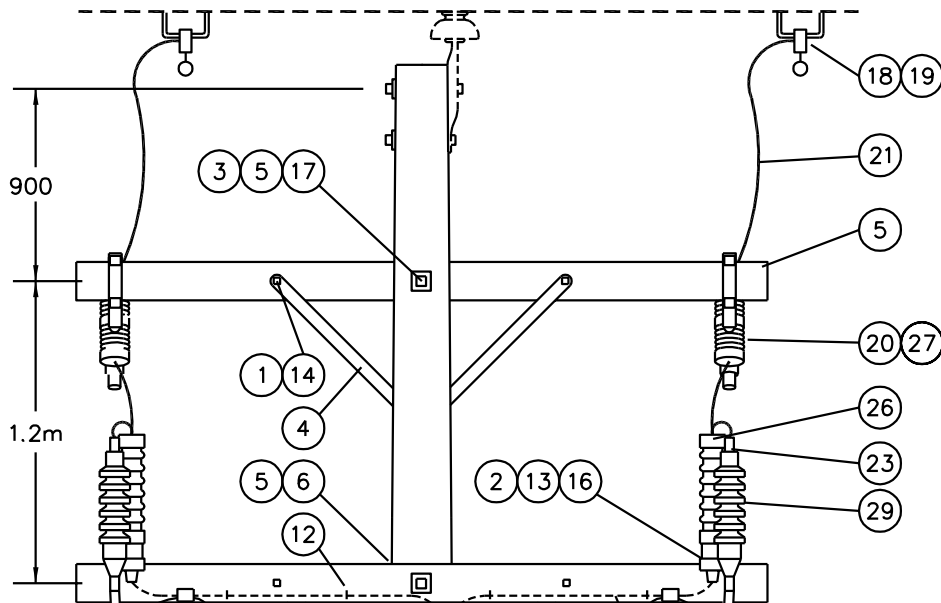
DRN. DK	DESIGN CHK.	APPROVAL	SINGLE-PHASE TAKE-OFF STRUCTURE	
CHKD.				
DATE	DATE	DATE		
DATE OF ISSUE: 2007/04/16		DRAWING NO. B-12-10	SHEET 2 of 2	REV. E

BILL OF MATERIAL

ITEM NO.	CODE NO.	QUANTITY	DESCRIPTION
1	1 08 38	4	BOLT CARRIAGE - 3/8" x 4 1/2"
2	1 12 02	4	BOLT MACHINE - 1/2" x 2"
3	1 13 18	2	BOLT MACHINE - 5/8" x 18"
4	1 19 32	4	BRACE CROSSARM - 32"
5	1 29 10	2	CROSSARM - 4" x 5" x 10'
6	1 32 86	2	GAIN POLE - WOOD
7	1 34 09	3	GUARD CABLE PLASTIC - 2 1/2" x 8'
8	1 34 11	1	GUARD CABLE STEEL - 2 1/2" x 8'
9	1 35 32	4	BRACKET - CROSSARM
10	1 78 12	2	SCREW LAG - 1/2" x 4 1/2"
11	1 78 38	6	SCREW LAG - 3/8" x 4"
12	1 85 01	1/4 lb	STAPLE FENCE - 1 3/4"
13	1 93 22	4	WASHER - LOCK - 1/2"
14	1 93 25	4	WASHER - LOCK - 3/8" DOUBLE COIL SPRING
15	1 93 27	2	WASHER - LOCK - 5/8" DOUBLE COIL SPRING
16	1 93 30	4	WASHER - ROUND - 9/16"
17	1 93 42	4	WASHER - SQUARE - 2 1/4" x 2 1/4" x 13/16" HOLE
18	2 02 82	2	CLAMP BAIL - #6 - 1/0 ACSR
19	2 02 70	2	CLAMP LIVELINE
20	2 12 62	2	CUT OUT LOADBREAK - 27 kV 100 A
21	2 83 02	6 m	WIRE CU - #2/7 STR
22	2 83 04	9 m	WIRE CU - #4/7 STR
23	5 09 27	2	CONNECTOR AL - CRIMPIT 508
24	5 12 06	3	CONNECTOR CU - 4C4
25	5 46 18	2	STRAP LEAD
26	6 02 21	2	ARRESTER SURGE - 21 kV SERIES GAPPED MOV
27	7 38 XX	2	FUSELINK - FITALL
28	7 69 64	0.30	SCREW WOOD - #14 x 2 1/2" (100/BOX)
29	8 35 36	2	TERMINATOR - #2 AL
30	71 35 00	2	KIT - CABLE PREPARATION
31	05 640 000	1	SIGN DANGER
32	05 646 582	1	DECAL - WATCH FOR WIRES

SaskPower - DISTRIBUTION STANDARDS

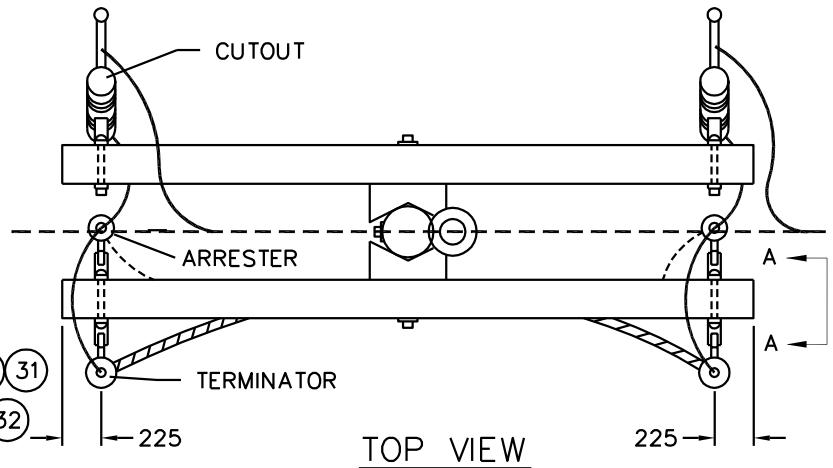
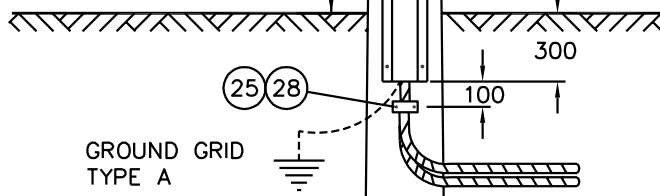
DRN.	DESIGN CHK.	APPROVAL	SINGLE-PHASE DOUBLE TAKE-OFF STRUCTURE
CHKD.		DATE	
DATE	DATE	DATE	
DATE OF ISSUE 2007/04/16		DRAWING NO: B-12-11	SHEET 1 OF 2 REV. F



SECTION A-A
N.T.S

TRENCH FOR CABLE TAKE-OFFS TO BE IN LINE WITH OH CIRCUIT FOR AT LEAST FOUR (4) METERS TO HELP AVOID POLE LEAN DUE TO TRENCH BACKFILL

GUARD TO BE BUILT ON SIDE AWAY FROM FIELD.
GROUND BOTTOM OF CABLE 1.5m GUARD TO GROUND ROD.



TOP VIEW

INSURE SUFFICIENT CABLE SLACK AT BASE OF POLE IN CASE OF TERMINATOR FAILURE.

NOTE:

1. FOR DEADEND STRUCTURE, TURN CUTOUT AND TERMINATOR ARMS 90°, SO THAT THE TERMINATOR CROSSARM IS UNDER THE GUY WIRE.
2. ARRESTERS ARE SHOWN OFFSET FOR CLARITY, REFER TO TOP VIEW FOR CORRECT ARRESTER LOCATION.

SCALE: N.T.S. ALL DIMENSIONS ARE IN MILLIMETRES UNLESS OTHERWISE INDICATED

SaskPower - DISTRIBUTION ENGINEERING STANDARDS

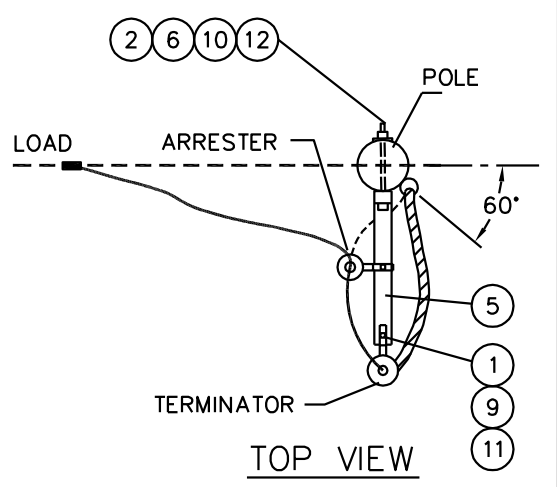
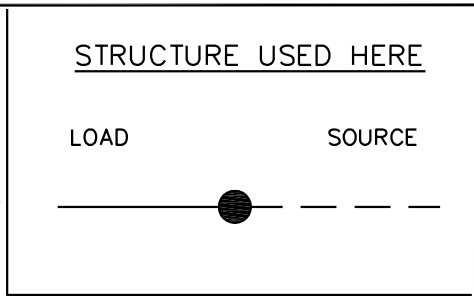
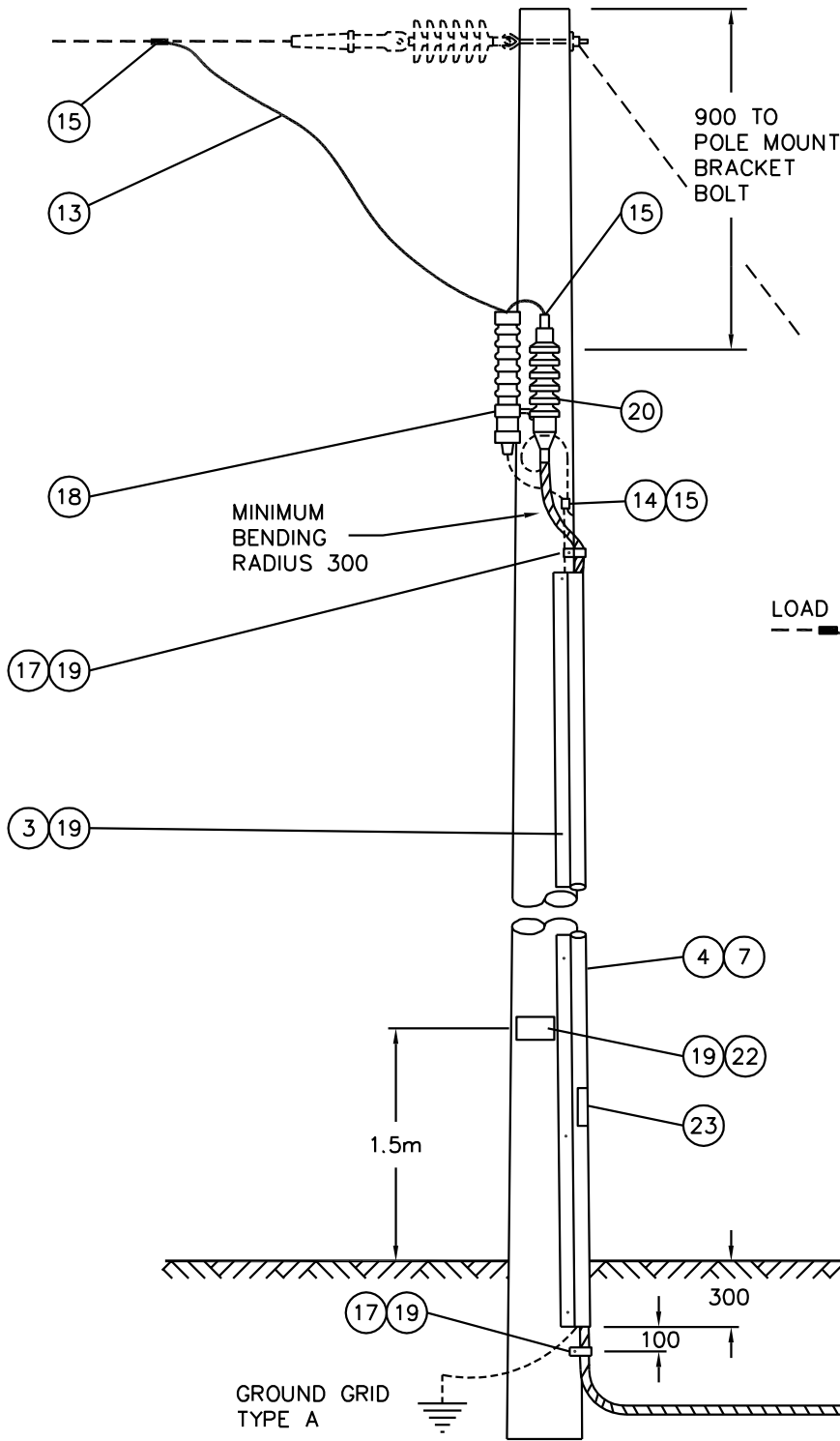
DRN. DK	DESIGN CHK.	SAFETY APP.	APPROVAL	SINGLE-PHASE DOUBLE TAKE-OFF STRUCTURE	
CHKD.					
DATE	DATE	DATE	DATE		
DATE OF ISSUE: 2007/04/16			DRAWING NO. B-12-11	SHEET 2 of 2	REV. E

BILL OF MATERIAL

ITEM NO.	CODE NO.	QUANTITY	DESCRIPTION
1	1 12 02	2	BOLT MACHINE - 1/2" x 2"
2	1 13 12	1	BOLT MACHINE - 5/8" x 12"
3	1 34 09	3	GUARD CABLE PLASTIC - 2 1/2" x 8'
4	1 34 11	1	GUARD CABLE STEEL - 2 1/2" x 8'
5	1 35 31	1	BRACKET – "T" FOR ARRESTORS & CUTOUTS
6	1 78 12	1	SCREW LAG - 1/2" x 4 1/2"
7	1 78 38	6	SCREW LAG - 3/8" x 4"
8	1 85 01	1/4 lb	STAPLE FENCE - 1 3/4"
9	1 93 22	2	WASHER LOCK - 1/2"
10	1 93 27	1	WASHER LOCK – 5/8"
11	1 93 30	2	WASHER ROUND - 9/16"
12	1 93 42	1	WASHER SQUARE – 2 1/4" x 2 1/4" x 13/16" HOLE
13	2 83 02	3 m	WIRE CU - #2/7 STR
14	2 83 04	8 m	WIRE CU - #4/7 STR
15	5 09 27	2	CONNECTOR AL – CRIMPIT 508
16	5 12 06	1	CONNECTOR CU – 4C4
17	5 46 18	2	STRAP LEAD
18	6 02 21	1	ARRESTER SURGE - 21 kV SERIES GAPPED MOV
19	7 69 64	0.26	SCREW WOOD - #14 x 2 1/2" (100/BOX)
20	8 35 36	1	TERMINATOR - #2 AL
21	71 35 00	1	KIT - CABLE PREPARATION
22	05 640 000	1	SIGN – DANGER “HIGH VOLTAGE”
23	05 646 582	1	DECAL – WATCH FOR WIRES

SaskPower - DISTRIBUTION STANDARDS

DRN.	DESIGN CHK.	APPROVAL	REVERSE FROM U/G TO O/H TAKE-OFF ON RADIAL
CHKD.			
DATE	DATE	DATE	
DATE OF ISSUE 2007/04/16		DRAWING NO: B-12-12	SHEET 1 OF 2 REV. E



- NOTE:
1. REFER TO A-12-05 FOR DEAD END.
 2. BRACKET AND CABLE GUARD ARE GROUNDED.
 3. STRUCTURE NOT TO BE PLACED ON POLE WITH TRANSFORMER.

SaskPower - DISTRIBUTION STANDARDS

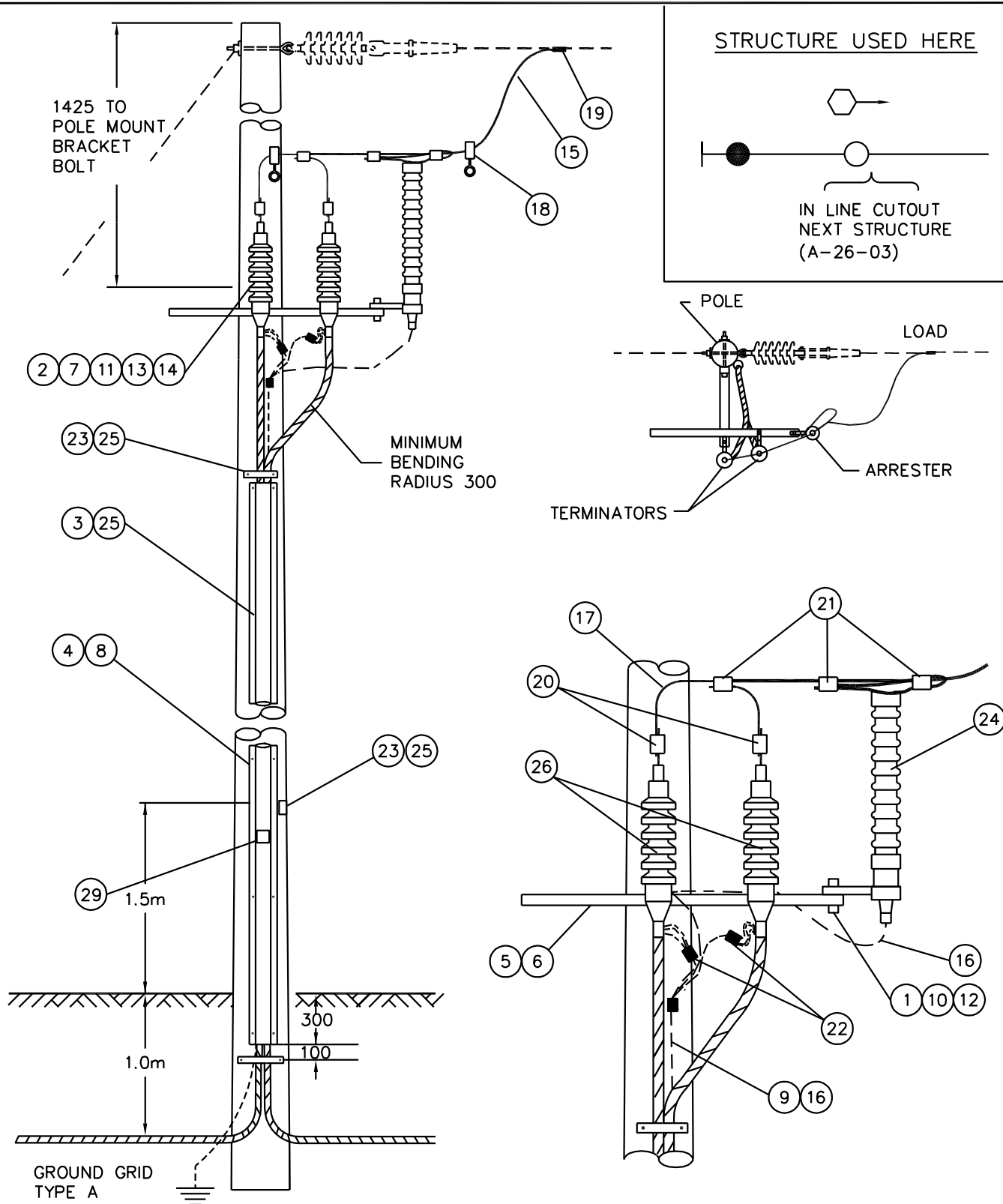
DRN. DK	DESIGN CHK.	SAFETY APP.	APPROVAL	REVERSE FROM U/G TO O/H TAKE-OFF ON RADIAL
CHKD.				
DATE 93-05-17	DATE	DATE	DATE	
DATE OF ISSUE: 2007/04/16			DRAWING NO. B-12-12	SHEET 2 of 2
				REV. D

BILL OF MATERIAL

ITEM NO.	CODE NO.	QUANTITY	DESCRIPTION
1	1 12 02	3	BOLT MACHINE - 1/2" x 2"
2	1 13 12	1	BOLT MACHINE - 5/8" x 12"
3	1 34 09	3	GUARD CABLE PLASTIC - 2 1/2" x 8'
4	1 34 11	1	CABLE GUARD STEEL - 2 1/2" x 8'
5	1 35 33	1	BRACKET – RUD FOR ARRESTOR, CUTOUT & TERMINATOR
6	1 35 35	1	BRACKET - INSULATING GUARD
7	1 78 12	1	SCREW LAG - 1/2" x 4 1/2"
8	1 78 38	6	SCREW LAG - 3/8" x 4"
9	1 85 01	1/4 lb	STAPLE FENCE - 1 3/4"
10	1 93 22	3	WASHER – LOCK – 1/2"
11	1 93 27	1	WASHER – LOCK – 5/8" DOUBLE COIL
12	1 93 30	2	WASHER – ROUND – 1 3/8" O.D. 9/16" HOLE
13	1 93 33	2	WASHER – ROUND – 1 3/4" O.D. 11/16" HOLE
14	1 93 42	1	WASHER SQUARE – 2 1/4" x 2 1/4" x 13/16" HOLE
15	2 83 02	2 m	WIRE CU - #2/7 STR
16	2 83 04	4 m	WIRE CU - #4/7 STR
17	2 84 02	1 m	WIRE CU - #2 SOLID
18	5 06 97	2	FAULT INDICATOR – LOGIC CONTROLLED 4 STEP
19	5 09 27	1	CONNECTOR AL - CRIMPIT 508
20	5 11 15	2	INSULINK - ORANGE/ORANGE
21	5 12 01	3	CONNECTOR CU – 2C2
22	5 12 08	2	CONNECTOR CU – 2C4
23	5 46 18	2	STRAP LEAD
24	6 02 21	1	ARRESTER SURGE - 21 kV SERIES GAPPED MOV
25	7 69 64	0.26	SCREW WOOD - #14" x 2 1/2" (100/BOX)
26	8 35 36	2	TERMINATOR - #2 AL
27	71 35 00	2	KIT - CABLE PREPARATION
28	05 640 000	1	SIGN - DANGER HIGH VOLTAGE
29	05 641 535	1	SIGN SELF-ADHESIVE - DANGER UNDERGROUND CABLE

SaskPower - DISTRIBUTION STANDARDS

DRN.	DESIGN CHK.	APPROVAL	SINGLE-PHASE, OVERHEAD STRUCTURE TO FEED COMMUNITIES FROM A RUD LOOP
CHKD.			
DATE	DATE	DATE	
DATE OF ISSUE 2007/04/16		DRAWING NO: B-12-13	SHEET 1 OF 2 REV. C



- NOTE:
1. STRUCTURE TO BE USED TO FEED COMMUNITIES FROM A RUD LOOP.
 2. REFER TO A-12-05 FOR DEADEND.
 3. BRACKET AND CABLE GUARD ARE GROUNDED.

SaskPower - DISTRIBUTION STANDARDS

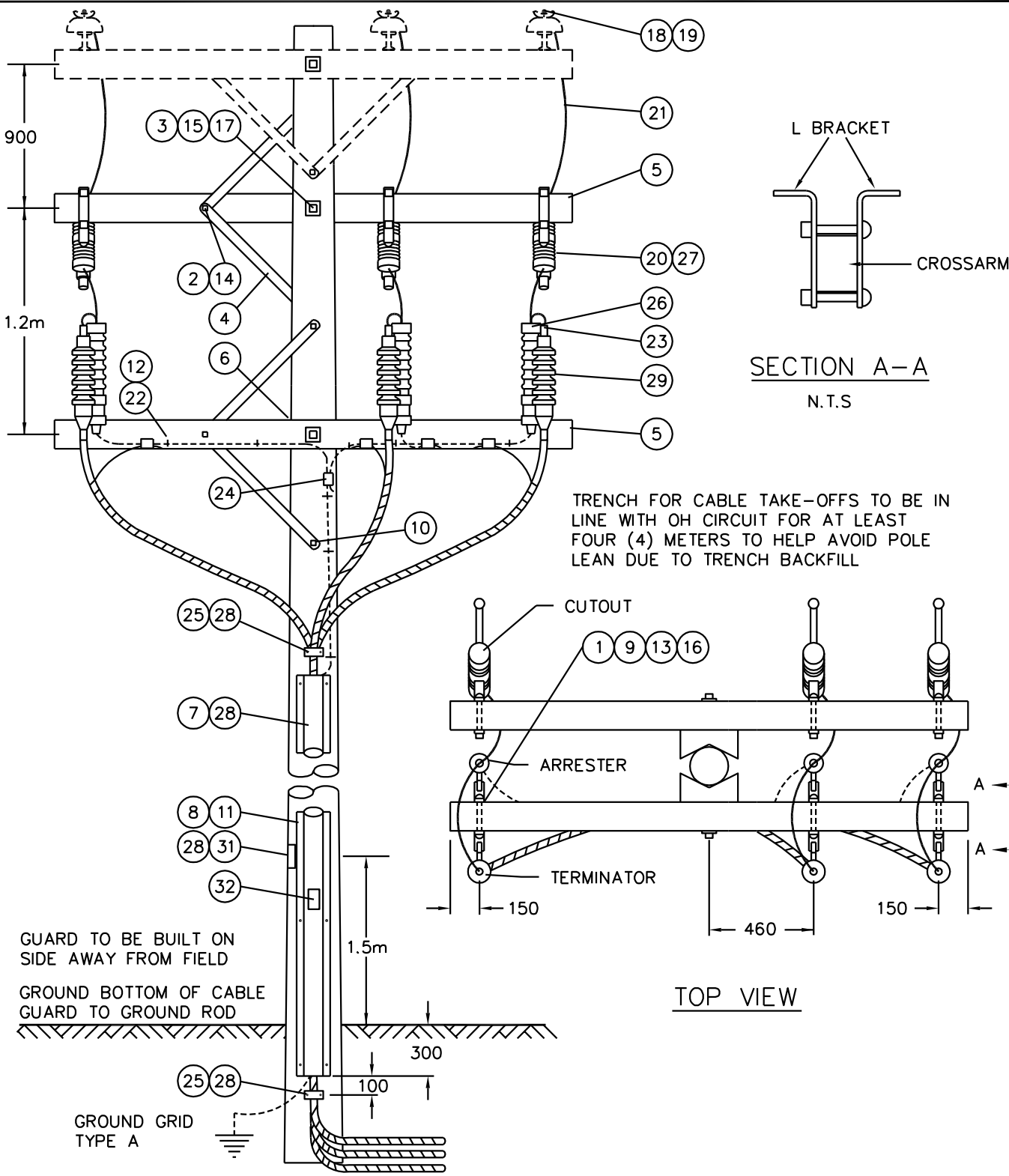
DRN. M.T.S.	DESIGN CHK.	SAFETY APP.	APPROVAL	SINGLE PHASE, OVERHEAD STRUCTURE TO FEED COMMUNITIES FROM A RUD LOOP	
CHKD.					
DATE 93-11-24	DATE	DATE	DATE		
DATE OF ISSUE: 2007/04/16			DRAWING NO. B-12-13	SHEET 2 of 2	REV. A

BILL OF MATERIAL

ITEM NO.	CODE NO.	QUANTITY	DESCRIPTION
1	1 12 02	6	BOLT MACHINE – ½" x 2"
2	1 08 38	2	BOLT CARRIAGE - 3/8" x 4 1/2"
3	1 13 18	2	BOLT MACHINE - 5/8" x 18"
4	1 19 32	4	BRACE CROSSARM - 32"
5	1 29 10	2	CROSSARM - 4" x 5" x 10'
6	1 32 86	2	GAIN POLE - WOOD
7	1 34 08	3	GUARD CABLE PLASTIC - 4" x 8'
8	1 34 10	1	GUARD CABLE STEEL - 4" x 8'
9	1 35 32	6	BRACKET - CROSSARM
10	1 78 12	4	SCREW LAG – 1/2" x 4 1/2"
11	1 78 38	6	SCREW LAG – 3/8" x 4"
12	1 85 01	1/4 lb	STAPLE FENCE - 1 3/4"
13	1 93 22	6	WASHER LOCK – ½"
14	1 93 25	2	WASHER LOCK – 3/8" DOUBLE COIL
15	1 93 27	2	WASHER LOCK – 5/8" DOUBLE COIL
16	1 93 30	6	WASHER ROUND – 9/16" HOLE
17	1 93 42	2	WASHER SQUARE – 2 ¼" x 2 ¼" x 13/16" HOLE
18	2 02 82	3	CLAMP BAIL - #6 - 1/0 ACSR
19	2 02 70	3	CLAMP LIVELINE
20	2 12 62	3	CUTOUT LOADBREAK - 27 kV 100 A
21	2 83 02	9 m	WIRE CU - #2/7 STR
22	2 83 04	11 m	WIRE CU - #4/7 STR
23	5 09 27	3	CONNECTOR AL – CRIMPIT 508
24	5 12 06	6	CONNECTOR CU – 4C4
25	5 46 18	2	STRAP LEAD
26	6 02 21	3	ARRESTER SURGE - 21 kV SERIES GAPPED MOV
27	7 38 XX	3	FUSELINK - FITALL
28	7 69 64	0.28	SCREW WOOD - #14 x 2 1/2" (100/BOX)
29	8 35 XX	3	TERMINATOR - CABLE
30	71 35 00	2	KIT - CABLE PREPARATION
31	05 640 000	1	SIGN DANGER
32	05 646 582	1	DECAL – WATCH FOR WIRES

SaskPower - DISTRIBUTION STANDARDS

DRN.	DESIGN CHK.	APPROVAL	THREE-PHASE TAKE-OFF STRUCTURE
CHKD.			
DATE	DATE	DATE	
DATE OF ISSUE 2007/04/16		DRAWING NO: B-12-15	SHEET 1 OF 2 REV. F



NOTE: 1. FOR FEEDER DIPS USE DRAWING B-14-16.
 2. FOR DEADEND STRUCTURE, THE TERMINATOR CROSSARM IS UNDER THE GUY WIRE.
 3. ARRESTERS ARE SHOWN OFFSET FOR CLARITY, REFER TO TOP VIEW FOR CORRECT ARRESTER LOCATION.
 4. FRAMING ON A NEW STRUCTURE, THE PREFERRED LOCATION FOR THE ARRESTER ARM IS UNDER THE CONDUCTOR ARM. THE ARRESTER ARM AND TERMINATOR ARM MAY BE TURNED 90° FOR CORRECT PHASING.

SCALE: N.T.S. ALL DIMENSIONS ARE IN MILLIMETRES UNLESS OTHERWISE INDICATED

SaskPower - DISTRIBUTION STANDARDS

DRN. DK	DESIGN CHK.	SAFETY APP.	APPROVAL	THREE-PHASE TAKE-OFF STRUCTURE
CHKD.				
DATE	DATE	DATE	DATE	
DATE OF ISSUE: 2007/04/16			DRAWING NO. B-12-15	SHEET 2 of 2
REV. E				

BILL OF MATERIAL

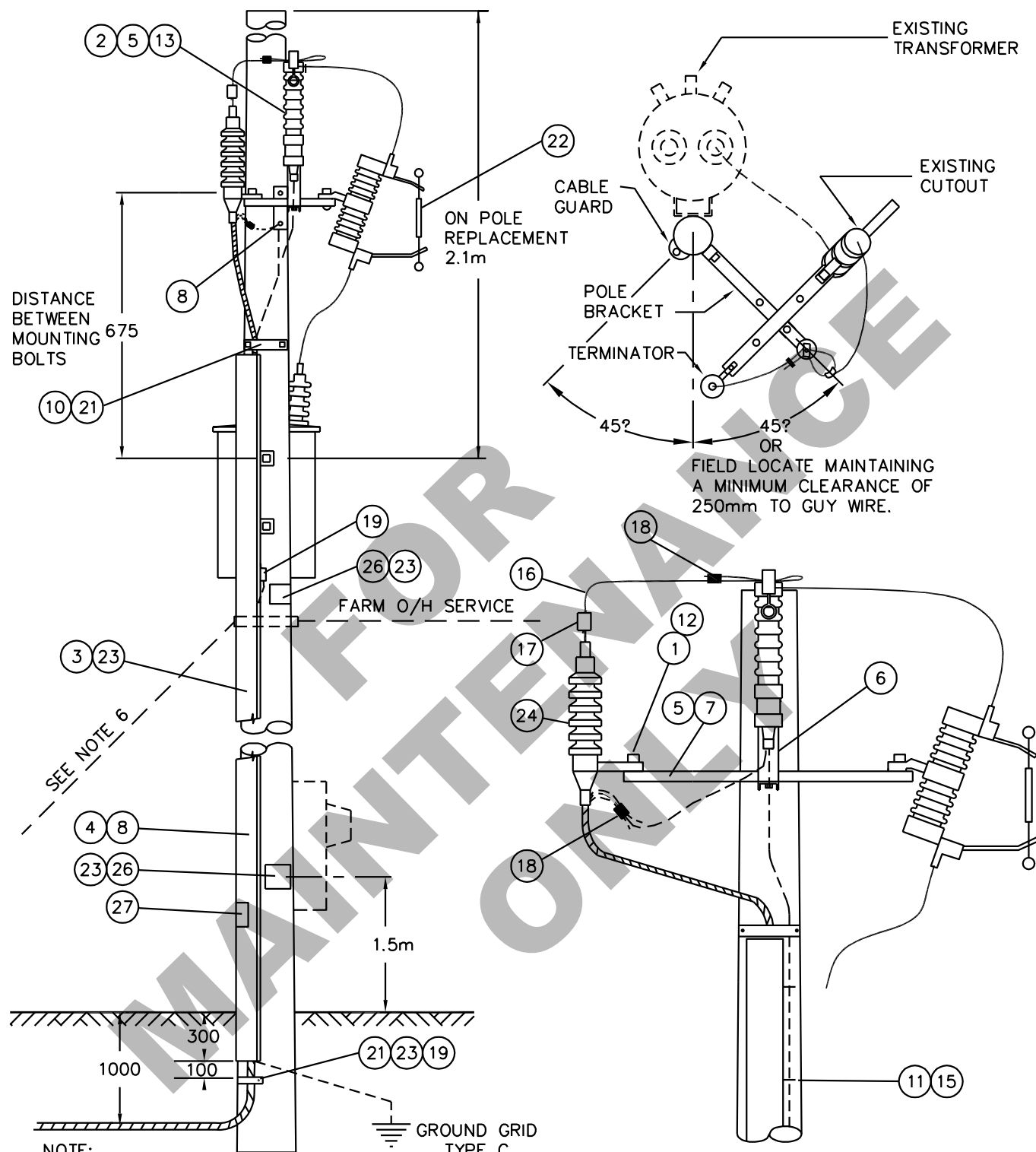
ITEM NO.	CODE NO.	QUANTITY	DESCRIPTION
1	1 12 02	1	BOLT MACHINE - 1/2" x 2"
2	1 13 12	1	BOLT MACHINE - 5/8" x 12"
3	1 34 09	3	GUARD CABLE PLASTIC - 2 1/2" x 8'
4	1 34 11	1	GUARD CABLE STEEL - 2 1/2" x 8'
5	1 35 33	1	BRACKET – RUD FOR ARRESTOR, CUTOUT & TERMINATOR
6	1 35 34	0	BRACKET - CLEARANCE
7	1 35 35	1	BRACKET - INSULATING GUARD
8	1 78 12	1	SCREW LAG - 1/2" x 4 1/2"
10	1 78 38	10	SCREW LAG - 3/8" x 4"
11	1 85 01	1/4 lb	STAPLE FENCE - 1 3/4"
12	1 93 30	1	WASHER ROUND - 9/16"
13	1 93 33	2	WASHER ROUND - 11/16"
14	1 93 42	1	WASHER SQUARE – 2 1/4" x 2 1/4" x 13/16" HOLE
15	2 83 04	3 m	WIRE CU - #4/7 STR
16	2 84 02	1 m	WIRE CU - #2 SOLID
17	5 11 15	1	INSULINK - ORANGE/ORANGE
18	5 12 01	1	CONNECTOR CU - 2C2
19	5 12 06	2	CONNECTOR CU - 4C4
20	5 12 08	1	CONNECTOR CU - 2C4
21	5 46 18	1	STRAP LEAD
22	7 37 06	X	FUSE - TRIPOLINK 6T
22	7 38 06	X	FUSE - FITALL 6T
23	7 69 64	0.30	SCREW WOOD - #14 x 2 1/2" (100/BOX)
24	8 35 36	1	TERMINATOR - #2 AL
25	71 35 00	1	KIT - CABLE PREPARATION
26	05 640 000	2	SIGN - DANGER HIGH VOLTAGE
27	05 641 535	1	SIGN SELF-ADHESIVE - DANGER UNDERGROUND CABLE

NOTE:

1. REUSE THE FOLLOWING: 2-12-XX CUTOUT, 6-02-XX ARRESTER,
2-83-02 #2 CU RISER, 2-02-71 LIVELINE CLAMP.
2. IF REQUIRED, USE THE FOLLOWING:
2-12-20 OR 2-12-67 CUTOUT AS REQ'D, 6-02-21 ARRESTER

SaskPower - DISTRIBUTION STANDARDS

DRN.	DESIGN CHK.	APPROVAL	SINGLE-PHASE, RADIAL FEED CABLE STRUCTURE WITH EXISTING POLE-MOUNTED TRANSFORMER
CHKD.			
DATE	DATE	DATE	
DATE OF ISSUE 2007/04/16		DRAWING NO: B-12-20	SHEET 1 OF 2 REV. H



NOTE:

1. REFER TO A-33 FOR GROUND GRID TYPE.
 2. REFER TO A-24 FOR FARM METERING.
 3. CABLE GUARD AND BRACKETS TO BE GROUNDED.
 4. EXISTING ARRESTER TO BE MOVED FROM TRANSFORMER TO BRACKET.
 5. INSTALL DANGER SIGNS IF MISSING
 6. FOR POLE LEAN USE A-32-06 DOWN GUY AND A-32-12 ANCHOR AT THE SHORT GUY DISTANCE.
- SCALE: N.T.S. ALL DIMENSIONS ARE IN MILLIMETRES UNLESS OTHERWISE INDICATED
- INSURE SUFFICIENT CABLE SLACK AT BASE OF POLE IN CASE OF TERMINATOR FAILURE

SaskPower - DISTRIBUTION STANDARDS

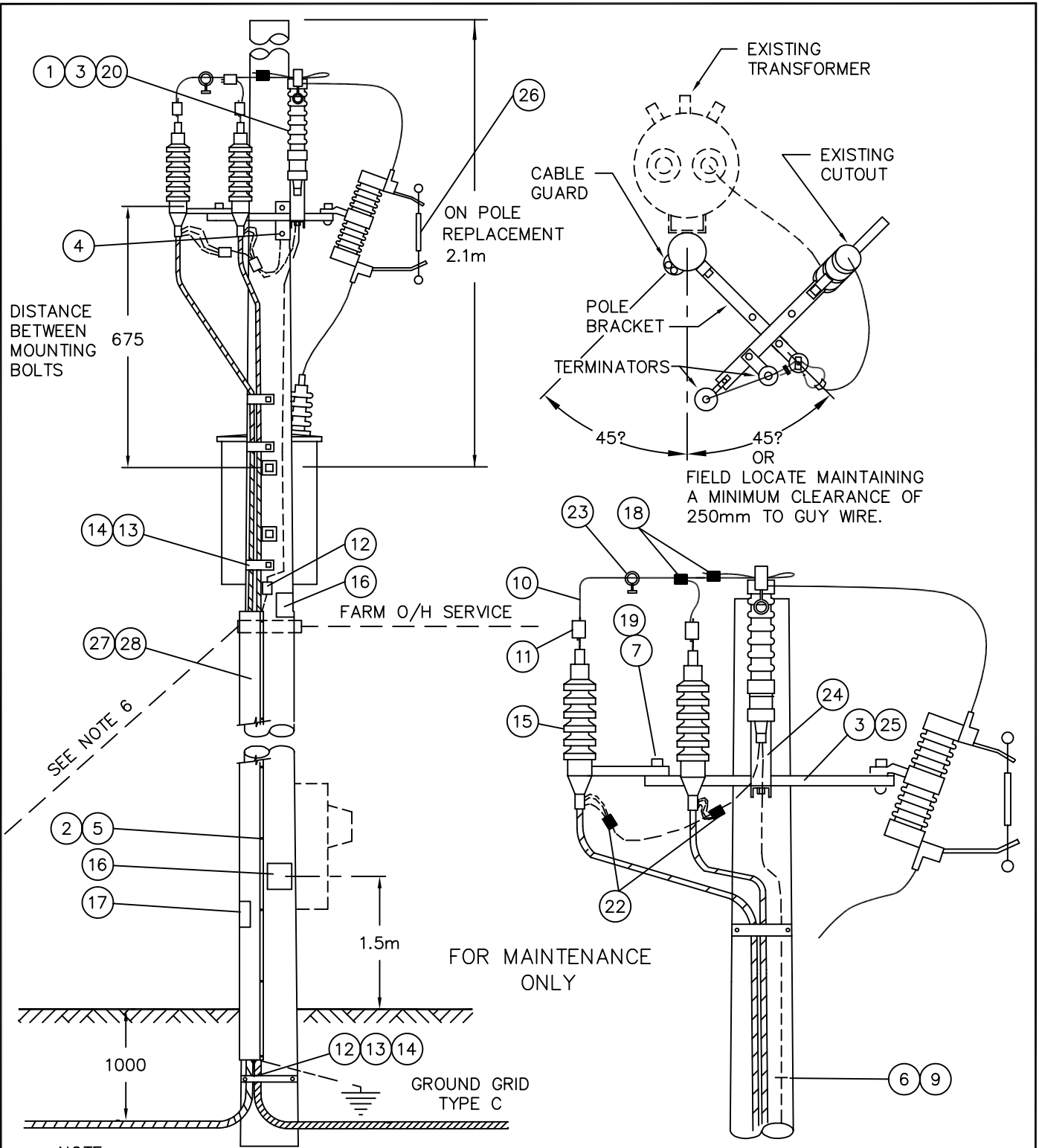
DRN.	DESIGN CHK.	APPROVAL	SINGLE PHASE, RADIAL FEED CABLE STRUCTURE WITH EXISTING POLE-MOUNTED TRANSFORMER
CHKD.			
DATE	DATE	DATE	
DATE OF ISSUE 2007/04/16		DRAWING NO. B-12-20	SHEET 2 of 2
			REV. G

BILL OF MATERIAL

ITEM NO.	CODE NO.	QUANTITY	DESCRIPTION
1	1-13-12	1	BOLT MACHINE - 5/8" x 12"
2	1-34-11	1	CABLE GUARD STEEL - 2 1/2" x 8'
3	1-35-33	1	BRACKET POLE - MOUNT
4	1-78-12	1	SCREW LAG - 1/2" x 4 1/2"
5	1-78-38	8	SCREW LAG - 3/8" x 4"
6	1-85-01	1/4 lb	STAPLE FENCE - 1 3/4"
7	1-93-30	2	WASHER ROUND - 9/16"
8	1-93-42	1	WASHER SQUARE - 2 1/4" x 2 1/4" x 13/16" HOLE
9	2-83-04	4 m	WIRE CU - #4/7 STR
10	2-84-02	1 m	WIRE CU - #2 SOLID
11	5-11-15	2	INSULINK - ORANGE/ORANGE
12	5-12-06	2	CONNECTOR CU-YC4C4
13	5-46-18	2	STRAP LEAD
14	7-69-64	0.10	SCREW WOOD - #14 x 2 1/2" (100/BOX)
15	8-35-36	2	TERMINATOR - #2 AL
16	05-640-000	2	SIGN - DANGER HIGH VOLTAGE
17	05-641-535	1	SIGN SELF-ADHESIVE - DANGER UNDERGROUND CABLE
18	5-12-01	2	CONNECTOR CU-YC2C2
19	1-12-02	3	BOLT MACHINE - 1/2" x 2"
20	1-93-33	2	WASHER ROUND - 11/16"
21	71-35-00	2	KIT - CABLE PREPARATION
22	5-12-08	2	CONNECTOR CU-YC2C4
23	5-06-97	1	FAULT INDICATOR - OVERHEAD 60 AMP TRIP
24	1-35-34	0	BRACKET - CLEARANCE
25	1-35-35	1	BRACKET - INSULATING GUARD
26	7-37-06	1	FUSE LINK - 6T
27	1-34-09	2	GUARD CABLE PLASTIC - 2 1/2" x 8' (SEE NOTE 3)
27	1-34-11	2	GUARD CABLE STEEL - 2 1/2" x 8' (SEE NOTE 3)
28	1-78-38	10	SCREW LAG - 3/8" X 4" (SEE NOTE 3)
28	7-69-64	0.12	SCREW WOOD - #14 x 2 1/2" (100/BOX)
			<p>NOTE:</p> <p>1. RE-USE THE FOLLOWING: 2-12-XX CUTOUT, 6-02-XX ARRESTER, 2-83-02 #2 CU RISER, 2-02-71 LIVELINE CLAMP.</p> <p>2. IF REQUIRED, USE THE FOLLOWING: 2-12-20 OR 2-12-67 CUTOUT AS REQ'D, 6-02-21 ARRESTER.</p> <p>3. WHEN PLASTIC GUARDS NOT AVAILABLE USE STEEL GUARDS WITH LAG SCREWS.</p>

SaskPower - DISTRIBUTION STANDARDS

DRN.	DESIGN CHK.	APPROVAL	SINGLE-PHASE, LOOP FEED CABLE STRUCTURE WITH EXISTING POLE-MOUNTED TRANSFORMER
CHKD.			
DATE	DATE	DATE	
DATE OF ISSUE 96-07-26		DRAWING NO: B-12-21	SHEET 1 OF 2 REV. F



NOTE:

1. REFER TO A-33 FOR GROUND GRID TYPE.
2. REFER TO A-24 FOR FARM METERING.
3. CABLE GUARD AND BRACKETS TO BE GROUNDED.
4. EXISTING ARRESTER TO BE MOVED FROM TRANSFORMER TO BRACKET.
5. INSTALL DANGER SIGNS IF MISSING
6. FOR POLE LEAN USE A-32-06 DOWN GUY AND A-32-12 ANCHOR AT THE SHORT GUY DISTANCE.

SCALE: N.T.S. ALL DIMENSIONS ARE IN MILLIMETRES UNLESS OTHERWISE INDICATED

INSURE SUFFICIENT CABLE SLACK AT BASE OF POLE IN CASE OF TERMINATOR FAILURE

SaskPower - DISTRIBUTION STANDARDS

DRN.	DESIGN CHK.	APPROVAL	SINGLE PHASE, LOOP FEED CABLE STRUCTURE WITH EXISTING POLE-MOUNTED TRANSFORMER
CHKD.			
DATE	DATE	DATE	
DATE OF ISSUE	DRAWING NO. B-12-21		SHEET 2 of 2
			REV. E

BILL OF MATERIAL

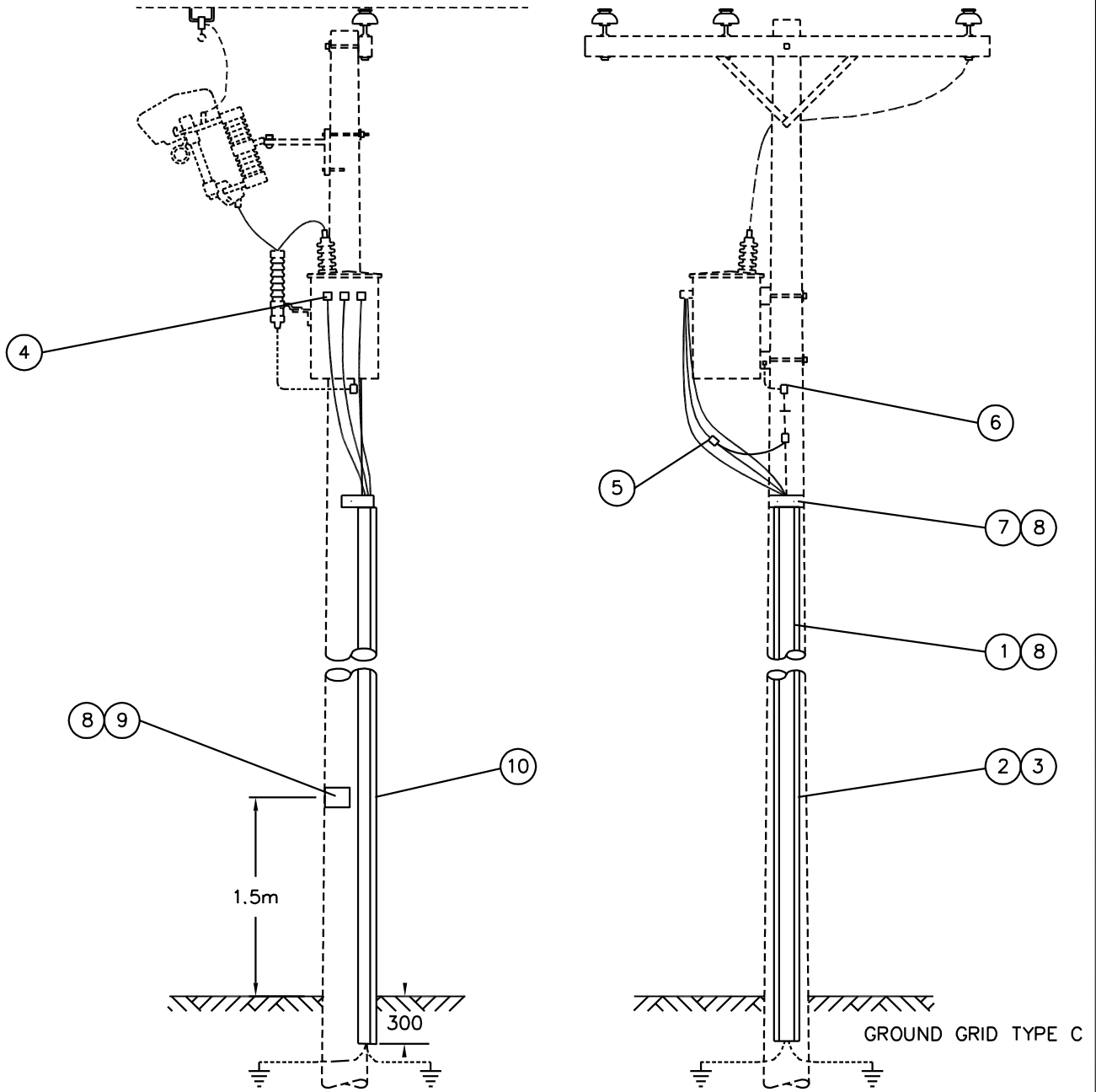
ITEM NO.	CODE NO.	QUANTITY	DESCRIPTION
1	1 34 09	3	GUARD CABLE PLASTIC - 2 1/2" x 8'
2	1 34 11	1	GUARD CABLE STEEL - 2 1/2" x 8'
3	1 78 38	6	SCREW LAG - 3/8" x 4"
4	2 65 84	3	HYLUG 1/0 (SEE NOTE 1)
5	5 09 XX	1	CONNECTOR AL – CRIMPIT (SEE NOTE 1)
6	5 12 06	3	CONNECTOR CU – 4C4
7	5 46 18	1	STRAP LEAD
8	7 69 64	0.28	SCREW WOOD - #14 x 2 1/2" (100/BOX)
9	05 640 000	1	SIGN - "DANGER H.V."
10	05 646 582	1	DECAL – WATCH FOR WIRES

NOTE:

1. REFER TO SECTION A-36 FOR SPECIFIC MATERIAL REQUIREMENTS.

SaskPower - DISTRIBUTION STANDARDS

DRN.	DESIGN CHK.	APPROVAL	RUD SECONDARY TAKE-OFF STRUCTURE
CHKD.			
DATE	DATE	DATE	
DATE OF ISSUE 2007/04/16		DRAWING NO: B-12-22	SHEET 1 OF 2 REV. E



1. REFER TO A-08-08, A-12-51 AND A-33-01C FOR OTHER CONSTRUCTION.
2. REFER TO B-22-10 FOR MAXIMUM SECONDARY CABLE LENGTHS.
3. GROUND BOTTOM OF CABLE GUARD TO GROUND ROD.

SCALE: N.T.S. ALL DIMENSIONS ARE IN MILLIMETRES UNLESS OTHERWISE INDICATED

SaskPower - DISTRIBUTION STANDARDS

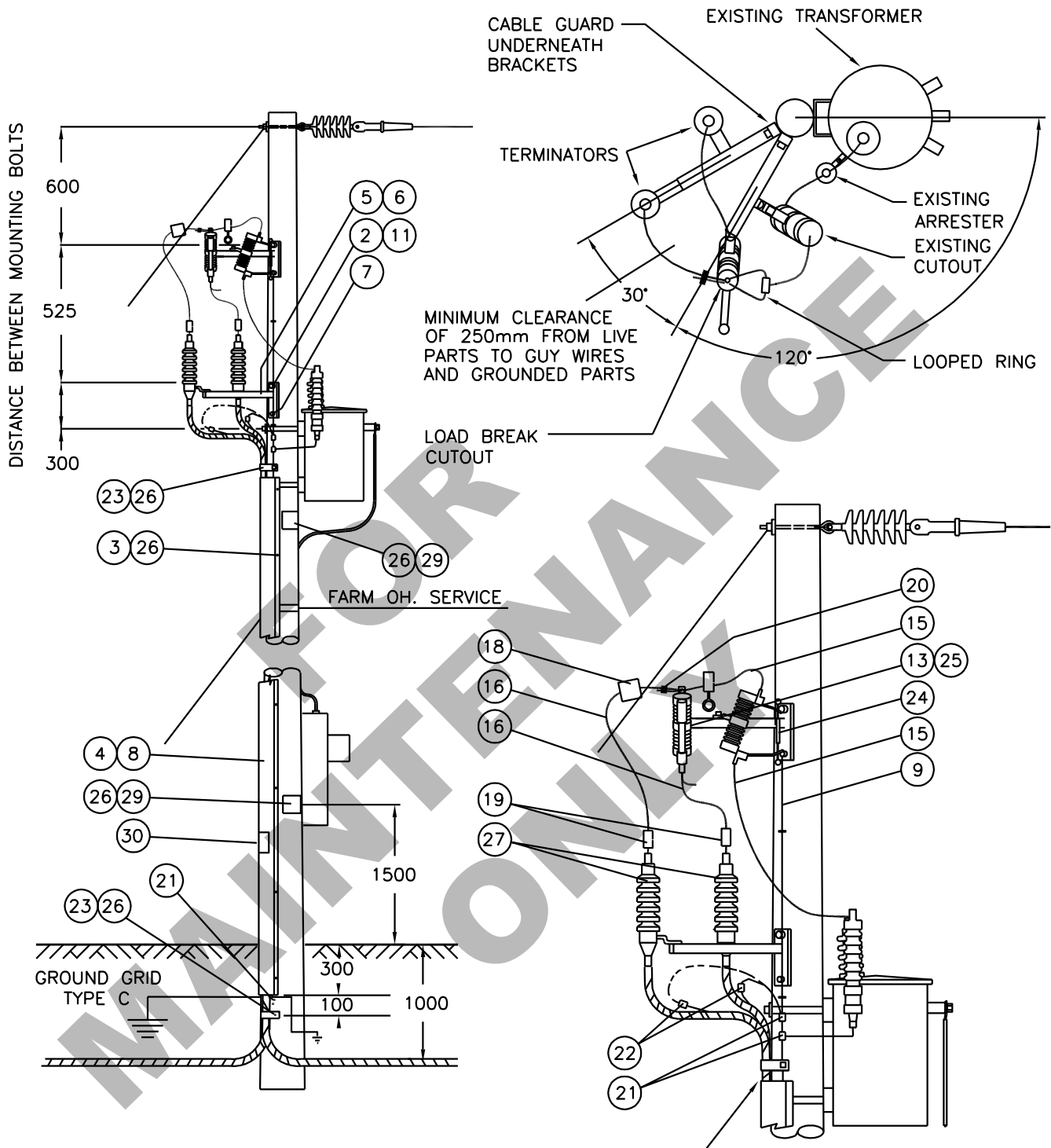
DRN.	M.T.S.	DESIGN CHK.	APPROVAL	RUD SECONDARY TAKE-OFF STRUCTURE
CHKD.				
DATE		DATE	DATE	
DATE OF ISSUE: 2007/04/16		DRAWING NO. B-12-22		SHEET 2 of 2
REV. E				

BILL OF MATERIAL

ITEM NO.	CODE NO.	QUANTITY	DESCRIPTION
1	1-12-02	3	BOLT MACHINE - 1/2" x 2"
2	1-13-12	2	BOLT MACHINE - 5/8" x 12"
3	1-34-09	3	GUARD CABLE PLASTIC - 2 1/2" x 8'
4	1-34-11	1	GUARD CABLE STEEL - 2 1/2" x 8'
5	1-35-36	2	BRACKET RUD - 30"
6	1-35-37	2	GUARD - INSULATING BRACKET
7	1-78-12	2	SCREW LAG - 1/2" x 4 1/2"
8	1-78-38	8	SCREW LAG - 3/8" x 4"
9	1-85-01	1/4 lb	STAPLE FENCE - 1 3/4"
10	1-93-30	2	WASHER ROUND - 9/16"
11	1-93-33	4	WASHER ROUND - 11/16"
12	1-93-42	2	WASHER SQUARE - 2 1/4" x 2 1/4" x 13/16" HOLE
13	2-12-62	1	CUTOUT - LOADBREAK
15	2-83-04	4 m	WIRE CU - #4/7 STR
16	2-84-02	2 m	WIRE CU - #2 SOLID PE JACKET
18	5-06-97	1	FAULT INDICATOR - OVERHEAD 60 AMP TRIP
19	5-11-15	2	INSULINK - ORANGE/ORANGE
20	5-12-01	2	CONNECTOR CU - 2C2
21	5-12-06	3	CONNECTOR CU - 4C4
22	5-12-08	2	CONNECTOR CU - 2C4
23	5-46-18	2	STRAP LEAD
24	7-37-06	X	FUSE - TRIPOLINK 6T
24	7-38-06	X	FUSE - FITALL 6T
25	7-38-00	1	FUSE - SOLID FITALL
26	7-69-64	0.26	SCREW WOOD - #14 x 2 1/2" (100/BOX)
27	8-35-36	2	TERMINATOR - #2 AL
28	71-35-00	2	KIT - CABLE PREPARATION
29	05-640-000	1	SIGN - DANGER HIGH VOLTAGE
30	05-641-535	1	SIGN SELF-ADHESIVE - DANGER UNDERGROUND CABLE
		NOTE:	1. RE-USE THE FOLLOWING: 2-12-XX CUTOUT, 6-02-XX ARRESTER, 2-83-02 #2 CU RISER, 2-02-71 LIVE LINE CLAMP. 2. IF REQUIRED, USE THE FOLLOWING: 6-02-21 ARRESTER

SaskPower - DISTRIBUTION STANDARDS

DRN.	DESIGN CHK.	APPROVAL	RUD LOOP FEED TRANSFORMER WITH CUTOUT
CHKD.			
DATE	DATE	DATE	
DATE OF ISSUE 2007/04/16		DRAWING NO: B-12-23	SHEET 1 OF 2 REV. D



NOTE:

1. REFER TO A-33 FOR GROUND GRID TYPE.
2. REFER TO A-24 FOR FARM METERING.
3. CABLE GUARD AND BRACKETS TO BE GROUNDED.
4. INSTALL DANGER SIGNS IF MISSING.
5. FOR POLE LEAN USE A-32-06 DOWN GUY AND A-32-12 ANCHOR AT THE SHORT GUY DISTANCE.

SCALE: N.T.S. ALL DIMENSIONS ARE IN MILLIMETRES UNLESS OTHERWISE INDICATED

SaskPower – DISTRIBUTION STANDARDS

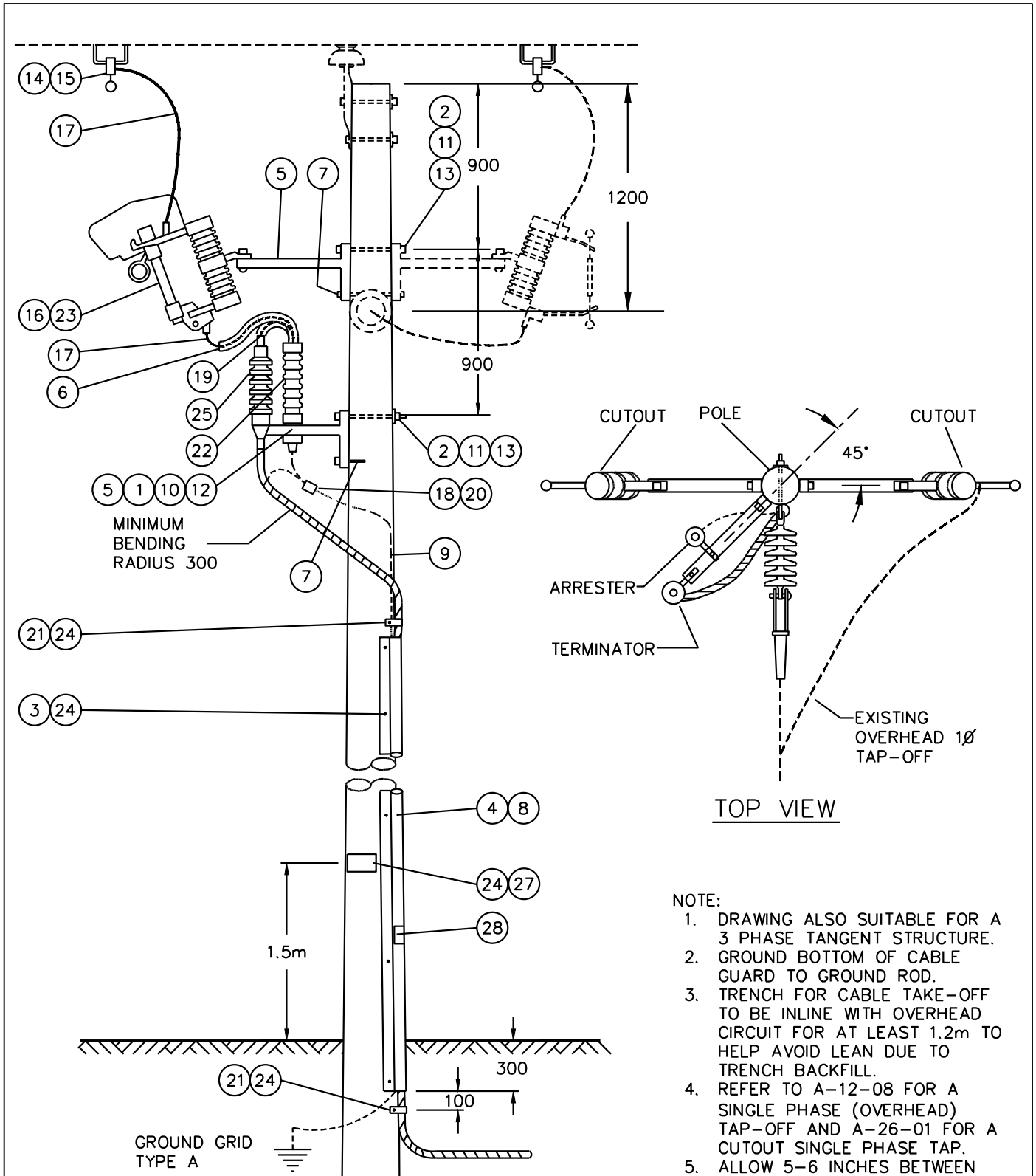
DRN.	M.T.S.	DESIGN CHK.	APPROVAL	RUD LOOP FEED TRANSFORMER WITH CUTOUT
CHKD.				
DATE		DATE	DATE	
DATE OF ISSUE: 2007/04/16		DRAWING NO. B-12-23		SHEET 2 OF 2
				REV. D

BILL OF MATERIAL

ITEM NO.	CODE NO.	QUANTITY	DESCRIPTION
1	1 12 02	2	BOLT MACHINE - 1/2" X 2"
2	1 13 12	2	BOLT MACHINE - 5/8" X 12"
3	1 34 09	3	GUARD CABLE PLASTIC - 2 1/2" x 8'
4	1 34 11	1	GUARD CABLE STEEL - 2 1/2" x 8'
5	1 35 31	2	BRACKET - FOR CUTOUT, ARRESTER, TERMINATOR
6	1 35 38	4 ft	WILDLIFE GUARD - RISER COVER
7	1 78 12	2	SCREW LAG - 1/2" X 4 1/2"
8	1 78 38	6	SCREW LAG - 3/8" x 4"
9	1 85 01	1/4 lb	STAPLE - FENCE - 3/4"
10	1 93 22	2	WASHER LOCK - 1/2"
11	1 93 27	2	WASHER LOCK - 5/8" DOUBLE COIL
12	1 93 30	2	WASHER ROUND - 9/16"
13	1 93 42	2	WASHER SQUARE - 2 1/4" x 2 1/4" x 13/16" HOLE
14	2 02 70	1	CLAMP - LIVELINE
15	2 02 82	1	CLAMP- BAIL - #6 - 1/0 ACSR
16	2 12 62	1	CUTOUT - LOADBREAK - 27 kV 100 AMP
17	2 83 02	3 m	WIRE CU - #2/7 STR
18	2 83 04	8 m	WIRE CU - #4/7 STR
19	5 09 27	1	CONNECTOR - COMPRESSION AL
20	5 12 06	2	CONNECTOR CU - 4C4
21	5 46 18	2	STRAP - LEAD
22	6 02 21	1	ARRESTER-21 KV (RURAL)
23	7 38 XX	1	FUSELINK - FITALL
24	7 69 64	0.28	SCREW WOOD - #14 x 2 1/2" (100/BOX)
25	8 35 36	1	TERMINATOR - #2 AL
26	71 35 00	1	KIT - CABLE PREPARATION
27	5 640 000	1	SIGN DANGER - "HIGH VOLTAGE ZONE"
28	05 641 535	1	SIGN SELF-ADHESIVE - DANGER UNDERGROUND CABLE

SaskPower - DISTRIBUTION STANDARDS

APPROVAL	DESIGN CHK	DRN. LB	SINGLE-PHASE TAKE-OFF STRUCTURE WITH EXISTING OVERHEAD TAP-OFF
L. MOEN	L. BAILEY	CHKD.	
		2015-10-14	
DATE OF ISSUE:	2016/02/05	DRAWING NO:	B-12-25
		SHEET 1 OF 2	REV. F



SCALE: N.T.S.

ALL DIMENSIONS ARE IN MILLIMETRES UNLESS OTHERWISE INDICATED

SaskPower – DISTRIBUTION STANDARDS

APPROVAL L.MOEN	DESIGN CHK. L.BAILEY	DRN. E.GOTANA CHKD. 2015-12-31
DATE OF ISSUE 2016/02/05		DRAWING NO. B-12-25

SINGLE PHASE TAKE-OFF
STRUCTURE WITH EXISTING
OVERHEAD TAP-OFF

SHEET 2 of 2

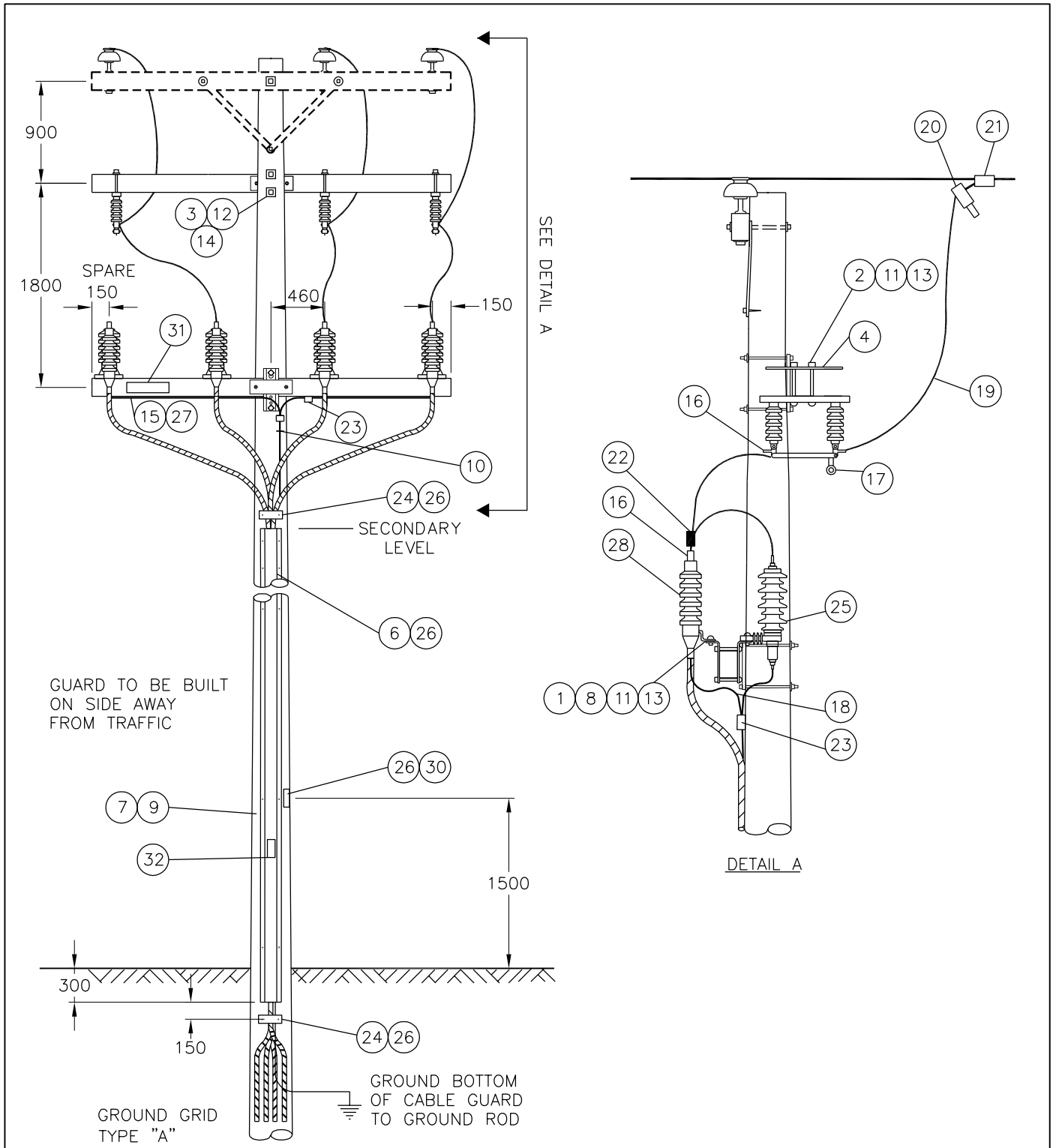
REV. D

BILL OF MATERIAL

ITEM NO.	CODE NO.	QUANTITY	DESCRIPTION
1	1 12 02	8	BOLT – MACHINE – 1/2" x 2"
2	1 12 08	6	BOLT – MACHINE – 1/2" x 8"
3	1 14 12	4	BOLT MACHINE – 3/4" x 12"
4	1 21 31	3	PLATE – ADAPTER
5	1 29 09	2	CROSSARM – 4" x 5" x 10' – COMPOSITE
6	1 34 08	3	GUARD CABLE PLASTIC – 4" x 8'
7	1 34 10	1	GUARD CABLE STEEL – 4" x 8'
8	1 35 32	8	BRACKET – X ARM FOR CUTOUTS, ARRESTERS, OR TERMINATOR
9	1 78 38	6	SCREW – LAG – 3/8" X 4"
10	1 85 01	1/2 lb	STAPLE FENCE – 1 3/4"
11	1 93 22	14	WASHER – LOCK – 1/2"
12	1 93 28	4	WASHER – LOCK – 3/4" DOUBLE COIL
13	1 93 30	14	WASHER ROUND – 9/16" HOLE
14	1 93 42	4	WASHER SQUARE – 2-1/4" x 2-1/4" x 13/16" HOLE
15	1 94 15	4	CLIP – GROUND WIRE – COPPER
16	2 65 87	10	HYLUG – 4/0 STR AL & CU
17	2 71 76	3	DISCONNECT SOLID BLADE – 25 kV 600 AMP
18	2 83 04	16 m	WIRE CU – #4/7 STR
19	2 98 01	11 m	WIRE CU – #4/0 BARE 19 STRANDS
20	5 06 97	3	O/H FAULT INDICATOR
21	5 09 48	3	CONNECTOR AL – CRIMPIT 503
22	5 12 02	4	COPPER – CRIMPIT
23	5 12 06	8	CONNECTOR CU – 4C4
24	5 46 18	2	STRAP LEAD
25	6 02 21	4	ARRESTER – 21 kV RURAL HEAVY DUTY
26	7 69 64	0.38	WOOD SCREW – #14 – 2 1/2" ROUND ROBERTSON
27	7 69 65	4	SCREW – SELF DRILLING – 1/4" x 1"
28	8 35 XX	4	TERMINATOR – CABLE
29	71 35 00	4	CABLE PREPARATION KIT
30	5 640 000	1	SIGN – DANGER
31	5 641 025	1	DECAL – DANGER 25000 VOLTS
32	5 646 582	1	DECAL – WATCH FOR WIRES

SaskPower - DISTRIBUTION STANDARDS

APPROVAL	DESIGN CHK	DRN. LM	RURAL 3Ø, SOLID BLADE DISCONNECT SINGLE-CIRCUIT REVERSE TAKE-OFF STRUCTURE WITH SPARE CONDUCTOR
L MOEN	A. UHREN	CHKD.	
		2017-07-14	
DATE OF ISSUE:	2017/08/31	DRAWING NO:	B-12-36
		SHEET	1 OF 2
		REV.	0



NOTES:

1. RURAL MINIMUM 12.2m (40') POLES. RURAL RADIALS ONLY.
2. LOAD SIDE STRUCTURE. SPARE CABLE TO BE CONNECTED SOURCE SIDE ONLY.
3. WARNING: SPARE CABLE IS NORMALLY ENERGIZED.
4. TRENCH FOR CABLE TAKE-OFF TO BE IN LINE WITH OH CIRCUIT FOR AT LEAST 1.2 METERS TO HELP AVOID POLE LEAN DUE TO TRENCH BACKFILL
5. ALL DIMENSIONS ARE IN mm UNLESS OTHERWISE STATED.
6. SCALE: N.T.S.

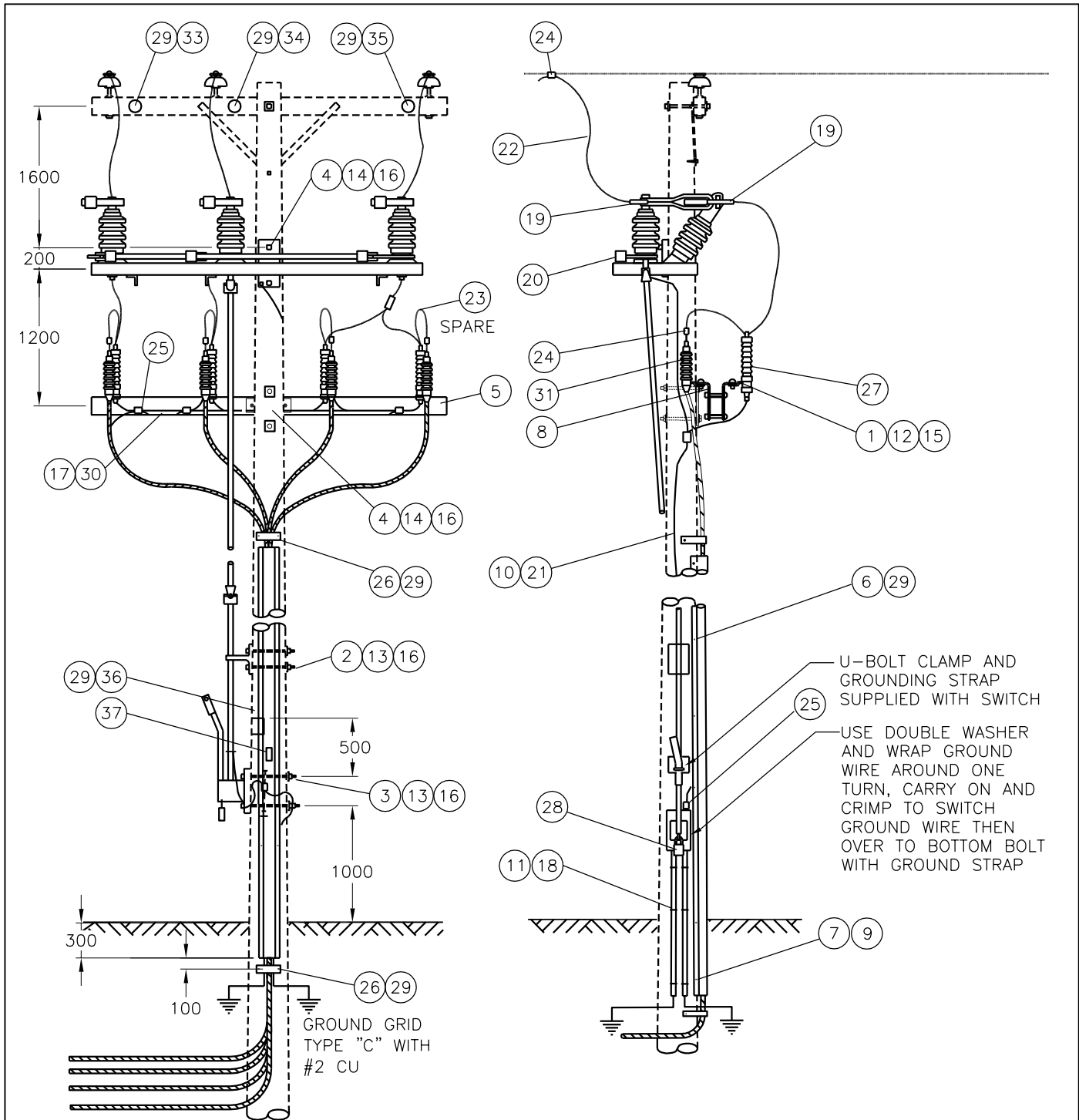
SaskPower – DISTRIBUTION STANDARDS			
APPROVAL L.MOEN	DESIGN CHK. L.MOEN	DRN. D.REDEKOPP CHKD. 2017-08-21	RURAL 3Ø, SOLID BLADE DISCONNECT SINGLE-CIRCUIT REVERSE TAKE-OFF WITH SPARE CONDUCTOR
DATE OF ISSUE	2017/08/31	DRAWING NO. B-12-36	
		SHEET 2 of 2	REV.

BILL OF MATERIAL

ITEM NO.	CODE NO.	QUANTITY	DESCRIPTION
1	1 12 02	8	BOLT MACHINE – 1/2” x 2”
2	1 13 14	2	BOLT MACHINE – 5/8” x 14”
3	1 13 16	2	BOLT MACHINE – 5/8” x 16”
4	1 14 12	4	BOLT MACHINE – 3/4” x 12”
5	1 29 09	1	CROSSARM – 4” x 5” x 10’ – COMPOSITE
6	1 34 08	3	GUARD CABLE PLASTIC – 4” x 8’
7	1 34 10	1	GUARD CABLE STEEL – 4” x 8’
8	1 35 32	8	BRACKET CROSSARM
9	1 78 38	10	SCREW LAG – 3/8” X 4”
10	1 85 01	0.25 LB	STAPLE FENCE – 1 3/4”
11	1 85 02	20	STAPLE MOULDING
12	1 93 22	8	WASHER LOCK – 1/2”
13	1 93 27	4	WASHER LOCK DOUBLE COIL – 5/8”
14	1 93 28	4	WASHER LOCK DOUBLE COIL – 3/4”
15	1 93 30	8	WASHER ROUND – 9/16” HOLE
16	1 93 42	8	WASHER SQUARE – 2 1/4” x 2 1/4” x 13/16” HOLE
17	1 94 15	4	CLIP – GROUND WIRE – COPPER
18	2 27 00	3	MOULDING GROUND WIRE
19	2 65 XX	9	HYLUG (SEE NOTE 1)
20	2 69 45	1	SWITCH GOPT – 25 kV 600 A LOAD BREAK
21	2 83 02	13 m	WIRE CU – #2/7 STR
22	2 98 01	11 m	WIRE CU – 4/0 – 19 STR
23	5 06 97	4	O/H FAULT INDICATOR
24	5 09 2X	4	CONNECTOR AL – CRIMPIT (SEE NOTE 1)
25	5 12 01	4	CONNECTOR CU – 2C2
26	5 46 18	2	STRAP LEAD
27	6 02 21	4	ARRESTER – 21 kV RURAL HEAVY DUTY
28	7 66 00	1	PADLOCK
29	7 69 64	0.41	SCREW WOOD – #14 x 2 1/2” (BOX)
30	7 69 65	4	SCREW – SELF DRILLING – 1/4” x 1”
31	8 35 XX	4	TERMINATOR CABLE
32	71 35 00	4	KIT – CABLE PREPARATION
33	05 116 362	1	DISC PHASE MARKING BLUE
34	05 116 366	1	DISC PHASE MARKING RED

SaskPower - DISTRIBUTION STANDARDS

APPROVAL	DESIGN CHK	DRN. LM	RURAL 3Ø GOPT TAKE-OFF STRUCTURE WITH SPARE CONDUCTOR
L. MOEN	A. UHREN	CHKD.	
		2017-07-18	
DATE OF ISSUE:	2017/08/31	DRAWING NO: B-12-37	SHEET 1 OF 3 REV. 0



NOTES:

1. LOCATION OF GROUND GRID IS DEPENDANT ON LOCATION OF SWITCH HANDLE AND DRIVE BAR.
2. ALWAYS INSTALL WITH SWITCH HANDLE UP. FOR ROTATION TYPE HANDLE MOVEMENT, MOUNT AT HEIGHT SHOWN. FOR PULL DOWN TYPE, MOUNT SO THAT THE HANDLE CLEARS THE GROUND AND IS NOT TOO HIGH WHEN UP.
3. REFER TO SECTION A-33 FOR GROUNDING DETAILS AND GROUND GRID TYPE "C".
4. TRENCH FOR CABLE TAKE-OFF TO BE INLINE WITH OVERHEAD CIRCUIT FOR AT LEAST 1.2m TO HELP AVOID LEAN DUE TO TRENCH BACKFILL.
5. RURAL MINIMUM 12.2m (40') POLES. RURAL RADIALS ONLY.
6. NO JOINT USE TAKEOFFS OR SECONDARY TAKEOFFS ARE ALLOWED ON THIS STRUCTURE DUE TO CONGESTION ON THE POLE AND POSSIBLE DAMAGE TO GROUND GRID.
7. SOURCE SIDE STRUCTURE. SPARE CABLE CONNECTED THIS SIDE ONLY.
8. ALL DIMENSIONS ARE IN MILLIMETERS UNLESS OTHERWISE STATED.

SaskPower – DISTRIBUTION STANDARDS			
APPROVAL L.MOEN	DESIGN CHK. L.MOEN	DRN. D.REDEKOPP CHKD. 2017-08-21	RURAL 3Ø GOPT TAKE-OFF STRUCTURE WITH SPARE CONDUCTOR
DATE OF ISSUE	2017/08/31	DRAWING NO. B-12-37	SHEET 2 of 3
			REV.

BILL OF MATERIAL

ITEM NO.	CODE NO.	QUANTITY	DESCRIPTION
35	05 116 368	1	DISC PHASE MARKING YELLOW
36	05 640 000	1	SIGN "DANGER-HIGH VOLTAGE"
37	05 646 582	1	DECAL – WATCH FOR WIRES
			<p>NOTE:</p> <p>1. REFER TO SECTION A-36 FOR SPECIFIC MATERIAL REQUIREMENTS.</p>

SaskPower - DISTRIBUTION STANDARDS

APPROVAL L. MOEN	DESIGN CHK A. UHREN	DRN. LM CHKD. 2017-07-18	<p align="center">RURAL 3Ø GOPT TAKE-OFF STRUCTURE WITH SPARE CONDUCTOR</p>
DATE OF ISSUE: 2017/08/31	DRAWING NO: B-12-37		